

PLUMBING

A

Arrestors, Water	544
Automatic Faucet Controls.....	494

B

Baskets	
Pre-rinse	482
Sink	487
Beer	
Faucets	537
Tap Lock.....	537
Tower	537

C

Cartridges	
Replacement Filter	553-562
Fountain System	558, 560
Clamps	552
Clean-out Bodies	486
Compound, Pipe Joint.....	549
Cover, Pipe	503
Cylinder, Foot Valve	548

D

Dipperwells and Accessories	534, 536
Disconnects, Slotted-type	536

Disposers

Garbage.....	483
Strainer	483

Drains

Assemblies	481
Baskets (Sink).....	480-481
Blaster®	549
Flat Strainer.....	480
Funnels	482
Grate (Floor).....	484-485
Lock Nuts	481
Spin and Seal.....	480
Stoppers	481
Strainers (Floor)	485, 487
Tailpieces	476
Trays	541
Uncloggers	549
Washers	481

Drip Pan Strips	487, 536
-----------------------	----------

E

Emergency Eye Wash Stations.....	494
----------------------------------	-----

F

Faucet Parts.....	503-514
Faucets	
Automatic.....	494
Beer	537
Deck Mount.....	489, 496-498
Dipperwell	534, 536
Double-jointed	500

Drinking Fountain.....	540
Glass Filler and Accessories	542-543
Inlet	502
Lab Sink.....	493
Lavatory.....	496-497
Multi-purpose.....	488
Pantry.....	498
Pot Filler & Kettle.....	499
Service Sink	492
Specialty.....	502, 540
Steam Jacketed Kettle	502
Steam Table.....	502
Stock Pot.....	502
Tomlinson	538-539
Wall Mount	490-491, 495
Wok Range	501
Fillers, Pot and Kettle.....	499
Filters, Water.....	553-562
Floor Drain Grate Hinged	484
Floor	
Drains.....	487
Sink Baskets	487
Sinks	486
Fountain Draft Arms	537

G

Garbage Disposers	483
Gauge Glass and Parts	540
Glass Fillers and Accessories.....	542-543
Grease Interceptors	483

H

Hand/Nail Cleaning System	493
Hand Sink.....	493
Handles, Toilet Flush.....	546
Hose	
Carrier/Holder	550
Clamps	552
Rack	550
Reels.....	520
Spray Nozzles.....	550-551
Hoses	551

O

Overflow	
Head and Elbow.....	474, 476
Tubes	482, 534
Oil/Grease Absorbent.....	485

P

Pipe Cover, Pro-Extreme™.....	503
Pipe Joint Compound.....	549
Plungers.....	549
Pre-rinse	
Baskets	482
Parts	521-533

Pre-rinses

Deck Mount.....	516-517
Wall Mount	518-519

Putty

549

R

Reducer	576
---------------	-----

S

Scale Removers, Scale Kleen™.....	561
Scale Sticks™.....	556
Screwdriver	484
Sink	
Baskets/Strainers	480-481
Hand.....	493
Stoppers	481
Sloan Valves and Parts	546-547
Spray Nozzles.....	550-551
Stoppers	481
Strainers	
Floor Drain.....	485, 487
Garbage Disposer.....	483
In-line.....	561

T

Tailpiece Assemblies.....	476
Teflon® Tape/Packing	550
Thermostatic Mixing Valves	494, 544
Toilet Flapper.....	546
Tomlinson Faucets and Parts.....	538-539
Trap Primer	544
Trays, Drain	541
Tubes, Overflow.....	482, 534
Tubing	
Fittings	552
Vinyl.....	552

U

Utility Sprays	520
----------------------	-----

V

Vacuum Breakers	492
Valves.....	544-545
Valve, Water Control.....	502

W

Waste	
Lever/Twist.....	474-475, 478-479
Repair Kits	476
Tool, Lever/Twist	476
Wastes and Parts	474-479
Water	
Filters.....	553-562
Stations.....	541

Attention California and Vermont Residents:

Effective January 1, 2010, only plumbing products that comply with California or Vermont laws may be sold into those states. We carry a full line of compliant products. Please call us to discuss your specific needs.

FRANKLIN MACHINE PRODUCTS WASTES

*This convenient universal body provides both 1½" NPS female and 2" NPS male drain outlet connections.
Can instantly convert to an overflow assembly, eliminating double inventories.*



WASTES

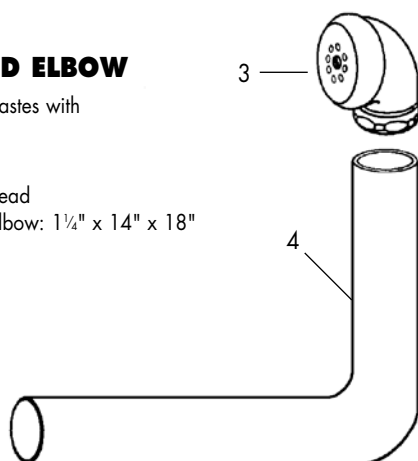
- 3½" sink opening with 4⅞" flange
- 2" NPS male connection and 1½" NPS female connection
- Can be used with or without 1¼" overflow head and elbow
- Stainless steel drain, flange, and handle
- Nickel-plated die-cast body

1. **No. 100-2005** Twist waste
2. **No. 100-2006** Lever waste

OVERFLOW HEAD AND ELBOW

- Designed to fit lever and twist wastes with 1¼" overflow outlets
- Easy to cut to size

3. **No. 100-1024** Overflow head
4. **No. 100-1021** Overflow elbow: 1¼" x 14" x 18"



Are you LOST?



Each section begins with its own index.

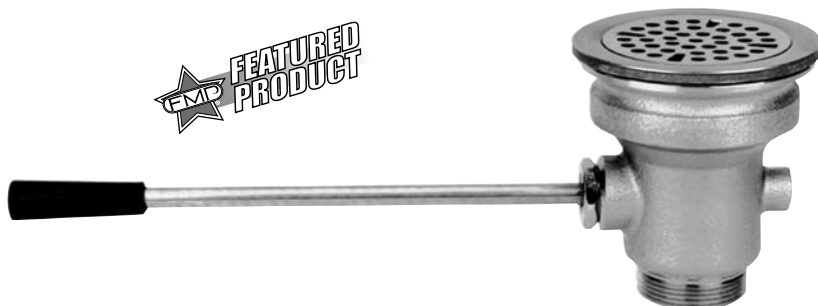
Also, using the directory in the front or one of our cross-references in the back should help you find what you need.

FRANKLIN MACHINE PRODUCTS WASTES

LEVER WASTES

- Stainless steel strainer, flange, and handle
- Nickel-plated bronze body

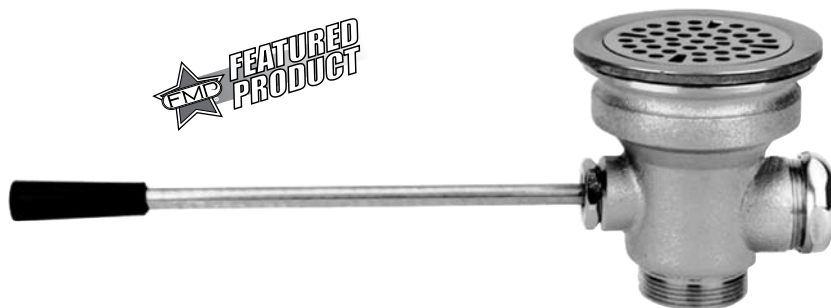
ITEM No.	SINK OPENING	DRAIN OUTLET	FLANGE DIA.
100-1000	3"	1½" NPS	4⅛"
100-1034	3"	2" NPS	4⅛"
100-1012	3½"	1½" NPS	4⅜"
100-1035	3½"	2" NPS	4⅜"



LEVER WASTES WITH 1¼" OVERFLOW OUTLET

- Stainless steel strainer, flange, and handle
- Nickel-plated bronze body

ITEM No.	SINK OPENING	DRAIN OUTLET	FLANGE DIA.
100-1017	3"	1½" NPS	4⅛"
100-1036	3"	2" NPS	4⅛"
100-1018	3½"	1½" NPS	4⅜"
100-1037	3½"	2" NPS	4⅜"



TWIST WASTES

- Stainless steel strainer, flange, and handle
- Nickel-plated bronze body

ITEM No.	SINK OPENING	DRAIN OUTLET	FLANGE DIA.
100-1026	3"	1½" NPS	4⅛"
100-1038	3"	2" NPS	4⅛"
100-1031	3½"	1½" NPS	4⅜"
100-1039	3½"	2" NPS	4⅜"



TWIST WASTES WITH 1¼" OVERFLOW OUTLET

- Stainless steel strainer, flange, and handle
- Nickel-plated bronze body

ITEM No.	SINK OPENING	DRAIN OUTLET	FLANGE DIA.
100-1032	3"	1½" NPS	4⅛"
100-1040	3"	2" NPS	4⅛"
100-1033	3½"	1½" NPS	4⅜"
100-1041	3½"	2" NPS	4⅜"



PARTS & ACCESSORIES FOR WASTES



TAILPIECE ASSEMBLIES

- Includes coupling nut and washer

ITEM No.	FITS DRAIN SIZE	HEIGHT
BRASS		
102-1074	1" NPS	2"
102-1076	1½" NPS	4"
102-1078	2" NPS	4"
NICKEL-PLATED BRASS		
102-1075	1" NPS	2"
102-1077	1½" NPS	4"
102-1079	2" NPS	4"



REDUCER

Eliminates stocking 2 sizes of lever wastes.

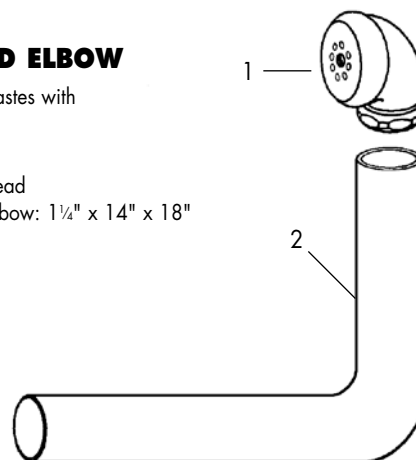
No. 100-1042

- 2" NPT female x 1½" NPT male
- Nickel-plated brass

OVERFLOW HEAD AND ELBOW

- Designed to fit lever and twist wastes with 1¼" overflow outlets
- Easy to cut to size

1. **No. 100-1024** Overflow head
2. **No. 100-1021** Overflow elbow: 1¼" x 14" x 18"



WASTE REPAIR KIT

Contains common replacement parts for all Franklin Machine Products, Barnett Premier, Chicago, Component Hardware Group, Standard Keil, and T&S Brass wastes.

No. 100-1011

- Kit includes: One of each: 3" and 3½" flange washers, Body bushing, Packing nut bushing, Plunger O-ring, Coupling nut washer, Handle O-ring, Twist handle snap rings, Washer

Note: Cannot be used on old style 3976 and 3979 series lever wastes (see No. 100-1050).

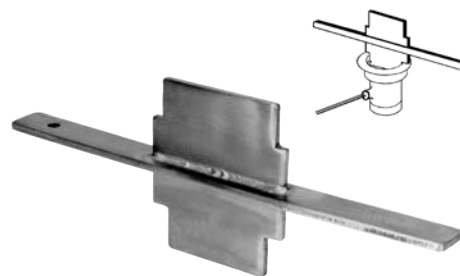


WASTE REPAIR KIT FOR OLD STYLE LEVER WASTES

Contains common replacement parts for Franklin Machine Products old style 3976 and 3979 series lever wastes.

No. 100-1050

- Kit includes: One of each: flange washer, Coupling nut washer, Body bushing, Packing nut bushing, O-ring



LEVER/TWIST WASTE TOOL

Heavy-duty tool for removing or installing lever and twist wastes with 2¾" or 3½" slots. Works for both 3" and 3½" sink openings.

No. 142-1113

- Stainless steel

Note: Cannot be used on T&S Brass twist and lever wastes.

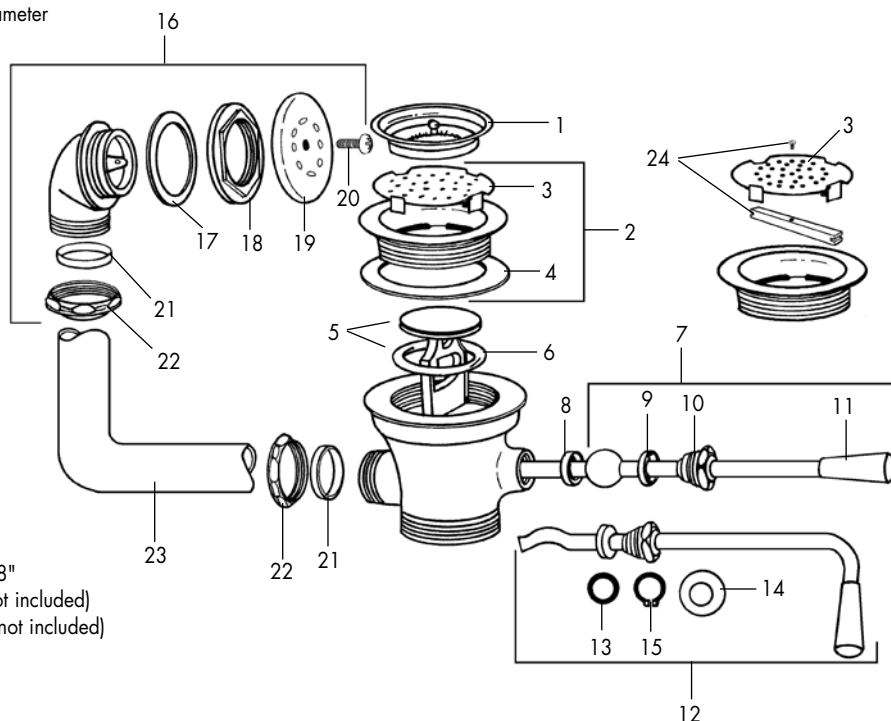
PARTS FOR LEVER & TWIST HANDLE WASTES

PARTS FOR WASTES

REF

No. ITEM No. DESCRIPTION

- | | | |
|----|-----------------|---|
| 1 | 100-1014 | Crumb cup strainer: 3½" sink opening only |
| 2 | 100-1010 | Flange assembly: 3" sink opening, 4⅞" OD |
| 2 | 100-1016 | Flange assembly: 3½" sink opening, 4⅞" OD |
| 3 | 100-1005 | Strainer: 3" sink opening, 3⅞" diameter |
| 3 | 100-1013 | Strainer: 3½" sink opening, 3⅞" diameter |
| 4 | 100-1006 | Washer: 3" sink opening |
| 4 | 100-1015 | Washer: 3½" sink opening |
| 5 | 100-1004 | Plunger with O-ring |
| 6 | 100-1002 | O-ring |
| 7 | 100-1007 | Lever rod |
| 8 | 100-1009 | Body bushing |
| 9 | 100-1001 | Packing nut bushing |
| 10 | 100-1008 | Packing nut |
| 11 | 100-1003 | Plastic handle knob |
| 12 | 100-1027 | Twist handle |
| 13 | 100-1028 | O-ring |
| 14 | 100-1030 | Washer |
| 15 | 100-1029 | Snap ring |
| 16 | 100-1024 | Overflow head assembly |
| 17 | 102-1026 | Overflow washer |
| 18 | 102-1021 | Overflow flanged lock nut |
| 19 | 100-1023 | Overflow strainer |
| 20 | 100-1025 | Strainer mounting screw |
| 21 | 100-1019 | Coupling nut washer |
| 22 | 100-1020 | Coupling nut |
| 23 | 100-1021 | Overflow elbow: 1½" OD x 14" x 18" |
| 24 | 100-1053 | Strainer lock for 3" waste (strainer not included) |
| 24 | 100-1054 | Strainer lock for 3½" waste (strainer not included) |



Parts for Lever and Twist Handle Wastes

For use on Franklin Machine Products,
Component Hardware Group,
and Standard Keil wastes.

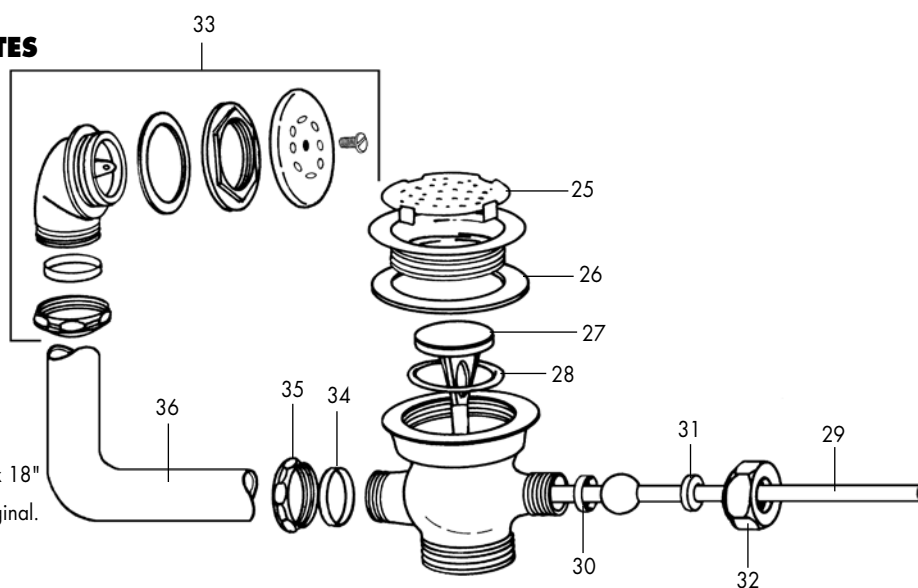
PARTS FOR OLD STYLE FRANKLIN MACHINE PRODUCTS LEVER WASTES MODELS 3976, 3979

REF

No. ITEM No. DESCRIPTION

- | | | |
|----|------------------|------------------------------------|
| 25 | 100-1046 | Flat strainer: 3¼" diameter |
| 26 | 100-1006 | Flange washer |
| 27 | 100-1045 | Plunger only |
| 28 | 100-1044 | O-ring |
| 29 | 100-1047 | Lever rod with ball |
| 30 | 100-1049 | Body bushing |
| 31 | 100-1043 | Packing nut bushing |
| 32 | 100-1048 | Packing nut |
| 33 | 100-1024* | Overflow head assembly |
| 34 | 100-1019 | Coupling nut washer |
| 35 | 100-1020 | Coupling nut |
| 36 | 100-1021 | Overflow elbow: 1½" OD x 14" x 18" |

*Overflow head pictured is a replacement for the original.



TWIST FLOW™ ROTARY WASTES



TWIST FLOW™ ROTARY WASTES

- Ideal for 3 compartment pot and soak sinks
- Stainless steel crumb cup locks into place
- Heavy-duty rotary handle
- Teflon® seals for efficiency
- 3½" to 4" sink opening with 4⅝" flange
- 2" NPS external connection, 1½" NPT internal connection
- Can be used with or without 1¼" overflow head and elbow

1. **No. 100-2000** 316 stainless steel
2. **No. 100-2002** Nickel-plated brass

REPLACEMENT SINK BASKETS

- Fits 3½" sink opening

No. 100-2003 300 series stainless steel

No. 102-1129 Tamperproof twist-lock



Replacement Handles are available. Call for details.

TWIST FLOW™ ROTARY WASTE

Economical Plastic Rotary Waste

No. 100-2001

- Crumb cup locks into place
- 12" rotary handle
- Fits standard 3½" sink opening
- 2" NPS external connection
- Solid plastic

REPLACEMENT SINK BASKET

No. 100-2003 300 series stainless steel



Overflow Kit and Replacement Handle are available. Call for details.

DRAIN KING TWIST WASTES by FISHER

TWIST WASTES

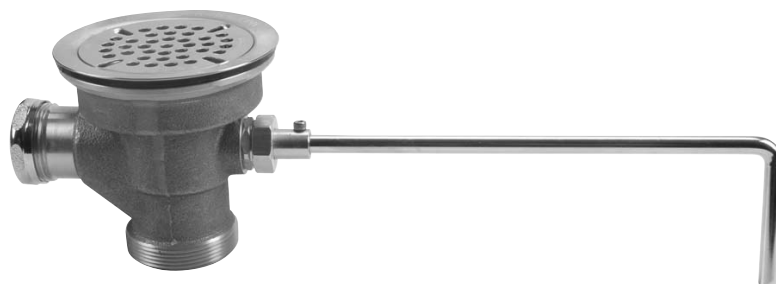
- "Clear Through" opening—no need to disassemble if snaking is required
- ¼ turn fully opens and closes valve
- Fits 3½" sink openings
- Supplied with alternate slip joint nut and washer
- 2" NPT male and 1½" female outlet
- Cast red brass
- Stainless steel ball and flat strainer
- Dual Teflon® seals

No. 112-1038 1½" overflow outlet

• Fisher no. 22438

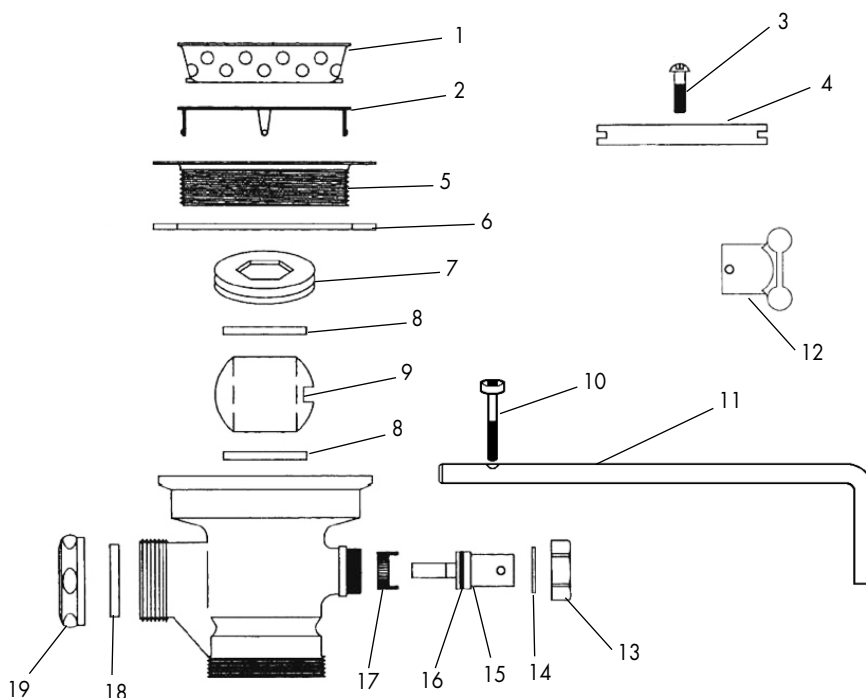
No. 112-1040 Without overflow outlet
(not shown)

• Fisher no. 22209



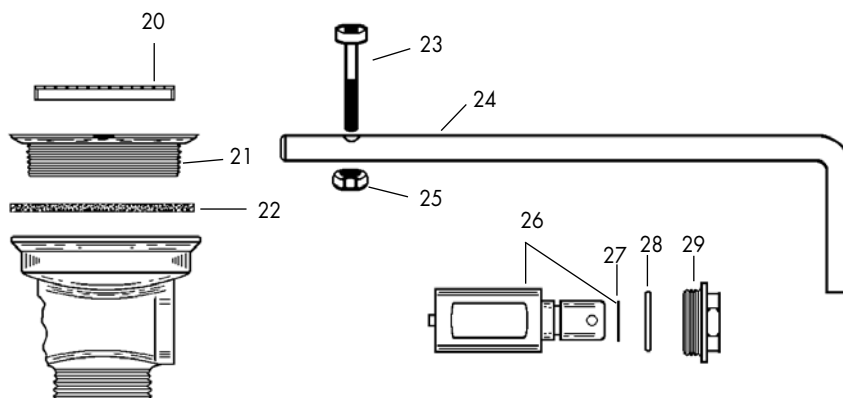
PARTS FOR DRAIN KING TWIST WASTES

REF No.	ITEM No.	DESCRIPTION
—	113-1110	End cap (not shown)
—	113-1104	End cap gasket (not shown)
1	113-1106	Basket strainer
2	113-1101	Flat strainer
3	113-1109	Vandal resistant screw
4	113-1108	Vandal resistant bar
5	113-1100	Clamping ring
6	113-1070	Clamping ring gasket
7	113-1099	Waste valve retaining nut
8	113-1097	Teflon® seal
9	113-1098	Waste ball valve
10	113-1102	Screw
11	113-1077	Lever handle
12	113-1103	Vandal resistant knob
13	113-1092	Rotor nut
14	113-1093	Washer
15	113-1094	Rotor arm
16	113-1095	O-ring
17	113-1096	Rotor stop
18	113-1105	Slip joint washer
19	113-1107	Slip joint nut



PARTS FOR OLD STYLE ROTARY TWIST WASTES by FISHER

REF No.	ITEM No.	DESCRIPTION
20	113-1072	Strainer
21	113-1067	Flange
22	113-1070	Washer
23	113-1078	Handle screw
24	113-1077	Handle only
25	113-1079	Handle nut
26	113-1068	Rotor and O-ring
27	113-1071	O-ring
28	113-1069	Washer
29	113-1066	Nut



DRAINS & SINK BASKETS



FLAT STRAINER DRAIN

No. 102-1068

- Fits 3", 3½" or 4" sink openings
- 1½" NPS outlet
- 4½" top diameter
- 2" high
- Stainless steel



FREE FLOW DRAIN

No. 102-1096

- Fits 3½" sink opening
- 2" NPS
- 4½" top diameter
- 2¾" high
- Cast brass with stainless steel top



HEAVY-DUTY WASTE STYLE DRAIN

No. 100-1056

- Fits 3" sink opening
- 2" NPS outlet
- Nickel-plated bronze body
- Stainless steel strainer and flange
- Stainless steel threaded clean-out plug



SPIN AND SEAL DRAIN

Sink basket screws into drain, providing a better seal when closed and better straining when open.

No. 102-1067

- Fits 3½" sink opening
- 1½" NPS outlet
- 4½" top diameter
- Stainless steel

No. 102-1113 Replacement sink basket



BASKET SINK DRAINS

- Fits 3½" sink opening
- 1½" NPS outlet
- 4½" top diameter
- Drain body and sink basket are stainless steel

No. 102-1097 Stainless steel

No. 102-1064 300 series stainless steel



1



2

UNIVERSAL REPLACEMENT SINK BASKETS

- Fits most 3½" basket sink drains
- Stainless steel

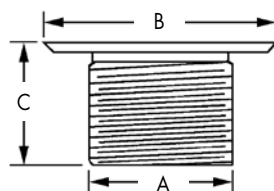
1. **No. 102-1062** With movable metal post
2. **No. 102-1063** With fixed plastic post

HEAVY CAST DRAIN ASSEMBLIES

- Includes lock nut and washer

ITEM No.	A DRAIN SIZE	B FLANGE	C LENGTH
1. BRASS			
102-1000	½" NPS	1½"	2"
102-1004	1" NPS	2"	1½"
102-1007	1" NPS	2"	3¼"
102-1009	1" NPS	2"	4"
102-1011	1½" NPS	3"	1½"
102-1014	1½" NPS	3"	3"
1. NICKEL-PLATED BRASS			
102-1001	½" NPS	1½"	2"
102-1003*	¾" NPS	1½"	1¾"
102-1005	1" NPS	2"	1½"
102-1008	1" NPS	2"	3¼"
102-1010	1" NPS	2"	4"
102-1012	1½" NPS	3"	1½"
102-1015	1½" NPS	3"	3"
102-1017	2" NPS	3¾"	2"
2. STAINLESS STEEL			
102-1065	1½" NPS	2¾"	1¾"

* Lock nut and washer not included



"A" dimension is referred to as drain size.
Actual OD is approximately ¼" larger.



STOPPERS

ITEM No.	FITS DRAIN SIZE	MATERIAL
102-1039	1" NPS	Rubber
102-1040	1" NPS	Brass
102-1041	1" NPS	Nickel-plated brass
102-1043	1¼" NPS	Rubber
102-1044	1½" NPS	Rubber
102-1045	1½" NPS	Nickel-plated brass
102-1047	1½" to 2" NPS	Rubber

DRAIN LOCK NUTS

No. 102-1018	½" NPS
No. 102-1019	¾" NPS
No. 102-1020	1" NPS
No. 102-1021	1½" NPS
No. 102-1022	2" NPS



DRAIN WASHERS

No. 102-1023	½" NPS
No. 102-1115	¾" NPS
No. 102-1025	1" NPS
No. 102-1026	1½" NPS
No. 102-1027	2" NPS



REPLACEMENT SINK BASKET

No. 102-1028

- Fits 1½" NPS drains
- 1½" OD x ¾" D
- Stainless steel



SINK BASKET

No. 102-1066

- Fits drains with 1¾" inside diameter
- Stainless steel
- Rubber seat material



DRAIN AND BASKET

No. 102-1130

- Fits 1½" sink opening
- 1½" NPS
- 2¼" top diameter
- Stainless steel

No. 102-1066 Replacement sink basket



PRE-RINSE BASKETS

- Fits standard 20" x 20" (508mm x 508mm) pre-rinse sink
- Stainless steel

No. 102-1125 2¼" (57mm) deep

No. 102-1151 4" (102mm) deep

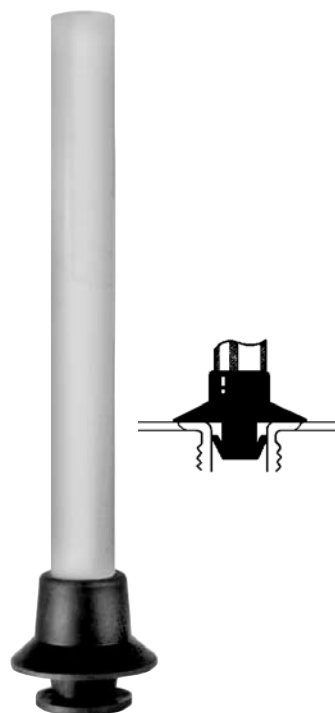


OVERFLOW TUBES

- Durable
- Fits drains with 1" ID
- Rubber seat

ITEM No.	MATERIAL	HEIGHT
1. 102-1030	Plastic	7½"
2. 102-1031	Nickel-plated brass	7½"
2. 102-1032	Nickel-plated brass	9"
3. 102-1072*	Nickel-plated brass	12"

*Fits drains with 1¾" inside diameter



SPECIALTY OVERFLOW TUBES

Unique dual rubber seals provide a positive seal when placed in a drain. Extra-wide top seal stabilizes the tube. Durable white plastic.

No. 102-1070 Fits drains with 1" to 1½" ID
• 7½" high

No. 102-1071 Fits drains with 1½" to 1¾" ID
• 10" high



4



5

DRAIN FUNNELS WITH STRAINERS

- Strainer prevents waste from clogging drain
- Funnel helps keep rinse water clean

4. **No. 102-1116** Aluminum
• 7" across top x 6" high

5. **No. 102-1069** Plastic
• 7" across top x 8" high

GREASE TRAPS

GREASE INTERCEPTORS by DORMONT®

Minimize plumbing repairs by eliminating product build-up in your pipes. Interceptors trap greasy substances and prevent them from entering plumbing systems.



- External cast iron flow restrictor
- Removable baffle assembly
- PDI certified
- Steel cover with gasket
- Epoxy-coated steel housing

ITEM No.	GREASE CAPACITY	FLOW RATE	DESCRIPTION	DORMONT No.
400-5014	40 lb	20 GPM	24" L x 15¾" W x 15" H (610mm x 400mm x 381mm)	WD20
400-5015	50 lb	25 GPM	26" L x 16½" W x 16½" H (660mm x 419mm x 419mm)	WD25
400-5016	70 lb	35 GPM	30" L x 18" W x 19" H (762mm x 457mm x 483mm)	WD35

GARBAGE DISPOSERS

BUSBOY® GARBAGE DISPOSERS by NEMCO®



Built to work in the toughest foodservice environments. Sealed shafts prevent motor damage, non-corrosive parts virtually eliminate chance of sudden breakdown, and oversized grinding tables improve speed and reduce motor strain for faster, more efficient grinding.

No. 400-1021 For intermediate volume operations

- 120/240 volt
- Single phase
- 1 horsepower

No. 400-1022 For large volume operations

- 208-220/440 volt
- 3 phase
- 2 horsepower

No. 400-1023 For large volume operations with heavy loads

- 208-220/440 volt
- 3 phase
- 3 horsepower



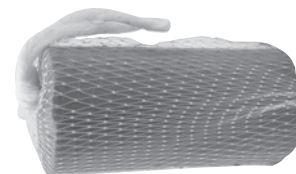
**A Proud NAFEM
Member For
Over 25 Years.**



GARBAGE DISPOSER STRAINER

No. 102-1134

- Prevents unwanted items from passing through while allowing liquid to flow
- Fits 18" diameter cone opening
- Includes 4 feet for stabilization
- Black plastic



TRAP-SAK GREASE TRAP TREATMENTS

This treatment dissolves slowly while continuously releasing fat and food digesting Roe-Tech Bacteria to help degrade food residue. It's safe for all plumbing, and ends back-ups and overflows.

- Contains surfactant and odor neutralizing fragrance
- Reduces FOG (Fats, Oil, and Grease)

No. 143-1105 2 lb (1kg)

No. 143-1106 5 lb (2.3kg)

HINGED FLOOR DRAIN GRATES

Eliminate the cost and danger associated with loose or missing floor drain grates.



FRANKLIN HINGED FLOOR DRAIN GRATES™ for SMITH FLOOR DRAINS

Unique hinged design allows for easy access drain cleaning. Tamperproof screws prevent grates from being removed and misplaced.

ROUND DRAINS

- Reinforced $\frac{5}{32}$ " nickel-bronze for added strength and durability
- Includes 1 tamperproof screw and 1 Phillips head screw

ITEM No.	DRAIN SIZE	OUTSIDE DIA.	SCREW CTRS.
102-1152	5"	4 $\frac{5}{8}$ "	4"
102-1153	6"	5 $\frac{3}{8}$ "	4 $\frac{1}{2}$ "

REPLACEMENT PARTS

- Pack of 25

No. 623-1014 Phillips head screws

No. 623-1015 Tamperproof screws

SQUARE DRAIN

No. 102-1135

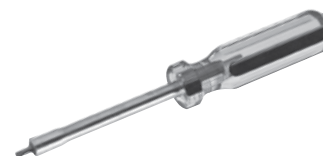
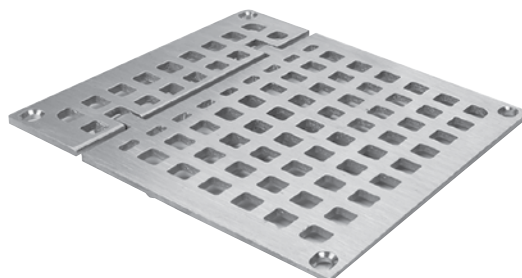
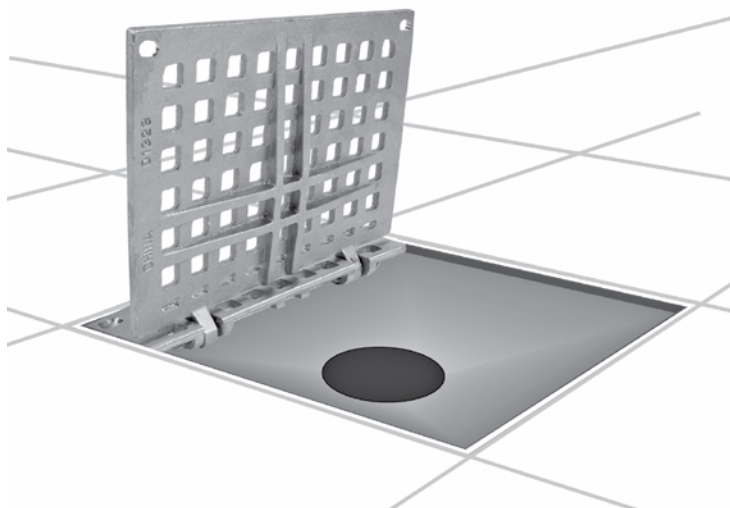
- 7 $\frac{3}{8}$ " square
- Reinforced $\frac{1}{4}$ " nickel-bronze for added strength and durability
- Includes 2 tamperproof screws and 2 Phillips head screws

REPLACEMENT PARTS

- Pack of 25

No. 623-1014 Phillips head screws

No. 623-1015 Tamperproof screws

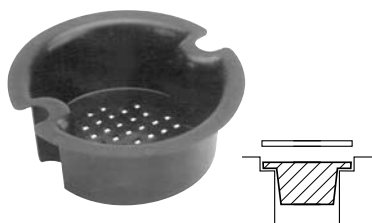


TAMPERPROOF TORX® SCREWDRIVER

No. 142-1522

- For use with FMP hinged floor drain grates
- Fits size T-20 screws with tamperproof heads
- Non-removable tip

FLOOR DRAIN GRATES & STRAINERS



FLOOR DRAIN STRAINER WITH DEEP LIP

No. 102-1119

- Acts as a secondary drain basket, under the floor sink basket, or in the floor sink drain opening
- 1 3/8" high x 3 1/2" diameter
- Plastic



FLOOR DRAIN STRAINERS

- Used to capture solid particles, allowing waste water to pass through
- Disposable
- 9" (229mm) long
- Perforated nylon bag with plastic ring

No. 102-1136 Yellow

- For 4" (102mm) drains

No. 102-1137 White

- For 6" (152mm) drains



OIL/GREASE ABSORBENT

No. 102-1138

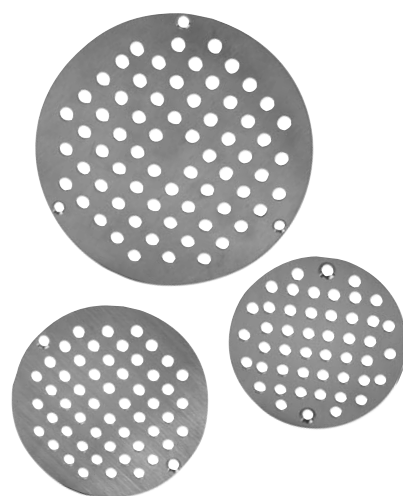
- Used with floor drain strainers (Nos. 102-1136 and 102-1137)
- Captures oil and grease before they enter pipes
- Contains 9 dry qt (10l)
- Biodegradable and non-toxic
- 100% natural cellulose

GRATES FOR SMITH FLOOR DRAINS

- Includes brass screws
- Brass

ITEM No.	DRAIN SIZE	OUTSIDE DIA.	SCREW CTRS.
102-1080	5"	4 5/8"	3 7/8"
102-1081	6"	5 1/2"	4 15/16"
102-1082	7"	6 7/16"	5"
102-1083	8"	7 7/16"	6 1/16"

No. 102-1106 Replacement screw



FLOOR DRAIN STRAINERS

Molded, durable strainer captures scraps and waste. Eliminates flooded floors and foul odors.

- Can be used in drains with regular and hinged grates
- Plastic

- No. 102-1155** 8" L x 3" OD (203mm x 76mm)
- No. 102-1156** 8" L x 4" OD (203mm x 102mm)



DOMEDISH FLOOR DRAIN STRAINERS

- Tapered at the bottom to drop into standard floor sinks
- Dome shape keeps drain flowing evenly when strainer is partially full
- 2" (51mm) deep
- Large holes for fast draining
- Heavy-duty plastic

- No. 102-1140** 6" (152mm) square
No. 102-1141 6 1/2" (165mm) square
No. 102-1142 7" (178mm) square
No. 102-1143 8" (203mm) square
No. 102-1144 8 1/2" (216mm) square
No. 102-1145 6 1/2" (165mm) round
No. 102-1146 8 1/2" (216mm) round
No. 102-1147 9 3/4" (248mm) round



ADJUSTABLE CLEAN-OUTS by ZURN®



ADJUSTABLE CLEAN-OUT BODY

No. 117-1282

- Fits over 4" (102mm) DWV pipe
- 5 $\frac{3}{16}$ " (132mm) OD cover
- Cover height adjustable from $\frac{7}{8}$ " to 1 $\frac{3}{4}$ " (22mm to 44mm)
- Nickel bronze cover and a PVC body
- Zurn no. C02450PV4



ADJUSTABLE CLEAN-OUT BODY

No. 117-1281

- Fits over 3" (76mm) or inside 4" (102mm) DWV pipe
- 5 $\frac{3}{16}$ " (132mm) OD cover
- Cover height adjustable from $\frac{7}{8}$ " to 1 $\frac{3}{4}$ " (22mm to 44mm)
- Nickel bronze cover with a PVC body
- Zurn no. C02450PV3

CLEAN-OUT BODY

No. 117-1280

- Fits over 3" (76mm) or inside 4" (102mm) DWV pipe
- Features a plug with a brass threaded insert
- Plastic
- Zurn no. C02413PVC

ACCESSORIES

- No. 117-1283** Clean-out cover
- Zurn no. C02530SS5



ADJUSTABLE FLOOR DRAIN

Designed for foot traffic and light-duty applications.

No. 117-1277

- Fits over a 3" (76mm) or inside a 4" (102mm) DWV pipe
- Nickel head height is adjustable from 1" to 1 $\frac{1}{2}$ " (25mm to 38mm)
- PVC body and heel proof grate
- Zurn no. FD2211PVC



HALF GRATE FLOOR SINK

No. 117-1279

- For 3" (76mm) DWV pipe connection
- Fit 8 $\frac{5}{8}$ " square x 6" deep (219mm x 152mm) floor opening
- Includes 8 $\frac{7}{8}$ " (225mm) square half grate and an anti-splash dome strainer
- White acid resistant enamel coating
- Zurn no. FD2375-3NH-H

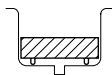
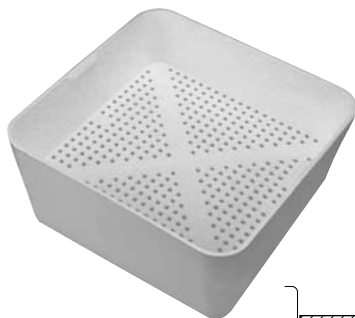


FULL GRATE FLOOR SINK

No. 117-1278

- For 3" (76mm) DWV pipe connection
- Fits 8 $\frac{5}{8}$ " square x 6" deep (219mm x 152mm) floor opening
- Includes 8 $\frac{7}{8}$ " (225mm) square full grate and an anti-splash dome strainer
- White acid resistant enamel coating
- Zurn no. FD2375-3NH-F

FLOOR DRAIN GRATES, STRAINERS & SINK BASKETS



FLOOR SINK BASKETS

- Fits into the bottom of a standard floor sink
- Removable for cleaning
- Dishwasher safe
- Plastic

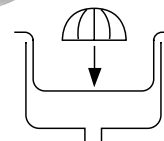
No. 102-1127 6½" x 6½" x 3" H
No. 102-1114 8½" x 8½" x 2½" H



FLOOR DRAIN STRAINER WITH LIP

No. 102-1124

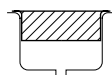
- Fits the bottom of floor sinks
- 5¾" x 5¾" with ¾" high lip
- Stainless steel



DOMESTRAINER

No. 102-1148

- Used in floor drains
- 5½" OD (140mm), 2¼" H (57mm)
- Aluminum



BAR/FLOOR SINK BASKET WITH FLANGE

No. 102-1118

- Fits into the bottom of a standard floor sink
- Also fits across the opening of a standard bar sink to catch waste while liquid flows into sink
- Removable for cleaning
- Dishwasher safe
- 12" x 12" x 4" H overall dimensions
- 8½" x 8½" basket dimensions
- Plastic



FLOOR DRAIN STRAINERS WITH LIP

- Fit the bottom of floor sinks
- 7¾" x 7¾" with ¾" high lip

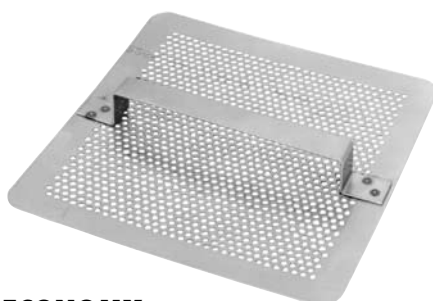
No. 102-1109 Aluminum
No. 102-1108 Stainless steel



FLOOR DRAIN STRAINER WITH DEEP LIP

No. 102-1154

- Fits the bottom of floor sinks
- 7¾" x 7¾" with 4" high lip
- Stainless steel



ECONOMY FLAT FLOOR DRAIN STRAINER

No. 102-1107

- Fits the bottom of floor sinks
- 7¾" x 7¾"
- Stainless steel



FLOOR DRAIN STRAINER WITH DEEP LIP

No. 102-1110

- Fits the bottom of floor sinks
- 7¾" x 7¾" with 2" high lip
- Stainless steel



SANI-TAP GERMICIDAL DRIP PAN STRIPS

Say good-bye to foul odors with these deodorizing and disinfecting strips. They control odors from mildew, fungi, algae, and slime. They even reduce the presence of fruit flies. Last up to 3 weeks!

No. 102-1158

- Used in beer tap and soda dispenser drip pans, and floor drains
- Can also be used in other areas, such as refrigerator drain pans and urinals
- Helps prevent drain overflows
- 5" x 1½" x ½" (127mm x 38mm x 13mm)
- Controlled release
- Pack of 10

MULTI-PURPOSE FAUCETS by ZURN®

NEW



SERVICE SINK FAUCET

No. 117-1310

- Wall mount
- Vacuum breaker spout
- 8" adjustable centers
- 1/2" NPT female inlet
- 6" spout with hose thread and pail hook
- Ceramic disk cartridges
- Chrome-plated rough brass
- Zurn no. Z843M1RC



GOOSENECK FAUCET

No. 117-1309

- Deck mount
- 4" centers
- 1/2" NPS x 2 1/4" shanks
- 1/2" inlet adaptor nuts
- 2.2 GPM aerator
- Ceramic disk cartridges
- Chrome-plated brass
- Zurn no. Z812A1



METERING LAVATORY FAUCET

No. 117-1312

- Deck mount
- 4" centers
- 1/2" NPS x 2 1/4" shanks
- Includes inlet adaptor nuts
- 1 GPM aerator
- Internal in-line filter
- Slow closing
- Adjustable cycle time
- Chrome-plated brass
- Zurn no. Z86500



E-Z SENSOR FAUCETS

For a hands-free sanitary operation.

- Deck mount
- 1/2" NPS shank
- Automatic 30-second time-out
- Internal in-line filter
- Low battery indicator light
- 1.5 GPM vandal resistant aerator
- Includes 4 AA batteries
- Polished chrome-plated cast brass body



- No. 117-1318**
 - Replaces 4" center faucet
 - Zurn no. Z6915MT
- No. 117-1317**
 - Includes 4" cover plate
 - Zurn no. Z6912MT-CP4



AQUASPEC® METERING FAUCET

No. 117-1311

- Deck mount
- 4" centers
- 1/2" NPS x 2 1/4" shanks
- Includes inlet adaptor nuts
- 1 GPM aerator
- Slow closing
- Adjustable cycle time with manual hot and cold adjustment
- Chrome-plated brass
- Zurn no. Z86000



AQUASPEC® CARTRIDGES

- For quarter-turn faucets (Nos. 117-1309, 117-1310)
- Includes 1 each of hot and cold cartridge
- Ceramic disk

- No. 117-1314** Short stem
- 1 3/16" length
 - Zurn no. G67771

- No. 117-1315** Long stem
- 1 1/8" length
 - Zurn no. G67772



Many items on this page are available
Lead-free Compliant.

Ask us about the item you need.

8" CENTER DECK MOUNT FAUCETS



COMMERCIAL-DUTY FAUCETS

- 1/2" NPS x 1 5/8" shanks
- 1/2" slip fitting
- Chrome-plated brass shell-type body

No. 107-1021	6" spout
No. 107-1022	8" spout
No. 107-1023	10" spout
No. 107-1024	12" spout
No. 107-1025	14" spout
No. 107-1026	16" spout
No. 107-1027	Gooseneck spout



FAUCETS by FISHER

- 1/2" NPS x 2" shanks
- 1/2" slip fittings
- Chrome-plated brass

No. 112-1022	8" spout
No. 112-1024	12" spout
No. 112-1025	14" spout
No. 112-1026	Gooseneck spout



1100 SERIES FAUCETS by T&S BRASS

- 1/2" NPS x 1" shanks
- Chrome-plated brass

No. 110-1050	6" spout
No. 110-1051	8" spout
No. 110-1046	10" spout
No. 110-1048	12" spout
No. 110-1053	Gooseneck spout



200 SERIES FAUCETS by T&S BRASS

- 1/2" NPT female inlets
- Chrome-plated brass

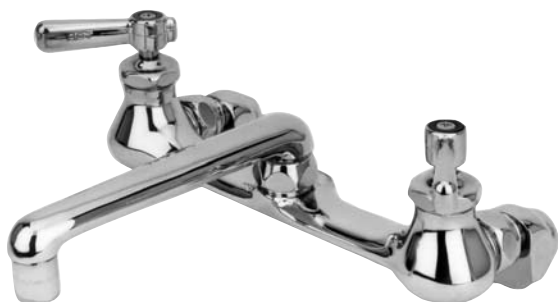
No. 110-1049	6" spout
No. 110-1045	10" spout
No. 110-1047	12" spout
No. 110-1052	Gooseneck spout



Many items on this page are available
Lead-free Compliant.

Ask us about the item you need.

8" CENTER WALL MOUNT FAUCETS



FAUCETS by CHICAGO

- 1/2" NPT female inlets
- Chrome-plated brass

No. 114-1003 6" spout
No. 114-1004 9" arched spout
No. 114-1001 12" spout
No. 114-1002 15" spout



arched spout



COMMERCIAL-DUTY FAUCETS

- 1/2" NPT female inlets
- Heavy cast chrome-plated brass body

No. 107-1014 6" spout
No. 107-1015 8" spout
No. 107-1016 10" spout
No. 107-1017 12" spout
No. 107-1018 14" spout
No. 107-1019 16" spout
No. 107-1029 18" double-jointed spout
No. 107-1020 Gooseneck spout



ENCORE FAUCETS by CHG

- 1/2" NPT female inlets
- "No splash" and "Bubbler" aerators included
- Contain internal check valves
- Chrome-plated brass

No. 107-1056 6" spout
No. 107-1057 8" spout
No. 107-1051 10" spout
No. 107-1052 12" spout
No. 107-1053 14" spout
No. 107-1055 16" spout



FAUCETS by FISHER

- 1/2" NPT male inlets
- Includes 2 sets of EZ Install inlet adaptors to retrofit from Chicago, Encore, and Krowne
- Chrome-plated brass

No. 112-1014 6" spout
No. 112-1015 8" spout
No. 112-1016 10" spout
No. 112-1017 12" spout
No. 112-1018 14" spout
No. 112-1043 Base faucet only
 • Spout not included



Many items on this page are available
Lead-free Compliant.

Ask us about the item you need.

8" CENTER WALL MOUNT FAUCETS



200 SERIES FAUCETS by T&S BRASS

- Eterna series
- 1/2" NPT female inlets
- Chrome-plated brass

No. 110-1019	6" spout
No. 110-1021	8" spout
No. 110-1009	10" spout
No. 110-1011	12" spout
No. 110-1013	14" spout
No. 110-1017	18" spout
No. 110-1015	18" double-jointed spout
No. 110-1023	Gooseneck spout



1100 SERIES FAUCETS by T&S BRASS

- 1/2" NPS x 1" shanks
- Chrome-plated brass

No. 110-1020	6" spout
No. 110-1022	8" spout
No. 110-1010	10" spout
No. 110-1012	12" spout
No. 110-1014	14" spout
No. 110-1018	18" spout



HIGH VOLUME WALL MOUNT FAUCET by T&S BRASS

No. 110-1033

- For use where water must be delivered rapidly
- 12" spout
- 3/4" NPT female street elbow inlets
- Chrome-plated brass
- T&S no. B290



HEAVY-DUTY FAUCET WITH ADJUSTABLE CENTERS by T&S BRASS

No. 110-1032

- Eterna series
- 12" spout
- Adjustable centers from 2 1/4" to 8 1/4"
- 1/2" NPT female inlets
- Chrome-plated brass
- T&S no. B236



Many items on this page are available
Lead-free Compliant.

Ask us about the item you need.

SERVICE SINK FAUCETS



WALL MOUNT SERVICE SINK FAUCET by T&S BRASS

No. 110-1006

- Vacuum breaker spout
- 7" rigid spout with hose thread and pail hook
- 8" centers
- 1/2" NPT female inlets
- Chrome-plated rough brass
- T&S no. B665BSTR



VACUUM BREAKER

No. 111-1164

- For use on T&S Brass service sink faucet (No. 110-1006)
- 1/2" NPT

No. 111-1176 Repair kit
• T&S no. B0969RK01



ENCORE WALL MOUNT SERVICE SINK FAUCET WITH SUPPORT BRACKET by CHG

No. 107-1071

- Vacuum breaker spout
- Contains internal check valves
- 6 1/2" spout with hose thread and pail hook
- 8" adjustable centers
- 1/2" NPT female inlets
- Solid brass body with rough chrome finish



VACUUM BREAKER

No. 111-1015

- 1/2" NPT
- Unfinished brass



Many items on this page are available
Lead-free Compliant.

Ask us about the item you need.



ENCORE WALL MOUNT SERVICE SINK FAUCET by CHG

No. 108-1005

- 2 1/2" rigid spout with pail hook and hose thread
- 8" centers
- 1/2" NPT female inlets
- Chrome-plated rough brass

LABORATORY FAUCETS



WALL MOUNT LAB SINK FAUCET by T&S BRASS

No. 110-1101

- 4" wrist blades
- Rose spray outlet
- 8" centers
- 1/2" NPT female inlets
- Chrome-plated brass
- T&S no. B350-4



DECK MOUNT LAB SINK FAUCET by T&S BRASS

No. 110-1103

- 4" wrist blades
- 4" centers
- 1/2" NPS x 2 1/4" shank
- 1/2" inlet adaptor nuts
- 5" height from deck to spout tip
- Chrome-plated brass
- T&S no. B892



DECK MOUNT LAB SINK FAUCET by T&S BRASS

No. 110-1102

- 4" wrist blades
- Rose spray outlet
- Adjustable 6 1/2" to 8" centers
- 1/2" NPS x 2" shank
- 1/2" inlet adaptor nuts
- 9 3/4" overall height
- 4 3/4" height from deck to spout
- Chrome-plated brass
- T&S no. B865-4



Many items on this page are available
Lead-free Compliant.

Ask us about the item you need.



HAND SINK

The most economical sink available. The raised backplash and sides reduce splashing. Made from durable, high-impact plastic. Its compact size requires 14" of wall space, making this sink ideal for areas where space is limited.

No. 117-1062

- 17" H x 14" W outside dimensions
- 10 1/2" high backplash
- 12" x 12" x 5" high bowl
- 1 1/4" NPS drain
- Designed for a 4" center deck mount faucet
- Drain and tailpiece included

Note: Faucet not included.



QUIK-WASH™ HAND WASH FAUCET CONTROL

Patented, antimicrobial control offers both automatic self-closing and a hands-free, full-on position, allowing for multi-purpose use.

No. 117-1211

- Reduce cross-contamination and water costs
- Includes universal adaptors that work with virtually any faucet
- Handle constructed from antimicrobial material
- Solid brass and stainless steel



KLEEN-BRUSH® HAND AND NAIL CLEANING SYSTEM by SAN JAMAR®

No. 150-6028

- Attaches to any gooseneck faucet to keep nailbrush handy for use
- Innovative design helps wash dirt and bacteria down the drain
- Rotates horizontally for easy cleaning of left or right hand
- Flips up out of the way when not in use
- Brush can be easily removed for deep cleaning in a dishwasher
- Holder accommodates a variety of brush brands
- Can be used with disposable hand and nail brush (No. 150-6047)

EYE WASH STATION

Contains 2 GS-Plus™ spray-type heads with dust covers and hand paddle activated valve.

No. 107-1080

- 1/2" NPT female inlet
- 1 1/4" NPT female drain outlet
- 11 1/2" round stainless steel bowl
- Heavy-duty cast aluminum wall bracket
- Wall mount
- Includes ANSI compliant identification sign



THERMOSTATIC MIXING VALVE

No. 107-1081

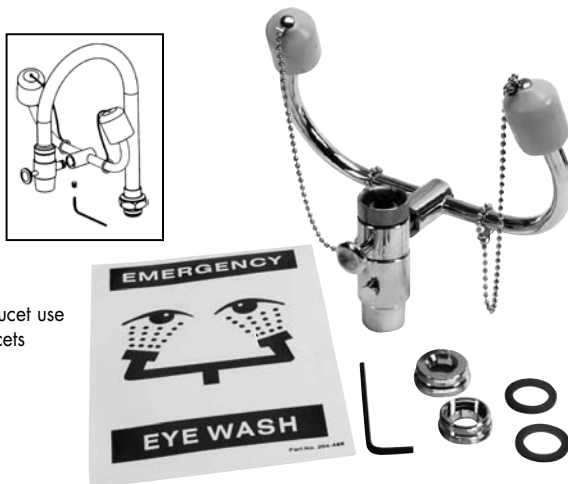
- Used with Eye Wash Station (No. 107-1080)
- 1/2" nominal sweat female inlet
- 1/2" NPT female outlet
- Gauge display range 0° to 140°F (20° to 60°C)
- Heavy-duty mounting bracket for securing to panel or wall
- Brass
- ANSI compliant



EYE WASH STATION by BRADLEY

No. 107-1079

- Does not interfere with normal faucet use
- Fits standard and gooseneck faucets (adaptors included)
- One step activation
- ANSI compliant



INSTANT-OFF™ AUTOMATIC FAUCET CONTROLS

- Will fit on most brands of faucets
- Reduces cross-contamination and water costs
- Chrome-plated solid brass
- 5/64" internal thread size, includes an external adaptor 15/16-27 thread
- Theft-proof models are supplied with a special installation tool

No. 117-1143 3 3/8" stainless steel push rod

No. 117-1144 Theft proof 3 3/8" stainless steel push rod

No. 117-1150 5 3/8" stainless steel push rod for gooseneck faucets



AUTOMATIC FAUCETS

CHEK POINT™ AUTOMATIC FAUCET KIT by T&S BRASS

Hands-free operation virtually eliminates cross-contamination.

No. 110-1116

- Gooseneck spout wall mount
- 120 volt power supply
- Easy retrofit
- Can operate with 4 AA batteries (not included)
- T&S Brass nos. EC1101, EC3101



AUTOMATIC FAUCET KITS by EQUIP



Hands-free operation virtually eliminates cross-contamination. Indicator lights alert you when there are approximately 8000 cycles or 1 month of battery life remaining.

- On/Off switch for manual operation
- Red LED low battery indicator
- 60-second maximum running time
- Includes 4 AA batteries and AC power adaptor

No. 110-1117 4" deck mount

No. 110-1120 Gooseneck

No. 253-1241 Replacement AA battery



Many items on this page are available
Lead-free Compliant.

Ask us about the item you need.

WALL MOUNT FAUCETS



1100 SERIES FAUCET by T&S BRASS

No. 110-1025

- 3½" centers
- 12" spout length
- ½" NPS x 1" shank
- Chrome-plated brass
- T&S no. B1108



1100 SERIES FAUCETS by T&S BRASS

- 4" centers
- ½" NPS x 1" shank
- Chrome-plated brass

ITEM No.	SPOUT LENGTH	T&S No.
110-1029	6"	B1115
110-1030	8"	B1116
110-1027	10"	B1117
110-1028	12"	B1118
110-1031	Gooseneck	B1146



FAUCET by FISHER

No. 112-1039

- 4" centers
- 12" spout
- ½" NPS x 1" shank
- Chrome-plated brass
- Fisher no. 3613



COMMERCIAL-DUTY FAUCETS

- 4" centers
- ½" NPS x ¾" shank
- Chrome-plated brass

No. 107-1036 6" spout

No. 107-1035 10" spout

No. 107-1037 Gooseneck spout



Many items on this page are available
Lead-free Compliant.

Ask us about the item you need.

4" CENTER DECK MOUNT FAUCETS



NEW

SINGLE CONTROL FAUCET by ZURN®

No. 117-1290

- ½" NPS x 2" shanks
- Includes inlet adaptor nuts
- 2 GPM aerator
- Polished chrome-plated brass
- Zurn no. Z81000



NEW

LAVATORY FAUCET by ZURN®

No. 117-1292

- Lead-free
- 18" long stainless steel flex hoses
- ¾" female compression fitting connections
- 2.2 GPM aerator
- Polished chrome-plated housing with lead-free brass internals
- Zurn no. Z7440



LAVATORY FAUCET by CHICAGO

No. 114-1006

- 4" spout
- ½" NPS x 2¼" long
- Chrome-plated cast body
- Chicago no. 802ACP, 802VCP



No. 114-1007 Reduced flow aerator



COMMERCIAL-DUTY FAUCETS

- ½" NPS x 1½" shanks
- ½" slip fittings
- Chrome-plated brass shell-type body

No. 107-1007 6" spout
 No. 107-1008 8" spout
 No. 107-1009 10" spout
 No. 107-1010 12" spout
 No. 107-1011 14" spout
 No. 107-1013 Gooseneck spout



FAUCETS by FISHER

- ½" NPS x 2" shanks
- ½" slip fittings
- Chrome-plated brass

ITEM No.	SPOUT LENGTH	FISHER No.
112-1028	6"	3510
112-1029	8"	3511
112-1031	12"	3513
112-1032	14"	3514
112-1033	Gooseneck	3515



Many items on this page are available
Lead-free Compliant.

Ask us about the item you need.

4" CENTER DECK MOUNT FAUCETS



LAVATORY FAUCET

No. 107-1045

- 1/2" NPS x 1 7/8" shanks
- 1/2" inlet adaptor nuts
- Chrome-plated die-cast zinc



SLOW CLOSING LAVATORY FAUCET by T&S BRASS

No. 110-1109

- 1/2" NPS x 1 1/2" shanks
- 1/2" inlet adaptor nuts
- Chrome-plated brass
- T&S no. B831



SLOW CLOSING LAVATORY FAUCET WITH RIGID GOOSENECK SPOUT by T&S BRASS

No. 110-1112

- Eterna series
- 1/2" NPS x 1 1/2" shanks
- 1/2" inlet adaptor nuts
- Chrome-plated brass
- T&S no. B834



1100 SERIES FAUCETS by T&S BRASS

- 1/2" NPS x 1" shanks
- Chrome-plated brass

ITEM No.	SPOUT LENGTH	T&S No.
110-1040	6"	B1110
110-1042	8"	B1111
110-1036	10"	B1112
110-1038	12"	B1113
110-1044	Gooseneck	B1141



200 SERIES FAUCETS by T&S BRASS

- 1/2" NPT female inlets
- Chrome-plated brass

ITEM No.	SPOUT LENGTH	T&S No.
110-1039	6"	B228
110-1041	8"	B227
110-1035	10"	B226
110-1037	12"	B225
110-1043	Gooseneck	B325



Many items on this page are available
Lead-free Compliant.

Ask us about the item you need.

DECK MOUNT PANTRY FAUCETS



SWIVEL GOOSENECK ENCORE FAUCET by CHG

No. 107-1059

- 1 1/8" OD x 2 1/4" shank
- 1/4" male inlets on 4" centers
- "No splash" aerator included
- 9" high from deck to spout tip
- 13" overall height from deck
- Contains internal check valves
- Chrome-plated brass



RIGID GOOSENECK FAUCET by T&S BRASS

No. 110-1062

- 1/2" NPS x 2 3/8" shank
- 1/4" NPT male inlet
- 8 1/4" height from deck to spout tip
- 13 1/4" overall height from deck
- Chrome-plated brass
- T&S no. B305



SWIVEL FAUCET by T&S BRASS

No. 110-1008

- 6" spout
- 1/2" NPS x 2 3/8" shank
- 1/4" NPT male inlet
- Chrome-plated brass
- T&S no. B207



SWIVEL GOOSENECK FAUCET by T&S BRASS

No. 110-1063

- 1/2" NPS x 2 3/8" shank
- 1/4" NPT male inlet
- 8 1/4" height from deck to spout tip
- 12 1/4" overall height from deck
- Chrome-plated brass
- T&S no. B306



RIGID GOOSENECK FAUCET by T&S BRASS

No. 110-1064

- 1 1/8" OD x 2 1/4" shank
- 1/4" NPT male inlet on 4" centers
- 8" height from deck to spout tip
- 13" overall height from deck
- Chrome-plated brass
- T&S no. B300



Many items on this page are available
Lead-free Compliant.

Ask us about the item you need.

POT & KETTLE FILLER FAUCETS

DECK MOUNT ELEVATED KETTLE FILLER FAUCET by T&S BRASS

No. 110-1092

- 18" spout
- 27 1/4" height from deck to spout tip
- 1/2" NPS x 2 1/2" shank
- 1/4" NPT male inlet
- Chrome-plated brass
- T&S no. B275



DECK MOUNT ELEVATED KETTLE FILLER FAUCET by T&S BRASS

No. 110-1108

- 18" spout
- 27 1/4" height from deck to spout tip
- 1 1/8" OD x 2 1/4" center shank
- 1/4" NPT male inlets on 4" centers
- Chrome-plated brass
- T&S no. B270



WALL MOUNT DOUBLE HANDLE POT AND KETTLE FILLER by T&S BRASS

No. 110-1060

- 8" centers
- 1/2" NPT female inlets
- 60" stainless steel flexible hose
- Vacuum breaker included
- Chrome-plated brass
- T&S no. B610

WALL MOUNT SINGLE HANDLE POT AND KETTLE FILLER by T&S BRASS

No. 110-1061

- 1/2" NPT female inlet
- 60" stainless steel flexible hose
- Vacuum breaker included
- Chrome-plated brass
- T&S no. B605



REPLACEMENT HOSE AND VALVE FOR POT AND KETTLE FILLER by T&S BRASS

No. 110-1059

- 1/2" NPT male inlet
- 60" stainless steel flexible hose
- Chrome-plated brass
- T&S no. B102A



Many items on this page are available
Lead-free Compliant.

Ask us about the item you need.

DOUBLE-JOINTED FAUCETS



WALL MOUNT DOUBLE HANDLE FAUCETS by T&S BRASS

No. 110-1056

- 18" double-jointed spout with On/Off nozzle control
- 8" centers
- 1/2" NPT female inlets
- Chrome-plated brass
- T&S no. B597

No. 110-1015 Same except without On/Off nozzle control
• T&S no. B265



WALL MOUNT SINGLE HANDLE FAUCETS by T&S BRASS

No. 110-1054

- 18" double-jointed spout with On/Off nozzle control
- 1/2" NPT female inlet
- Chrome-plated brass
- T&S no. B592

No. 110-1055 Same except without On/Off nozzle control
• T&S no. B260



DECK MOUNT SINGLE HANDLE FAUCET by T&S BRASS

No. 110-1057

- 18" double-jointed spout with On/Off nozzle control
- 1/2" NPS x 2 1/4" shank
- 1/4" NPT male inlet
- Chrome-plated brass
- T&S no. B590



ON/OFF NOZZLE CONTROL by T&S BRASS

No. 110-1111

- For use on faucets; Nos. 110-1054, 110-1056, and 110-1057
- T&S nos. 5948-40, 35A



Many items on this page are available
Lead-free Compliant.

Ask us about the item you need.

WOK RANGE FAUCETS



ENCORE® WALL MOUNT WOK RANGE FAUCET WITH SWING SPOUT by CHG

No. 107-1070

- For installation between 2 woks
- ¼ turn of lever operates faucet
- 10" spout with aerator
- 18" overall projection
- ½" NPS x 1" shank
- ½" NPS male inlet fitting
- Chrome-plated brass

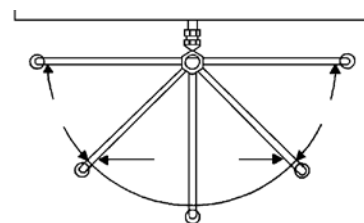


AUTOMATIC WALL MOUNT WOK RANGE SWING FAUCET

No. 107-1031

- 12" spout
- ¾" NPT male inlet
- Chrome-plated brass

No. 106-1167 Aerator



Center-on faucet—for use over 1 wok



WALL MOUNT WOK RANGE FAUCET by CHICAGO

No. 114-1008

- For installation between 2 woks
- ¼ turn of lever operates faucet
- 12" spout with aerator
- 22" overall projection
- ½" NPT inlet
- Chrome-plated brass
- Chicago nos. 334CP, CF8231H201LC



WALL MOUNT WOK RANGE FAUCET by FISHER

- For installation between 2 woks
- ¼ turn of lever operates faucet
- ½" NPS x 1" shank
- ½" slip fitting
- Chrome-plated brass

No. 112-1037 10" spout with aerator

- 18½" overall projection
- Fisher no. 4750

No. 112-1042 12" spout with aerator

- 16½" overall projection
- Fisher no. 9119



Many items on this page are available
Lead-free Compliant.

Ask us about the item you need.

SPECIALTY FAUCETS



SWIVEL SPOUT FAUCET

No. 107-1032

- Swivels 360°
- 4½" spout
- ½" NPS x 1¼" shank
- ½" NPT inlet
- Chrome-plated brass



COMMERCIAL-DUTY SWIVEL SPOUT STEAM TABLE FAUCET

No. 107-1028

- Spout swivels 360°
- 6" spout
- ½" NPS x 1¾" shank
- ½" slip fitting
- Chrome-plated brass



STOCK POT FAUCET

No. 107-1042

- Replaces ¾" faucet used by Legion, Lincoln, Commercial Aluminum, and others
- ¾" NPT x ⅝" shank
- Satin nickel



INLET FAUCET

No. 107-1048

- ½" NPS x 1¼" shank
- ½" slip fitting
- Chrome-plated brass



INLET FAUCET

No. 107-1049

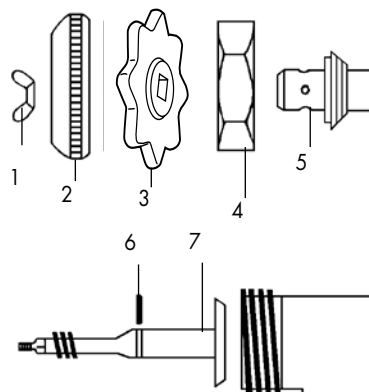
- Aerator tip
- ½" NPS x 1¼" shank
- ½" slip fitting
- Chrome-plated brass



WATER CONTROL VALVE

No. 107-1077

- ½" NPT inlet x ½" compression outlet
- Chrome-plated



STEAM JACKETED KETTLE FAUCETS

- Faucets and parts are interchangeable with similar faucets used by Cleveland, Groen, Market Forge, Legion, and others
- Stainless steel

No. 107-1038 For 1½" OD tubing

No. 107-1039 For 2" OD tubing

No. 107-1040 For 3" OD tubing

KETTLE FAUCET PARTS

REF

No.	ITEM No.	DESCRIPTION
-----	----------	-------------

FOR 1½" FAUCETS

1.	106-1064	Handle wing nut
2.	106-1060	Handle
4.	106-1061	Large nut
5.	106-1062	Bonnet
6.	106-1063	O-ring
7.	106-1059	Stem

FOR 2" FAUCETS

1.	106-1064	Handle wing nut
2.	106-1060	Handle
4.	106-1066	Large nut
5.	106-1067	Bonnet
6.	106-1063	O-ring
7.	106-1065	Stem

FOR 3" FAUCETS

1.	106-1042	Handle wing nut
3.	106-1038	Handle
4.	106-1039	Large nut
5.	106-1040	Bonnet
6.	106-1041	O-ring
7.	106-1037	Stem

GENERAL USE FAUCET PARTS



UNIVERSAL WRIST BLADE SET

No. 106-1142

- Set screw holds handles snug
- Set includes two 4" long wrist blades with securing bases and set screws, hot and cold index buttons, and an Allen wrench

FAUCET HOLE COVER

No. 117-1125

- 1 3/4" diameter
- Plated steel



SUPPLY LINE

No. 113-1084

- 36" long, braided stainless steel
- 1/2" NPT female x 1/2" NPT male fittings



ELBOW

No. 111-1166

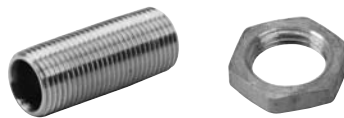
- Use to connect wall mount faucet or pre-rinse to supply line
- Will fit within a standard 2" backsplash
- 1/2" NPT female inlet and outlet
- 90°
- Brass



PRO-EXTREME™ PIPE COVER

No. 117-1252

- For use on lavatory drain pipes and supply lines
- Prevents exposure to high temperature pipes
- Easy to remove and reinstall
- White PVC with tear guides for custom fit
- Includes 1 P-trap cover and 2 valve and supply line covers



FAUCET INLET NIPPLE AND LOCK NUT

- Converts faucets from female to male inlets
- 1/2" NPS x 2" L
- Brass

No. 106-1027 Inlet nipple

No. 117-1023 1/2" NPS lock nut



NEW

SINK DRAIN PIPE INSTALLATION KIT by ZURN®

No. 117-1291

- For hand sink plumbing installation
- Kit includes: 1 1/4" drain with a 6" extension pipe
1 1/4" P-type trap with a clean-out
Two 1/2" IPS x 1/2" compression water valves with tubing
Protective pipe cover for drain and water valves

• Zurn no. Z9901-000-77-24-5



SPOUT ACCESSORIES

1. **No. 106-1044** Hose adaptor
2. **No. 111-1028** Stream regulator
3. **No. 106-1043** Aerator

PARTS FOR CENTRAL BRASS FAUCETS



SPOUTS

- Include aerators

No. 109-1008 8" spout
No. 109-1009 12" spout
No. 109-1007 14" spout



HANDLES AND STEM ASSEMBLIES

HANDLES

No. 109-1006 Cold
No. 109-1004 Hot

FULL-TURN STEM AND SEAT ASSEMBLIES

No. 109-1002 Cold
No. 109-1005 Hot



1



2

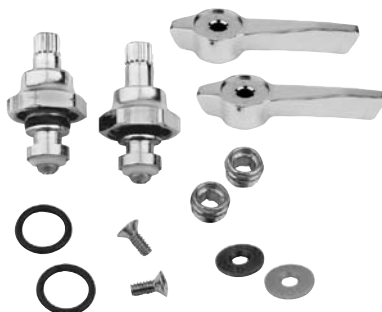


3

SPOUT ACCESSORIES

1. **No. 106-1044** Hose adaptor
2. **No. 111-1028** Stream regulator
3. **No. 106-1043** Aerator

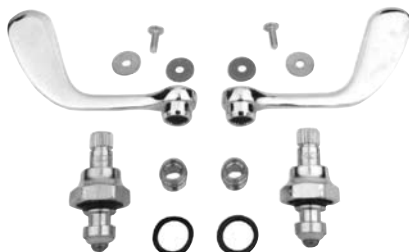
PARTS FOR COMMERCIAL-DUTY FAUCETS



QUARTER-TURN FAUCET REPAIR KIT

No. 106-1020

- For wall and deck mount cast brass faucets
- Kit includes 2 each: handles, stems, seats, seat washers, washer screws, bonnets, spout O-rings, and stem O-rings



4" QUARTER-TURN WRIST BLADE KIT

No. 106-1141

- For wall mount cast brass faucets
- Includes wrist blades and stem repair kits
- Chrome-plated brass



INLET NIPPLE KIT

No. 117-1009

- For installing faucets in a standard 2" backsplash
- Converts female inlets to male
- Kit includes: Two 1/2" NPS x 1 1/2" brass nipples with lock nuts and washers;
Two 1/2" NPT x 1/2" sweat brass elbows



COUPLING FLANGE

No. 106-1024

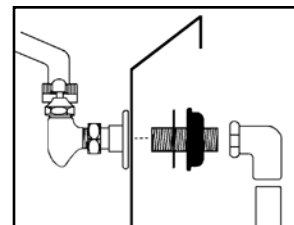
- Sold as a pair
- Includes 2 washers



DECK MOUNT KIT

No. 117-1137

- For simple installation of deck faucets and pre-rinses
- Converts female inlets to male
- Kit includes 2 each: 1/2" NPS x 2" long nipples, washers, and lock nuts



PARTS FOR COMMERCIAL-DUTY FAUCETS



FULL-TURN FAUCET REPAIR KIT

No. 106-1143 For wall mount shell body faucets

- For use on hand sink wall faucets (Nos. 107-1035, 107-1036, 107-1037)
- Kit includes 2 each: handles, stems, seats, seat washers, washer screws, bonnets, spout, O-rings, and stem O-rings



FAUCET HANDLE REPAIR KIT

No. 106-1147

- For hot or cold water handle assemblies
- Kit includes: handle, blue index disk, red index disk, and handle screw
- Chrome-plated brass



4" WRIST BLADE SET AND COVER



- No. 106-1136** Wrist blades only
 - For new 20 tooth spline design
 - Treated with Saniguard® antimicrobial coating
 - Includes index buttons and screws
 - Chrome-plated brass
- No. 106-1173** Handle cover only
 - Sold individually



SPOUT ACCESSORIES

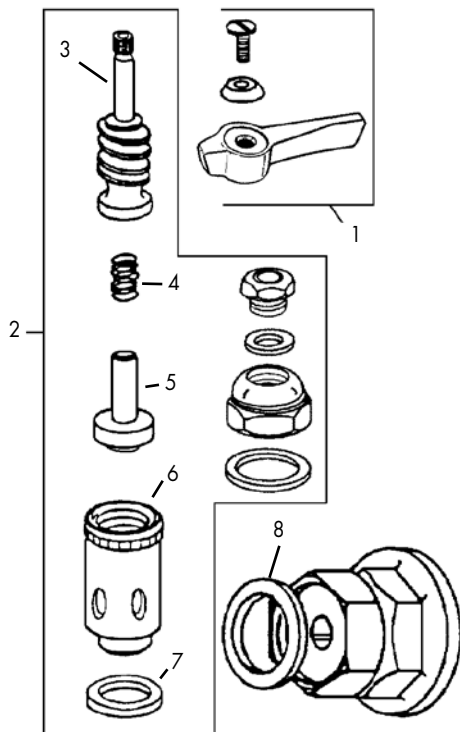
- No. 106-1044** Hose adaptor
- No. 111-1028** Stream regulator
- No. 106-1043** Aerator



SPOUTS

- No. 106-1011** 6" spout
- No. 106-1012** 8" spout
- No. 106-1013** 10" spout
- No. 106-1014** 12" spout
- No. 106-1015** 14" spout
- No. 106-1016** 16" spout
- No. 106-1017** Swivel gooseneck spout
- No. 106-1028** 18" double-jointed spout

PARTS FOR CHG ENCORE® FAUCETS



FULL-TURN FAUCET AND PRE-RINSE STEM PARTS

REF No.	ITEM No.	DESCRIPTION
1	106-1147	Cold/hot handle
2	106-1123	Cold stem assembly (full-turn)
2	106-1124	Hot stem assembly (full-turn)
3	106-1108	Cold stem
3	106-1112	Hot stem
4	106-1109	Spring
5	106-1110	Brass backcheck with washer and screw
6	106-1111	Cold removable insert
6	106-1113	Hot removable insert
7	106-1129	Teflon® seat gasket
8	106-1128	Coupling flange washer



QUARTER-TURN STEM ASSEMBLIES

- For model series KN50
- Can be used to retro-fit existing full-turn faucets

No. 106-1162 Cold
No. 106-1163 Hot



QUARTER-TURN STEM ASSEMBLIES

- For models KN41, KN45 quarter-turn faucets
- Solid brass valve seat

No. 106-1170 Cold
No. 106-1171 Hot



FULL-TURN FAUCET REPAIR KITS

- Kit includes 1 each: stem, removable insert, brass backcheck with seat washer and screw; 2 each: seat washers and seat washer screws; 3 each: packings, top gaskets, bottom gaskets, backcheck springs; and 4 each: spout O-rings

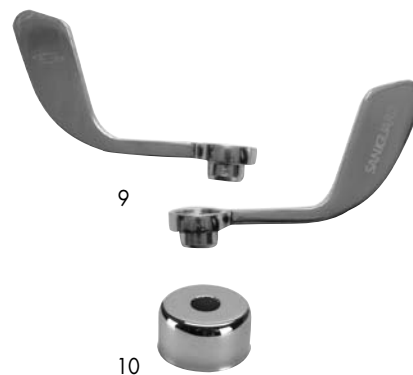
No. 106-1145 Cold water valve
No. 106-1146 Hot water valve



FAUCET HANDLE REPAIR KIT

No. 106-1147

- Kit includes: handle, blue index disk, red index disk, and handle screw
- Chrome-plated brass



4" WRIST BLADE SET AND COVER



- No. 106-1136 Wrist blades only
 - For new 20-tooth spline design
 - Treated with Saniguard® antimicrobial coating
 - Includes index buttons and screws
 - Chrome-plated brass
- No. 106-1173 Handle cover only
 - Sold individually

PARTS FOR CHG ENCORE® FAUCETS



SPOUT ACCESSORIES

1. **No. 106-1044** Hose adaptor
2. **No. 111-1028** Stream regulator
3. **No. 106-1043** Aerator

SWING TO RIGID SPOUT ADAPTOR

No. 106-1149

- Converts a standard Encore swivel spout to a 3/8" NPT riser pipe or rigid gooseneck spout
- Chrome-plated brass



ADJUSTABLE SUPPLY INLETS

Permits easy, fast installation by providing adjustability of different faucet or pre-rinse centers to match varying installation centers.

No. 106-1159

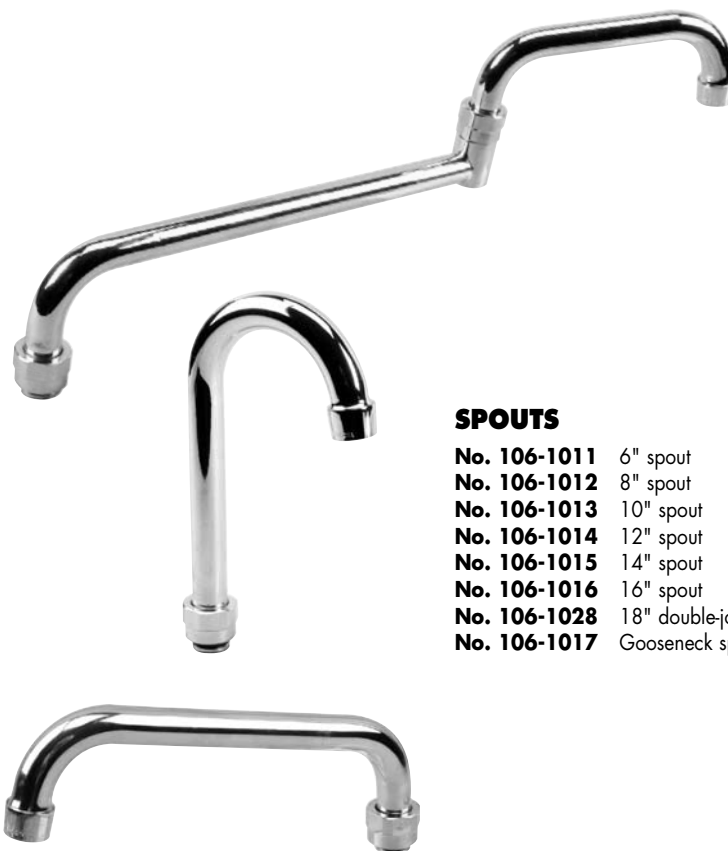
- 2" total range
- 1/2" NPT female inlets
- Coupling flange washers included
- Deck mount kit included (No. 117-1137)
- Chrome-plated brass



DECK MOUNT KIT

No. 117-1137

- For simple installation of deck faucets and pre-rinses
- Converts female inlets to male
- Kit includes 2 each: 1/2" NPS x 2" long nipples, washers, and lock nuts



SPOUTS

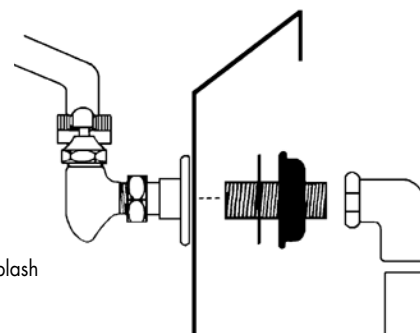
- No. 106-1011** 6" spout
- No. 106-1012** 8" spout
- No. 106-1013** 10" spout
- No. 106-1014** 12" spout
- No. 106-1015** 14" spout
- No. 106-1016** 16" spout
- No. 106-1028** 18" double-jointed spout
- No. 106-1017** Gooseneck spout



INLET NIPPLE KIT

No. 117-1009

- For installing faucets in a standard 2" backsplash
- Converts female inlets to male
- Kit includes: Two 1/2" NPS x 1 1/2" brass nipples with lock nuts and washers;
Two 1/2" NPT x 1/2" sweat brass elbows

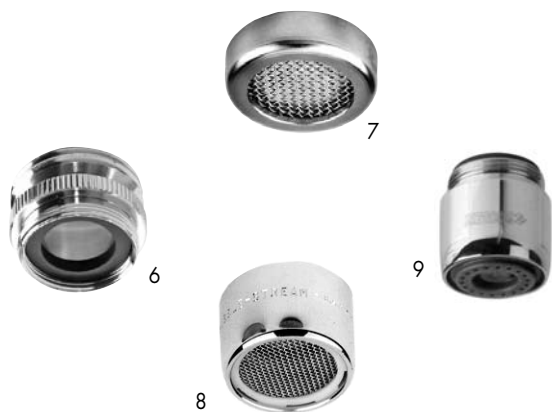


PARTS FOR CHICAGO FAUCETS



SPOUTS

1. **No. 115-1015** 6" spout
1. **No. 115-1010** 12" spout
1. **No. 115-1011** 15" spout
2. **No. 115-1020** 8" spout
3. **No. 115-1024** 9" spout
4. **No. 115-1007** Swivel gooseneck spout
5. **No. 115-1005** 18" double-jointed spout



SPOUT ACCESSORIES

6. **No. 115-1026** Hose adaptor
7. **No. 115-1025** Stream tip
8. **No. 115-1027** Aerator
9. **No. 114-1007** Reduced flow aerator

PARTS FOR CHICAGO FAUCETS



SPOUT ADAPTOR

No. 115-1028

- Converts a standard Chicago swivel spout to a $\frac{3}{8}$ " NPT riser pipe or rigid gooseneck spout
- Chrome-plated brass



FAUCET REPAIR KIT

No. 115-1006

- Kit includes 2 each of gaskets, seat O-rings, seat washers, packings, packing O-rings, sleeve O-rings, hard seat washers, stem O-rings, and 4 packing washers
- Repairs 2 "X" style or 2 "XT" style cartridges



INLET NIPPLE KIT

No. 117-1009

- For installing faucets in a standard 2" backsplash
- Converts female inlets to male
- Kit includes: two $\frac{1}{2}$ " NPS x $1\frac{1}{2}$ " brass nipples with lock nuts and washers; two $\frac{1}{2}$ " NPT x $\frac{1}{2}$ " sweat brass elbows



QUARTER-TURN HANDLES AND STEM ASSEMBLIES

HANDLES

1. No. 115-1013 Cold
2. No. 115-1014 Hot

QUARTURN XT STEM ASSEMBLIES

3. No. 115-1009 Cold-1 identifier ring
4. No. 115-1008 Hot-2 identifier rings



4" WRIST BLADES

No. 115-1012

- Sold by the pair
- Includes index buttons and screws

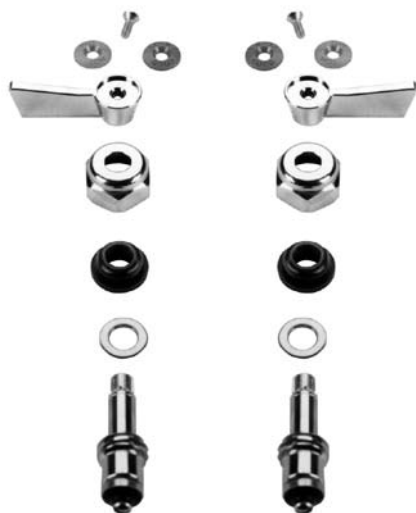


DECK MOUNT KIT

No. 117-1137

- For simple installation of deck faucets and pre-rinses
- Converts female inlets to male
- Kit includes: 2 each of $\frac{1}{2}$ " NPS x 2" long nipples, washers and lock nuts

PARTS FOR FISHER FAUCETS



STEM ASSEMBLIES

- For faucets with 1/2" stem assemblies
- Include 1 each: screw, red button, blue button, lever handle, bibb cap, duck gasket, washer, check stem, and tube of lubricant (not shown)

No. 113-1087 Left-hand

No. 113-1086 Right-hand



STEM ASSEMBLY KITS

- For faucets with 3/4" stem assemblies

No. 113-1088 Right

No. 113-1089 Left



HANDLE

No. 113-1023

- Includes hot and cold index buttons and screw
- Chrome-plated brass
- Sold individually



4" WRIST BLADE

No. 113-1002

- Includes hot and cold index buttons and screw
- Chrome-plated brass
- Sold individually



SPOUT ACCESSORIES

- No. 106-1044** Hose adaptor
- No. 111-1028** Stream regulator
- No. 106-1043** Aerator



SPOUTS

No. 113-1058 6" spout

No. 113-1059 8" spout

No. 113-1060 10" spout

No. 113-1061 12" spout

No. 113-1062 14" spout

No. 113-1063 Swivel gooseneck spout

No. 113-1057 Spout O-ring



SPOUT ADAPTORS

- No. 113-1021** Fisher spout thread female inlet to 3/8" NPT female outlet
 - Converts swing spout to a rigid spout
- No. 113-1022** 3/8" NPT male inlet to Fisher spout thread male outlet
 - Converts rigid spout to swing spout
- No. 113-1080** 7/2" double-jointed spout adaptor
 - Converts spout to double-jointed spout

PARTS FOR FISHER FAUCETS

REPAIR KIT

No. 113-1076

- For Fisher faucets, glass fillers, and spray valves
- Kit Includes: 2 each of spray nozzles,
2 each black bumpers;
6 each of handle gaskets,
6 each of check valve springs,
6 each of duck stem gaskets,
6 each of hard $\frac{1}{4}$ " seat washers,
6 each of soft $\frac{1}{4}$ " seat washers,
6 each of squeeze lever screws,
6 each of seat washer screws,
6 each of spray valve springs,
6 each of spout O-rings,
6 each of lift pins with O-rings,
6 each of aqua flow lubricants



YOU TALK, WE LISTEN

We value your opinion.
It is the foundation of our business.
If you ever have any questions,
concerns, or feedback, please call
us. Our staff and management
are prepared to listen to you
at any time. We want your
relationship with FMP to be as
easy and profitable as possible.



WALL ADAPTOR ELBOW

No. 113-1083

- Use to connect wall mount faucet or pre-rinse to supply line*
- Will fit within a standard 2" backsplash
- $\frac{1}{2}$ " NPT female inlet and outlet
- Brass

* $\frac{1}{2}$ " NPT nipple kits (Nos. 117-1137, 117-1009)
may be required with most wall mounted faucet
and pre-rinse applications.

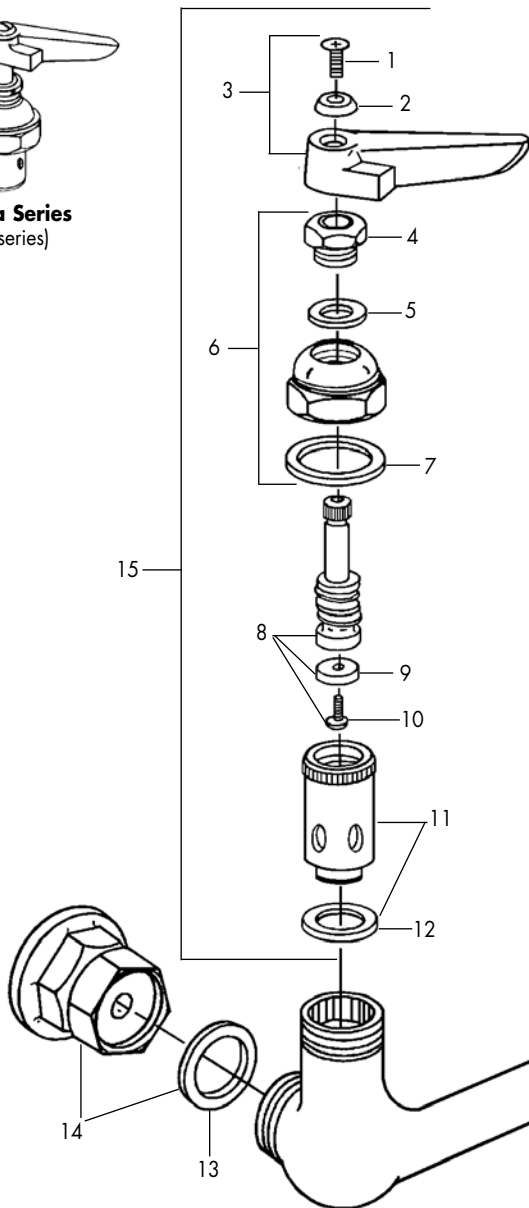


SUPPLY LINE

No. 113-1084

- 36" long, braided stainless steel
- $\frac{1}{2}$ " NPT female x $\frac{1}{2}$ " NPT male fittings

PARTS FOR T&S BRASS FAUCETS



ETERNA SERIES FAUCET STEM ASSEMBLY PARTS

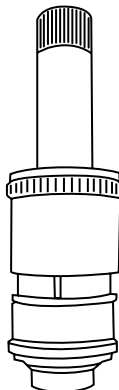
REF No.	ITEM No.	DESCRIPTION
1.	111-1094	Screw
2.	111-1071	Cold index button
2.	111-1072	Hot index button
3.	111-1147	Cold handle assembly
3.	111-1075	Hot handle assembly
4.	111-1114	Packing nut
5.	111-1113	Packing
6.	111-1106	Bonnet assembly
7.	111-1134	Bonnet gasket
8.	111-1136	Cold stem assembly
8.	111-1080	Hot stem assembly
9.	111-1085	Seat washer
10.	111-1091	Seat washer screw
11.	111-1135	Cold insert
11.	111-1178*	Cold insert (Monel seat)
11.	111-1133	Hot insert
11.	111-1179*	Hot insert (Monel seat)
12.	111-1132	Seat gasket
13.	111-1079	Washer
14.	111-1084	Coupling flange
15.	111-1090	Eterna cold stem assembly (full-turn)
15.	111-1092	Eterna hot stem assembly (full-turn)

* Monel seat can withstand higher temperatures
and hard water



SLOW-CLOSING STEM ASSEMBLIES

- No. 111-1104** Cold
- No. 111-1105** Hot
- Fits all Eterna models
- No. 111-1177** Spanner bit (not shown)
- Size #8



CERAMA CARTRIDGES

- No. 111-1169** Ceramic hot stem assembly
- No. 111-1170** Ceramic cold stem assembly
- No. 111-1171** Ceramic hot stem assembly with check valve
- No. 111-1172** Ceramic cold stem assembly with check valve

REPAIR KIT FOR ETERNA FULL-TURN STEM ASSEMBLIES

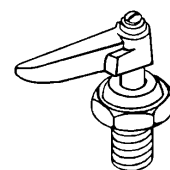
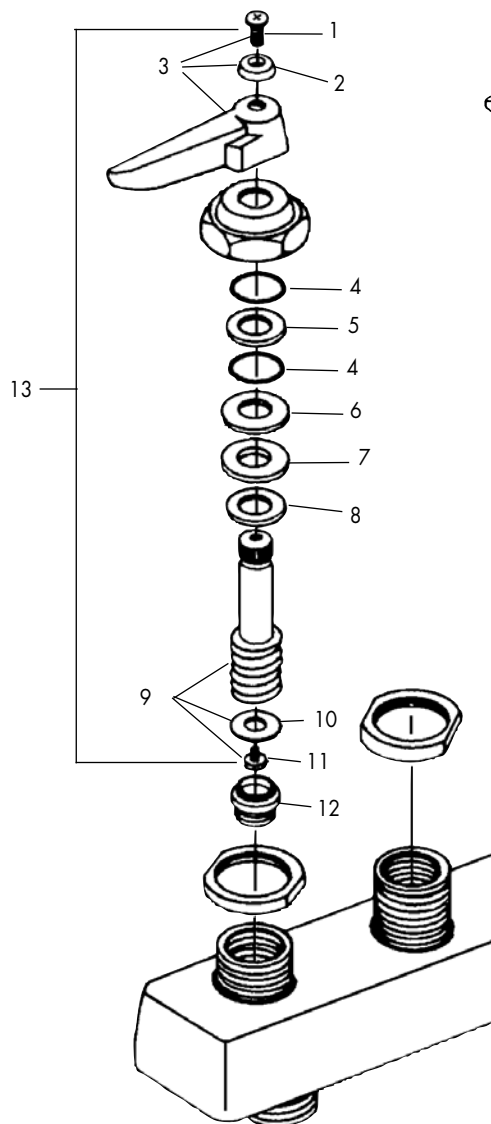
No. 111-1049

- Kit includes: 1 each cold spindle,
1 each hot spindle,
1 each removable hot insert,
1 each removable cold insert;
4 each seat screws,
6 each Teflon® packings;
10 each seat gaskets,
12 each bonnet gaskets;
22 each seat washers

PARTS FOR T&S BRASS FAUCETS

1100 SERIES FAUCET FULL-TURN STEM PARTS

REF No.	ITEM No.	DESCRIPTION
1.	111-1094	Screw
2.	111-1071	Cold index button
2.	111-1072	Hot index button
3.	111-1147	Cold handle assembly
3.	111-1075	Hot handle assembly
4.	111-1162	O-ring
5.	111-1163	Washer
6.	111-1145	Stainless steel washer
7.	111-1143	Rubber washer
8.	111-1139	Brass washer
9.	111-1067	Cold stem
9.	111-1137	Hot stem
10.	111-1085	Seat washer
11.	111-1091	Seat washer screw
12.	111-1111	Removable seat
13.	111-1099	Cold stem assembly
13.	111-1098	Hot stem assembly



1100 Series



HANDLES

- Fits either Eterna or 1100 series faucet stems
- Sold individually

REF

No.	ITEM No.	DESCRIPTION
14	111-1107	Cross handle
15	111-1030	4" wrist blade
15	111-1031	6" wrist blade



INDEX BUTTONS FOR WRIST BLADE HANDLES

- For wrist blade handles (Nos. 111-1030 and 111-1031)

No. 111-1173	Cold water (blue)
No. 111-1174	Hot water (red)



REPAIR KIT FOR FULL-TURN 1100 SERIES FAUCETS

No. 111-1040

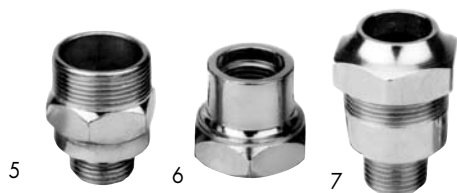
- Kit includes 1 each: cold spindle, hot spindle; 2 each: rubber bonnet washers, stainless steel bonnet washers, brass bonnet washers, swivel piece O-rings; 4 each: seat washer screws, and seat washers

PARTS FOR T&S BRASS FAUCETS



SPOUT ACCESSORIES

1. **No. 111-1028** Stream tip
2. **No. 106-1044** Hose adaptor
3. **No. 106-1043** Aerator
 - Fits T&S spouts with male thread
4. **No. 111-1029** Aerator
 - Fits T&S spouts with $\frac{3}{8}$ " NPT female thread



SPOUT ADAPTORS

5. **No. 111-1042** Spout adaptor
 - $\frac{3}{8}$ " NPT rigid spout to swing spout
6. **No. 111-1043** Spout adaptor
 - Swing spout to $\frac{3}{8}$ " NPT rigid spout
7. **No. 111-1044** Spout adaptor
 - Converts a $\frac{3}{8}$ " NPT rigid gooseneck to a swivel spout



SPOUTS

- No. 111-1148** 6" spout
No. 111-1142 8" spout
No. 111-1055 10" spout
No. 111-1060 12" spout
No. 111-1065 14" spout
No. 111-1081 18" spout
No. 111-1077 18" double-jointed spout
No. 111-1078 18" double-jointed spout with shut-off on nozzle
No. 111-1051 Rigid gooseneck spout
No. 111-1052 Swivel gooseneck spout

SPOUT PARTS (not shown)

- No. 111-1069** Spout O-ring
No. 111-1127 Spout washer



REPLACEMENT ON/OFF NOZZLE CONTROL

No. 110-1111

- For use on T&S double-jointed faucets

FAUCET INLET NIPPLE AND LOCK NUT

- Converts faucets from female to male inlets
- $\frac{1}{2}$ " NPS x 2" L
- Brass

- No. 106-1027** Inlet nipple
No. 117-1023 $\frac{1}{2}$ " NPS lock nut

KITS



UNIVERSAL REPLACEMENT CROSS HANDLE KIT

No. 106-1051

- Set screw holds handle snug
- Kit includes cold and hot handles



UNIVERSAL REPLACEMENT CANOPY HANDLE KIT

No. 106-1052

- Set screw holds handle snug
- Kit includes cold and hot handles and all necessary hardware

KITS



FAUCET WASHER KIT

No. 106-1054

- Kit includes: 36 assorted flat and beveled neoprene washers and 9 screws



DECK MOUNT KIT

No. 117-1137

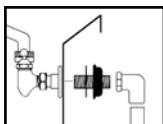
- For simple installation of deck faucets and pre-rinses
- Converts female inlets to male
- Kit includes: 2 each of 1/2" NPS x 2" long nipples, washers, and lock nuts



INLET NIPPLE KIT

No. 117-1009

- For installing faucets in a standard 2" backsplash
- Converts female inlets to male
- Kit includes: two 1/2" NPS x 1 1/2" brass nipples with lock nuts and washers; two 1/2" NPT x 1/2" sweat brass elbows



LARGE O-RING KIT

Packed in divider case with sizing guide
Kit includes: 380 O-rings in the following sizes:

No. 142-1124

QTY.	ID	OD	THICKNESS
20	1/8"	1/4"	1/16"
20	5/32"	9/32"	1/16"
20	3/16"	5/16"	1/16"
20	7/32"	11/32"	1/16"
20	1/4"	3/8"	1/16"
20	5/16"	7/16"	1/16"
20	3/8"	1/2"	1/16"
13	3/8"	9/16"	3/32"
13	7/16"	5/8"	3/32"
13	1/2"	11/16"	3/32"
13	9/16"	3/4"	3/32"
13	5/8"	13/16"	3/32"
13	11/16"	7/8"	3/32"
13	3/4"	15/16"	3/32"
10	3/4"	1"	1/8"
10	13/16"	1 1/16"	1/8"
10	7/8"	1 1/8"	1/8"
10	15/16"	1 3/16"	1/8"
10	1"	1 1/4"	1/8"
10	1 1/16"	1 5/16"	1/8"
10	1 1/8"	1 3/8"	1/8"
10	1 3/16"	1 7/16"	1/8"
10	1 1/4"	1 1/2"	1/8"
10	1 5/16"	1 9/16"	1/8"
10	1 3/8"	1 5/8"	1/8"
10	1 7/16"	1 11/16"	1/8"
10	1 1/2"	1 3/4"	1/8"
7	1 1/2"	1 7/8"	3/16"
7	1 5/8"	2"	3/16"
7	1 3/4"	2 1/8"	3/16"



SMALL O-RING KIT

No. 142-1125

- Packed in divider case with sizing guide
- Kit includes: 200 O-rings in popular sizes from 3/8" OD to 1 1/8" OD



SINK DRAIN PIPE INSTALLATION KIT by ZURN®

No. 117-1291

- For hand sink plumbing installation
- Kit includes: 1 1/4" drain with a 6" extension pipe
1 1/4" P-type trap with a clean-out
Two 1/2" IPS x 1/2" compression water valves with tubing
Protective pipe cover for drain and water valves
- Zurn no. Z9901-000-77-24-5



FAUCET SEAT KIT

No. 117-1002

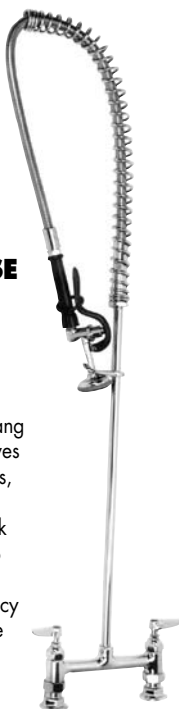
- Kit includes: 100 assorted brass seats
- Plastic case

DECK MOUNT PRE-RINSES

ENCORE® PRE-RINSE by CHG

No. 107-1065

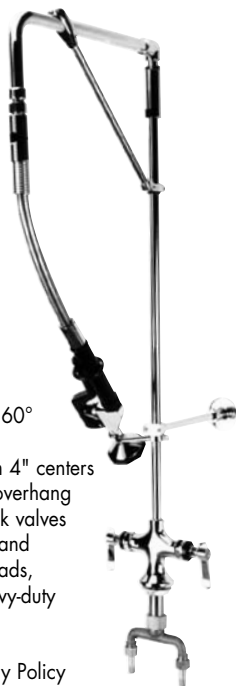
- 1/2" NPT female inlets on 8" centers
- 40" high with a 15" overhang
- Contains internal check valves
- Includes two 1/2" NPT nipples, 2 steel washers, 2 rubber washers, and 2 flanged lock nuts to adapt faucet base to 1/2" NPT female inlets
- Conforms to the Energy Policy Act of 2005 when using the included water-saving spray face
- Chrome-plated brass



ENCORE SWIVEL ARM PRE-RINSE by CHG

No. 107-1073

- Swivel arm allows a 360° rotation
- 1/4" NPT male inlets on 4" centers
- 33" high with a 12" overhang
- Contains internal check valves
- Includes water-saving and conventional spray heads, wall bracket, and heavy-duty swivel arm bracket
- Chrome-plated brass
- Conforms to the Energy Policy Act of 2005 when using the included water-saving spray face



PRE-RINSE by FISHER

No. 112-1007

- 1 1/16" OD x 2" center shank
- Two 16" long flexible braided steel inlets
- Two 3/8" OD compression x 1/2" male NPT adaptor
- 35" high with a 12" overhang
- Contains internal check valves
- 1.15 GPM
- Conforms to the Energy Policy Act of 2005
- Chrome-plated brass
- Wall mount bracket
- Fisher 2110 series



ENCORE® PRE-RINSE by CHG

No. 107-1060

- 1/4" NPT male inlets on 4" centers
- 1 1/8" OD x 2 1/4" shank
- 40" high with a 15" overhang
- Contains internal check valves
- Conforms to the Energy Policy Act of 2005 when using the included water-saving spray face
- Chrome-plated brass



PRE-RINSE by CHICAGO

No. 114-1005

- 1/4" NPT male inlets on 4" centers
- 1 1/8" OD x 2 1/4" shank
- 44" high
- Contains internal check valves
- 1.25 GPM
- Conforms to the Energy Policy Act of 2005
- Chrome-plated brass
- Chicago no. 919



LOW-FLOW PRE-RINSE by T&S BRASS

No. 110-1121

- 45" high with a 14" overhang
- Two 1/2" NPT x 20" braided steel supply lines
- Contains internal check valves
- 1.2 GPM
- Pre-assembled with Easy-Install® fitting and locking nut
- T&S no. B0113C



Many items on this page are available
Lead-free Compliant.

Ask us about the item you need.

DECK MOUNT PRE-RINSES

by T&S BRASS

PRE-RINSE

No. 110-1073

- 1/2" NPT female inlets on 8" centers
- 40" high with a 15" overhang
- Pre-assembled with Easy-Install® fitting and locking nut
- Contains internal check valves
- 1.42 GPM
- Conforms to the Energy Policy Act of 2005
- Chrome-plated brass
- T&S no. B123



PRE-RINSE

No. 110-1070

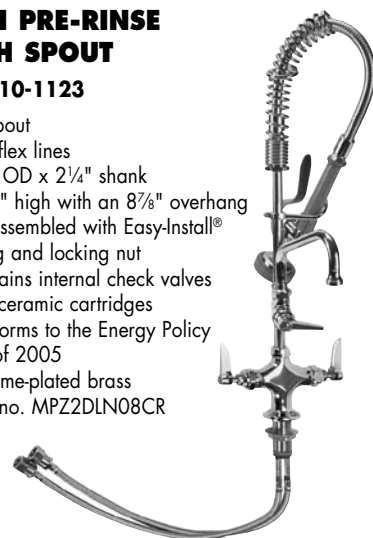
- 18" flex lines
- 1 1/8" OD x 2 1/4" shank
- 40" high with a 15" overhang
- Pre-assembled with Easy-Install® fitting and locking nut
- Contains internal check valves
- 1.42 GPM
- Conforms to the Energy Policy Act of 2005
- Chrome-plated brass
- T&S no. B113



MINI PRE-RINSE WITH SPOUT

No. 110-1123

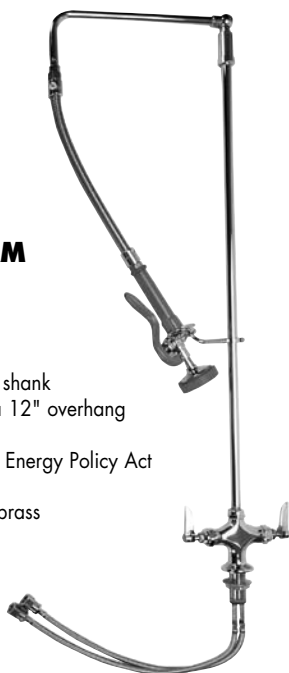
- 8" spout
- 18" flex lines
- 1 1/8" OD x 2 1/4" shank
- 24 1/2" high with an 8 7/8" overhang
- Pre-assembled with Easy-Install® fitting and locking nut
- Contains internal check valves and ceramic cartridges
- Conforms to the Energy Policy Act of 2005
- Chrome-plated brass
- T&S no. MPZ2DLN08CR



SWIVEL ARM PRE-RINSE

No. 110-1071

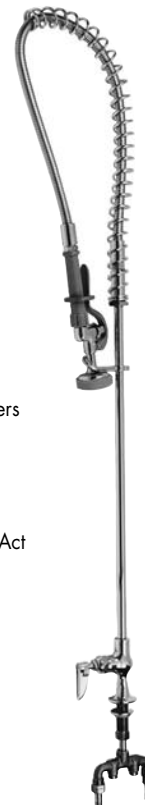
- 20" flex lines
- 1 1/8" OD x 2 1/4" shank
- 39" high with a 12" overhang
- 1.42 GPM
- Conforms to the Energy Policy Act of 2005
- Chrome-plated brass
- T&S no. B111



PRE-RINSE

No. 110-1074

- 1/4" NPT male inlets on 4" centers
- 1/2" NPS x 2 1/4" shank
- 40" high with a 15" overhang
- Contains internal check valves
- 1.42 GPM
- Conforms to the Energy Policy Act of 2005
- Chrome-plated brass
- T&S no. B173



Many items on this page are available
Lead-free Compliant.

Ask us about the item you need.

WALL MOUNT PRE-RINSES

ECONOMY PRE-RINSE

No. 107-1078

- ½" NPT female inlet on 8" centers
- Contains check valves in wall flange coupling
- Conforms to the Energy Policy Act of 2005 when using the included water-saving spray face
- Chrome-plated brass

No. 106-1020 Replacement stem assemblies kit

ENCORE® PRE-RINSE by CHG

No. 107-1061

- ½" NPT female inlets on 8" centers
- 34" high with a 15" overhang
- Contains internal check valves
- Conforms to the Energy Policy Act of 2005 when using the included water-saving spray face
- Chrome-plated brass

ENCORE® SWIVEL ARM PRE-RINSE by CHG

No. 107-1074

- Swivel arm allows a 360° rotation
- ½" NPT male inlets on 8" centers
- 34" high with a 12" overhang
- Contains internal check valves
- Includes water-saving and conventional spray heads, wall bracket, and heavy-duty swivel arm bracket
- Conforms to the Energy Policy Act of 2005 when using the included water-saving spray face
- Chrome-plated brass

PRE-RINSE by FISHER

No. 112-1001

- ½" NPT female inlet
- 35" high with a 15" overhang
- Contains internal check valves
- 1.6 GPM
- Conforms to the Energy Policy Act of 2005
- Chrome-plated brass
- Fisher no. 2710

WATER-SAVING PRE-RINSE by FISHER

No. 112-1010

- ½" NPT female inlets on 8" centers
- 36" high with a 12" overhang
- 1.6 GPM
- Contains internal check valves
- Conforms to the Energy Policy Act of 2005
- Includes EZ Install inlet adaptor kit, a wall bracket (No. 113-1029), and 2 EZ Install adaptors to retrofit for Chicago, Encore, and Krowne
- Chrome-plated brass
- Fisher nos. 2210, 29459



Many items on this page are available
Lead-free Compliant.

Ask us about the item you need.

WALL MOUNT PRE-RINSES by T&S BRASS

PRE-RINSE

No. 110-1072

- ½" NPT female inlets on 8" centers
- 34" high with a 15" overhang
- Pre-assembled with Easy-Install® fitting and locking nut
- Contains internal check valves
- 1.42 GPM
- Conforms to the Energy Policy Act of 2005
- Chrome-plated brass
- T&S no. B133



SWIVEL ARM PRE-RINSE

No. 110-1110

- ½" NPT female inlets on 8" centers
- 34" high with a 15" overhang
- Contains internal check valves
- 1.42 GPM
- Conforms to the Energy Policy Act of 2005
- Chrome-plated brass
- T&S no. B131

MINI PRE-RINSE WITH SPOUT

No. 110-1124

- 8" spout
- ½" NPT female inlets on 8" centers
- 21¾" high with an 8⅞" overhang
- Pre-assembled with Easy-Install® fitting and lock nut
- Contains internal check valves and ceramic cartridges
- Conforms to the Energy Policy Act of 2005
- Chrome-plated brass
- T&S no. MPZ8WLN068CR



PRE-RINSE WITH CONCEALED MOUNTINGS

No. 110-1076

- ½" NPT female inlets on 4" centers
- 34" high with a 15" overhang
- 1.42 GPM
- Conforms to the Energy Policy Act of 2005
- Chrome plated brass
- T&S no. B163



LOW-FLOW PRE-RINSES by T&S BRASS

No. 110-1122

- ½" NPT female inlets on 8" centers
- 34" high with a 15" overhang
- Pre-assembled with Easy-Install® fitting and locking nut
- Contains internal check valves
- 1.2 GPM
- Chrome-plated brass
- T&S no. B0133C



Many items on this page are available
Lead-free Compliant.

Ask us about the item you need.

HOSE REELS



RETRACTABLE HOSE REEL by FISHER

No. 112-1003

- Covered reel with 30' hose and spray valve
- 1.15 GPM
- ½" NPT female inlet
- 4½" x 7" mounting plate screw centers
- 15½" reel diameter
- 17" projection
- Stainless steel outer cover
- Fisher no. 2985

REPLACEMENT PARTS

- No. 113-1074** 30' hose
No. 113-1001 Black handle



RETRACTABLE HOSE REEL by T&S BRASS

No. 110-1001

- Covered reel with 30' hose
- ¾" NPT female inlet
- 5½" x 6¾" mounting plate
- Includes spray valve
- 1.42 GPM
- 14¼" reel diameter
- 15½" projection
- Conforms to the Energy Policy Act of 2005
- T&S Brass nos. B1400, B7222C01

REPLACEMENT PARTS

- No. 111-1016** 35' hose
No. 111-1130 Gray handle
No. 111-1032* Spray valve
* Conforms to the Energy Policy Act of 2005



RETRACTABLE HOSE REEL

No. 110-1125

- Exposed reel with 50' hose and spray valve
- ¾" NPT female inlet
- 19½" diameter of reel
- Hose rating 300 PSI maximum, 176°F maximum
- Includes wall mounting bracket
- Black powder-coated steel

WALL MOUNT UTILITY SPRAYS



ENCORE® TAMPERPROOF SPRAY ASSEMBLY by CHG

No. 107-1076

- Designed for prison applications
- ½" NPT female inlets on 8" centers
- 72" stainless steel quick disconnect hose
- Quarter-turn full volume valves
- Includes plastic-coated wall hook
- Tamperproof screws throughout
- Conforms to the Energy Policy Act of 2005 when using the included water-saving spray face



WALL MOUNT FAUCET AND SPRAY ASSEMBLY by T&S BRASS

No. 110-1080

- ½" NPT female inlets on 8" centers
- 12" spout and 96" stainless steel hose
- Contains internal check valves
- 1.42 GPM
- Conforms to the Energy Policy Act of 2005
- Chrome-plated brass
- T&S no. B175

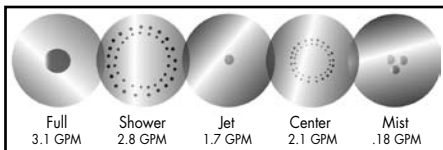
PARTS & ACCESSORIES FOR CHG ENCORE® PRE-RINSES



SELECT-A-SPRAY™ ADJUSTABLE SPRAY HEAD

No. 106-1165

- 5 different spray patterns to choose from: Full, Shower, Jet, Center, or Mist
- Fits standard pre-rinse hose



PRE-RINSE HOSES WITH HANDLES

- Black plastic handle and all necessary washers included
- Built-in stress reducing spring for greater durability
- Strong, flexible stainless steel outer casing over a reinforced radial design rubber core

No. 106-1078 44" long

No. 106-1151 60" long

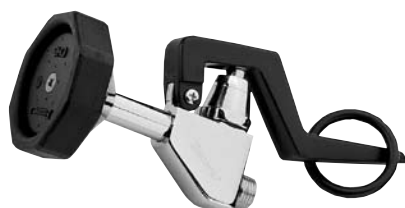
No. 106-1152 72" long

No. 106-1153 96" long

No. 106-1099 Black plastic handle only

No. 106-1104 Teflon® washer only (not shown)

- For use between spring body adaptor and hose, and between hose and handle



PRE-RINSE SPRAY VALVE

No. 106-1077

- Fits standard pre-rinse hose
- 1.6 GPM



ANGLED PRE-RINSE SPRAY VALVE

No. 106-1156

- Fits standard pre-rinse hose
- 3.2 GPM

SWIVEL JOINT

No. 106-1164

- For swivel arm pre-rinse
- 2½" L x 1½" W



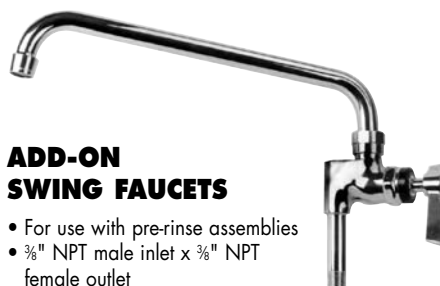
ADD-ON SWING FAUCETS

- For use with pre-rinse assemblies
- ¾" NPT male inlet x ¾" NPT female outlet
- "No splash" aerator included

No. 107-1064 6" spout

No. 107-1063 16" spout

No. 107-1062 12" spout



POT FILLER VALVE

No. 106-1157

- Fits standard pre-rinse hose



WATER SAVER SPRAY FACE

No. 106-1158

- Replaces standard spray face to save water and energy
- For pre-rinse spray valve
- 1.6 GPM
- Knife spray pattern

Note: Conforms to the Energy Policy Act of 2005 and the ASTM F-2324 standard for water conservation.

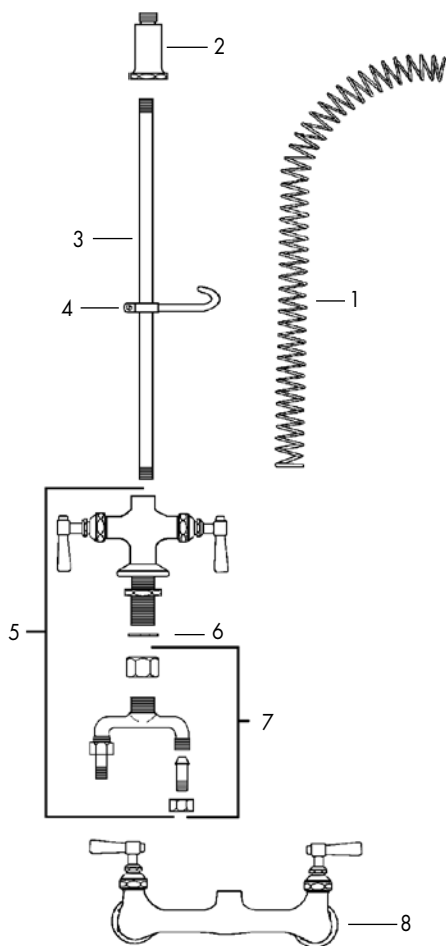


WALL HOOK

No. 106-1154

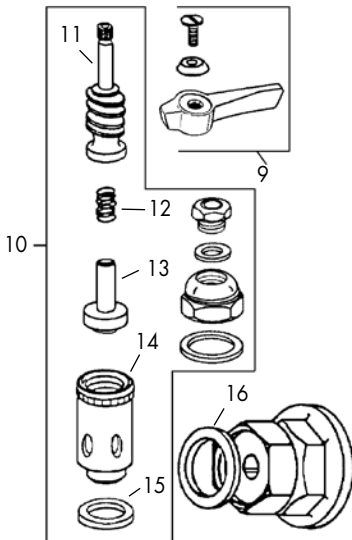
- Permits spray valve or pot filler valve to be conveniently hung in place when not in use
- Chrome-plated base with vinyl-coated hook

PARTS & ACCESSORIES FOR CHG ENCORE PRE-RINSES



PRE-RINSE PARTS

REF No.	ITEM No.	DESCRIPTION
1.	111-1087	Spring
2.	111-1101	Spring body
3.	106-1120	18" riser tube
4.	106-1100	24" riser tube
5.	106-1121	Deck mount faucet base
6.	106-1105	Washer
7.	106-1122	Spreader assembly
8.	106-1127	Wall mount faucet base



PRE-RINSE FULL-TURN STEM PARTS

REF No.	ITEM No.	DESCRIPTION
9.	106-1147	Cold/hot handle assembly
10.	106-1123	Cold stem assembly (full-turn)
10.	106-1124	Hot stem assembly (full-turn)
11.	106-1108	Cold stem
11.	106-1112	Hot stem
12.	106-1109	Spring
13.	106-1110	Brass backcheck with seat washer and screw
14.	106-1111	Cold removable insert
14.	106-1113	Hot removable insert
15.	106-1129	Teflon® seat gasket
16.	106-1128	Coupling flange washer

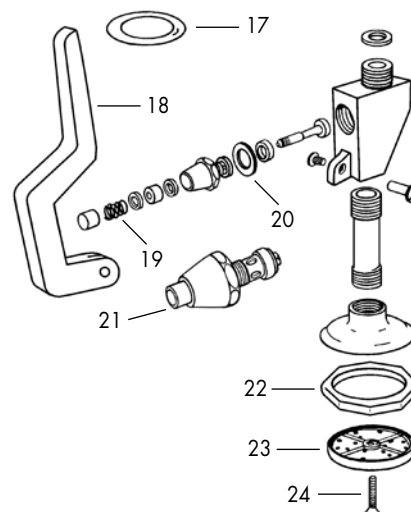


QUARTER-TURN STEM ASSEMBLIES

- Can be used to retrofit existing full-turn faucets

No. 106-1162 Cold

No. 106-1163 Hot



SPRAY VALVE PARTS

REF No.	ITEM No.	DESCRIPTION
17.	106-1091	Hold-down ring
18.	106-1090	Squeeze valve handle (includes screw and barrel nut)
19.	111-1064	Bonnet spring
20.	111-1054	Binding washer
21.	106-1155	Button valve assembly
22.	106-1115	Rubber ring
23.	106-1130	Spray face (black)
24.	111-1089	Spray face screw



WALL BRACKET

No. 106-1076

- Can be cut to mount a pre-rinse from 2" to 12" from the wall

PARTS & ACCESSORIES FOR CHG ENCORE PRE-RINSES



4" WRIST BLADE SET AND COVER



- No. 106-1136** Wrist blades only
 - For new 20-tooth spline design
 - Treated with Saniguard® antimicrobial coating
 - Includes index buttons and screws
 - Chrome-plated brass
- No. 106-1173** Handle cover only
 - Sold individually



FAUCET HANDLE REPAIR KIT

No. 106-1147

- For Encore hot or cold water handle assemblies
- Kit includes: handle, blue index disk, red index disk, and handle screw
- Chrome-plated brass
- Sold individually



FULL-TURN FAUCET REPAIR KITS

- Kit includes 1 each: stem, removable insert, brass backcheck with seat washer and screw;
- 2 each: seat washers and seat washer screws;
- 3 each: packings, top gaskets, bottom gaskets, backcheck springs;
- 4 each: spout O-rings

No. 106-1145 Cold water valve

No. 106-1146 Hot water valve



ADJUSTABLE SUPPLY INLETS

Permits easy, fast installation by providing adjustability of different faucet or pre-rinse centers to match varying installation centers.

No. 106-1159

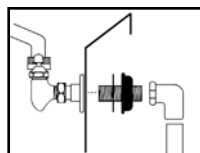
- 2" total range
- ½" NPT female inlets
- Chrome-plated brass
- Coupling flange washers included
- Includes deck mount kit (No. 117-1137)



INLET NIPPLE KIT

No. 117-1009

- For installing faucets in a standard 2" backsplash
- Converts female inlets to male
- Kit includes: two ½" NPS x 1½" brass nipples with lock nuts and washers, two ½" NPT x ½" sweat brass elbows



DECK MOUNT KIT

No. 117-1137

- For simple installation of deck faucets and pre-rinse
- Converts female inlets to male
- Kit includes: 2 each of ½" NPS x 2" long nipples, washers, and lock nuts

HOSE ADAPTOR

No. 106-1150

- Adapts CHG or T&S hose to Fisher spring body on top of the riser tube
- Chrome-plated brass



SWING TO RIGID SPOUT ADAPTOR

No. 106-1149

- Converts a standard swivel spout to a ¾" NPT riser pipe
- Chrome-plated brass



SPOUT ADAPTORS

- No. 106-1119** ¾" NPT female to spout thread
 - Spout can be added to the top of a riser pipe
- No. 106-1118** ¾" NPT male to spout thread
 - Spout can be added to a pre-rinse faucet base

WATTS BACKFLOW PREVENTER

No. 117-1052

- For use on bottom of pre-rinse riser tubes
- ¾" NPT male inlet
- ¾" NPT female outlet
- Rated 125 PSI for water
- Chrome-plated brass



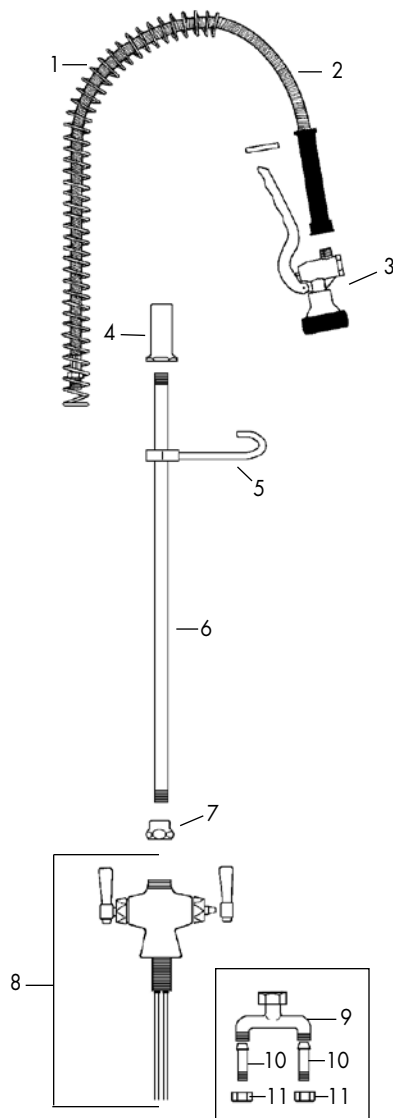
DOUBLE BACKFLOW PREVENTER

No. 113-1081

- For use between the pre-rinse hose and spray valve
- 2 check valves ensure safety in case one fails
- ¾-14 thread female inlet
- ¾-14 thread male outlet
- Chrome-plated brass



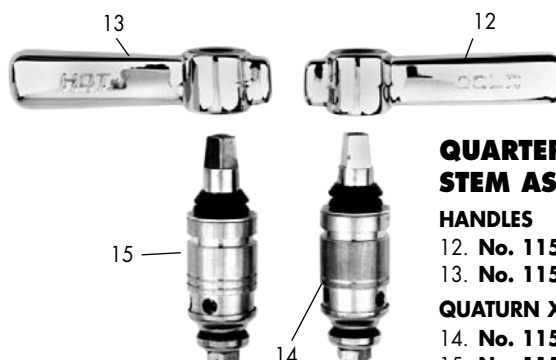
PARTS & ACCESSORIES FOR CHICAGO PRE-RINSES



PRE-RINSE PARTS

REF No.	ITEM No.	DESCRIPTION
1.	111-1087	Spring
2.	115-1031	44" hose with handle
3.	115-1030*	Spray valve
4.	115-1022	Spring body
5.	115-1019	Hook
6.	106-1100	24" riser tube
6.	111-1110	32" riser tube
7.	115-1028	Pre-rinse riser adaptor
8.	115-1023	Base faucet—includes two 3/8" OD x 12 1/4" threaded copper tubes
9.	115-1029	Mixing yoke
10.	115-1000	Tailpiece with check valve
11.	111-1151	Tailpiece nut

*Conforms to the Federal Energy Policy Act of 2005



QUARTER-TURN HANDLES AND STEM ASSEMBLIES

HANDLES

12. **No. 115-1013** Cold handle
13. **No. 115-1014** Hot handle

QUARTURN XT STEM ASSEMBLIES

14. **No. 115-1009** Cold—1 identifier ring
15. **No. 115-1008** Hot—2 identifier rings



"ADAPTA" FAUCET

No. 115-1004

- 9 1/2" spout
- 3/8" NPS female outlet
- Chrome-plated brass
- Chicago spout thread inlet
- Chicago no. 613A



4" WRIST BLADES

No. 115-1012



- Includes screws and index buttons
- Chrome-plated brass
- Sold by the pair



PRE-RINSE WALL BRACKET

No. 106-1076

- Can be cut to mount a pre-rinse 2" to 12" from the wall
- For 3/8" NPT riser pipe

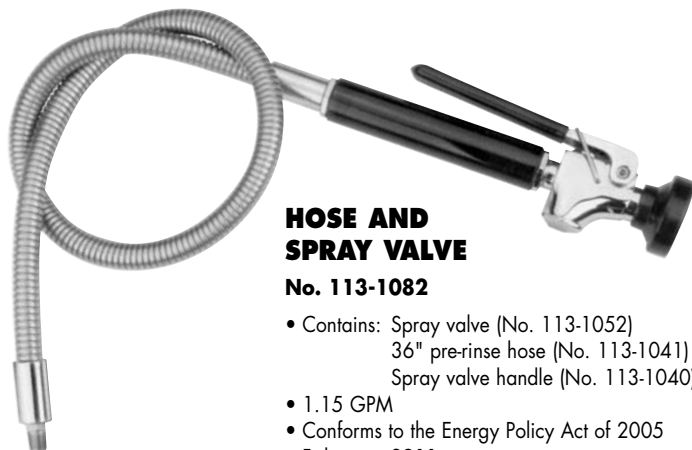


WATTS BACKFLOW PREVENTER

No. 117-1052

- For use on riser tubes of pre-rinse units
- 3/8" NPT male inlet
- 3/8" NPT female outlet
- Rated 125 PSI for water
- Chrome-plated brass

PARTS & ACCESSORIES FOR FISHER PRE-RINSES



HOSE AND SPRAY VALVE

No. 113-1082

- Contains: Spray valve (No. 113-1052)
36" pre-rinse hose (No. 113-1041)
Spray valve handle (No. 113-1040)
- 1.15 GPM
- Conforms to the Energy Policy Act of 2005
- Fisher no. 2911



POT FILLER VALVE

No. 113-1013

- Fisher no. 2921



WATER-SAVING SPRAY VALVE

No. 113-1052

- Conserves water and saves energy
- 1.15 GPM
- Conforms to the Energy Policy Act of 2005
- Fisher no. 2949



PRE-RINSE HOSES

No. 113-1043 18" hose

No. 113-1041 36" hose

No. 113-1042 60" hose



BRUSH ATTACHMENT

No. 113-1054

- For new style spray valves
- Used on Fisher spray valves with 2" OD bumpers



ADAPTORS

No. 113-1047 Adapts Fisher hose to T&S spray valve handle

No. 113-1046 Adapts Fisher hose to T&S spring body



JET SPRAY VALVE

No. 113-1051

- Ideal for wash-down and clean-up use
- 1.15 GPM
- Fisher nos. 2938, 10863



HANDLE WITH GASKETS

No. 113-1040

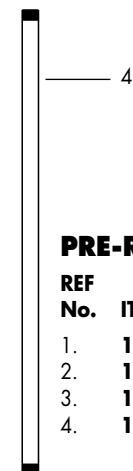
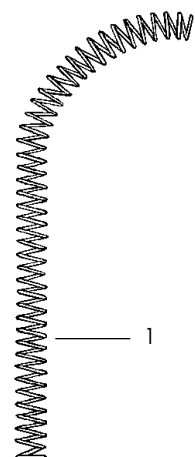


GASKET

No. 113-1091

- For all Fisher pre-rinse handles, hoses, and spray valves

PARTS & ACCESSORIES FOR FISHER PRE-RINSES



PRE-RINSE PARTS

REF No.	ITEM No.	DESCRIPTION
1.	111-1087	Spring
2.	113-1048	Hook
3.	113-1049	Spring body
4.	113-1050	Riser—21 $\frac{3}{4}$ "

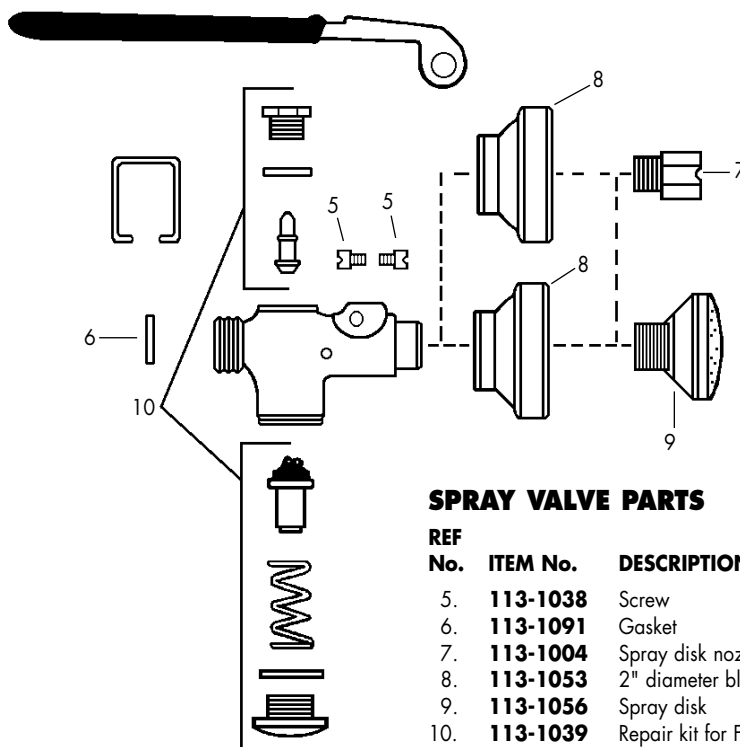


STEM ASSEMBLIES

- Comes with hot and cold index buttons, handle, screw, and bonnet
- $\frac{1}{2}$ " NPT stem assembly
- Includes internal check valves

No. 113-1024 Left-hand

No. 113-1025 Right-hand



SPRAY VALVE PARTS

REF No.	ITEM No.	DESCRIPTION
5.	113-1038	Screw
6.	113-1091	Gasket
7.	113-1004	Spray disk nozzle
8.	113-1053	2" diameter black bumper
9.	113-1056	Spray disk
10.	113-1039	Repair kit for Fisher spray valves



HANDLE

No. 113-1023

- Comes with hot and cold index buttons and screw
- Chrome-plated brass
- Sold individually



WALL MOUNT BASE FAUCET

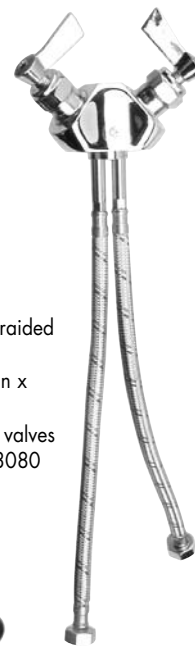
No. 113-1028

- 8" centers
- $\frac{1}{2}$ " NPT female inlets
- $\frac{3}{8}$ " NPT female outlet
- Includes internal check valves
- Fisher no. 2200CV

DECK MOUNT BASE FAUCET

No. 113-1026

- $\frac{3}{8}$ " NPT female outlet
- 1 $\frac{1}{16}$ " OD x 2" shank
- Two 16" long flexible braided steel inlets
- Two $\frac{3}{8}$ " OD compression x $\frac{1}{2}$ " male NPT adaptor
- Contains internal check valves
- Fisher nos. 2100CV, 13080



4" WRIST BLADE

No. 113-1002

- Comes with hot and cold index buttons
- Chrome-plated brass
- Sold individually



PARTS & ACCESSORIES FOR FISHER PRE-RINSES



ADD-ON PRE-RINSE FAUCETS

- Can be used with most pre-rinse assemblies
- $\frac{3}{8}$ " NPT male inlet x $\frac{3}{8}$ " NPT female outlet
- Chrome-plated brass
- Fisher 2901 series

No. 112-1013 6" spout

No. 112-1012 12" spout

No. 113-1086 Replacement stem assembly only



GOOSENECK SWIVEL

No. 113-1090

- For use on swivel pre-rinse
- Can also convert a standard pre-rinse into a swivel
- Chrome-plated brass
- Fisher no. 2011-0000

WATTS BACKFLOW PREVENTER

No. 117-1052

- For use on bottom of pre-rinse riser tubes
- $\frac{3}{8}$ " NPT male inlet
- $\frac{3}{8}$ " NPT female outlet
- Rated 125 PSI for water
- Chrome-plated brass



WALL ADAPTOR ELBOW

No. 113-1083

- Use to connect wall mount faucet or pre-rinse to supply line*
- Will fit within a standard 2" backsplash
- $\frac{1}{2}$ " NPT female inlet and outlet
- Brass

* $\frac{1}{2}$ " NPT nipple kits (Nos. 117-1137, 117-1009) may be required with most wall mounted faucet and pre-rinse applications.



SPOUT ADAPTORS

- No. 113-1021** Fisher spout thread female inlet to $\frac{3}{8}$ " NPT female outlet
 - Converts faucet base to pre-rinse
- No. 113-1022** $\frac{3}{8}$ " NPT male inlet to Fisher spout thread male outlet
 - Converts pre-rinse base to faucet base



SUPPLY LINE

No. 113-1084

- 36" long, braided stainless steel
- $\frac{1}{2}$ " NPT female x $\frac{1}{2}$ " NPT male fittings



WALL BRACKET

No. 113-1029

- For $\frac{3}{8}$ " NPT riser pipe
- Adjustable from 2 $\frac{1}{4}$ " to 12"
- Adjustment is measured from wall to center line of riser



DOUBLE BACKFLOW PREVENTER

No. 113-1081

- For use between the pre-rinse hose and spray valve
- 2 check valves ensure safety in case 1 fails
- $\frac{3}{4}$ -14 thread female inlet
- $\frac{3}{4}$ -14 thread male outlet
- Chrome-plated brass



WALL HOOK

No. 113-1014

- For pre-rinse and pot hooks
- Chrome-plated brass with vinyl-coated hook

PARTS & ACCESSORIES FOR T&S BRASS PRE-RINSES



HOSE AND VALVE SPRAY

No. 110-1078

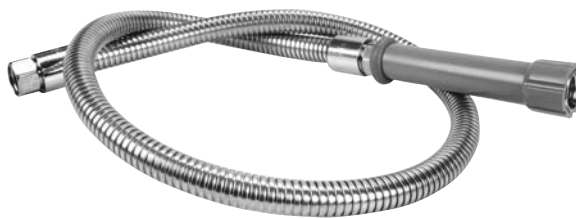
- 1/2" NPS male inlet
- 48" overall length
- Includes: Spray valve (No. 111-1032)
44" pre-rinse hose (No. 111-1045)
1/2" NPT adaptor fitting (No. 111-1124)
- 1.42 GPM
- Conforms to the Energy Policy Act of 2005
- T&S Brass no. B100



HOSE AND WATER-SAVING SPRAY VALVE

No. 111-1165

- 1/2" NPS male inlet
- 48" overall length
- Includes: Water-saving spray valve (No. 111-1033)
44" pre-rinse hose (No. 111-1045)
1/2" NPT adaptor fitting (No. 111-1124)
- 1.24 GPM
- T&S Brass no. B100C



PRE-RINSE HOSES

- Includes gray handle and all necessary washers
- Overall length includes 8" gray handle

No. 111-1039 20" long

No. 111-1041 26" long

No. 111-1168 32" long

No. 111-1045 44" long

No. 111-1048 68" long

No. 111-1050 96" long

No. 111-1046 44" long with vacuum breaker
(not shown)

PARTS

No. 111-1100 Gray handle

No. 111-1097 Rubber washer (not shown)

- For use between spring body and adaptor
- For use between handle and valve
- 5/8" OD

No. 111-1093 Rubber washer (not shown)

- For use between spring body adaptor and hose
- For use between hose and handle
- 3/4" OD



PVC PRE-RINSE HOSE

No. 111-1154

- Braided, reinforced PVC covering
- 44" long
- Includes gray handle and all necessary washers



POT FILLER

No. 111-1096

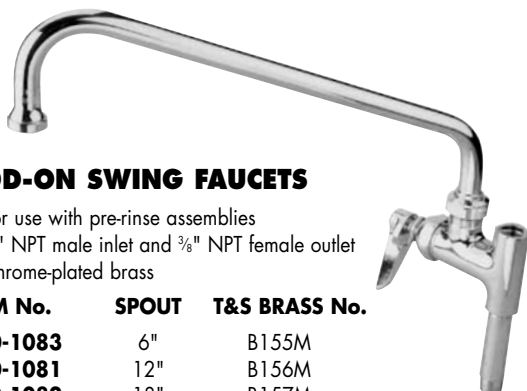
- Fits T&S Brass pre-rinse hose
- T&S Brass no. 2851-40 (old no. 26A)

PARTS & ACCESSORIES FOR T&S BRASS PRE-RINSES



SWIVELS

- No. 111-1088** Swivel arm assembly
 - For use on pre-rinses No. 110-1071 and No. 110-1110
 - 12" long
- No. 111-1103** Swivel adaptor
 - For use on faucet and spray assembly No. 110-1080.



ADD-ON SWING FAUCETS

- For use with pre-rinse assemblies
- $\frac{3}{8}$ " NPT male inlet and $\frac{3}{8}$ " NPT female outlet
- Chrome-plated brass

ITEM No.	SPOUT	T&S BRASS No.
110-1083	6"	B155M
110-1081	12"	B156M
110-1082	18"	B157M

No. 111-1090 Replacement stem assembly
No. 111-1175 EasyInstall® adaptor

PRE-RINSE SPRAY VALVE



No. 111-1182

- Conserves water and saves energy
- 1.48 GPM
- Conforms to the Energy Policy Act of 2005
- Built-in backflow prevention
- T&S Brass no. B0108



WATER-SAVING SPRAY VALVE

No. 111-1033

- Conserves water and saves energy
- 1.24 GPM
- Conforms to the Energy Policy Act of 2005 and the ASTM F-2324 standard for water conservation.
- T&S Brass no. B107C



No. 111-1095 Replacement shield for water-saving valves

ANGLED WATER-SAVING SPRAY VALVE

No. 111-1008

- Nozzle is at a 35° angle
- Conserves water and saves energy
- 1.24 GPM
- Conforms to the Energy Policy Act of 2005 and the ASTM F-2324 standard for water conservation
- T&S no. B107C35



No. 111-1095 Replacement shield for water-saving valves

SPRAY VALVE REPAIR KITS

No. 111-1034

- For spray valves (Nos. 111-1032 and 111-1159)
- Kit includes: 2 each: bonnet binding washers, bonnet springs, bonnet washers, hose washers, valve stems, packings, seat washers; contains 1 each: rubber ring, spray face, spray face screw
- Conforms to the Energy Policy Act of 2005
- T&S Brass no. B10K



BRUSH ATTACHMENT

No. 111-1021

- Fits spray valves (Nos. 111-1032 and 111-1159)
- Supplied with rubber collar and brush
- T&S no. BR10



STANDARD SPRAY VALVE

No. 111-1032

- 1.42 GPM
- Conforms to the Energy Policy Act of 2005
- T&S Brass no. B107



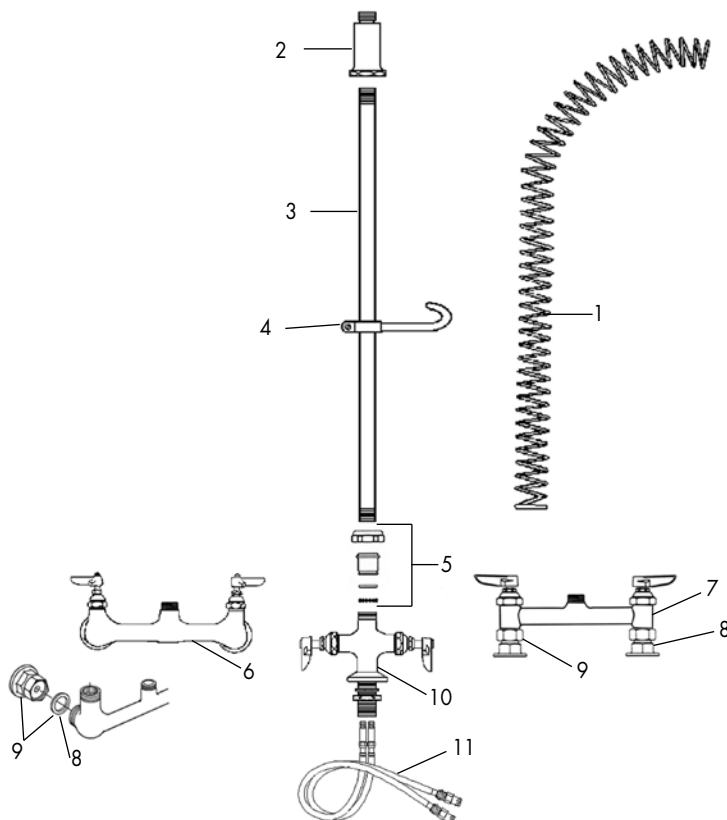
ANGLED STANDARD SPRAY VALVE

No. 111-1159

- Nozzle is at a 35° angle
- 1.42 GPM
- Conforms to the Energy Policy Act of 2005
- T&S nos. 25A, B-0107-035



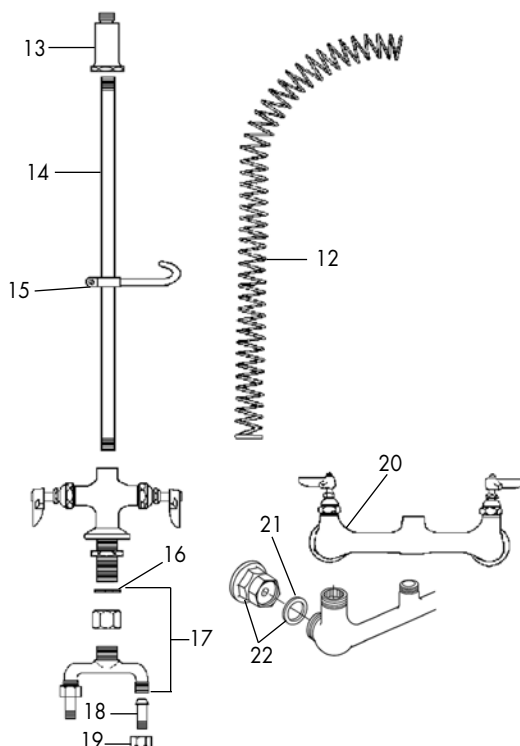
PARTS & ACCESSORIES FOR T&S BRASS PRE-RINSES



EASYINSTALL® PRE-RINSE ASSEMBLY PARTS

REF No.	ITEM No.	DESCRIPTION
1.	111-1087	Spring
2.	111-1101	Spring body
3.	106-1120	18" riser tube
3.	106-1100	24" riser tube
3.	111-1110	32" riser tube
4.	111-1119	Finger hook and screw
5.	111-1175	EasyInstall® adaptor
6.	111-1181	Wall mount base faucet with coupling
7.	111-1180	Deck mount base faucet with coupling
8.	111-1079	Washer
9.	111-1084	Coupling with washer
10.	111-1118*	Deck mount base faucet
11.	111-1183	Water inlet hoses (2)

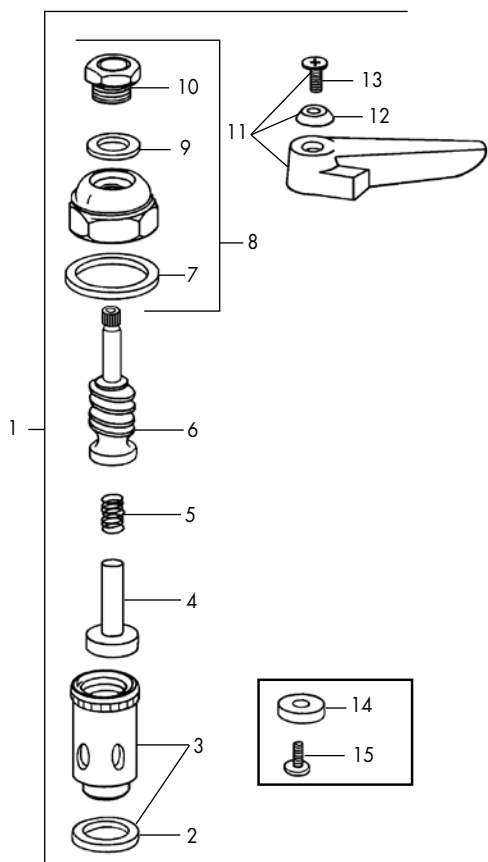
*This faucet uses water inlet hoses (No. 111-1183)



PRE-RINSE ASSEMBLY PARTS

REF No.	ITEM No.	DESCRIPTION
12.	111-1087	Spring
13.	111-1101	Spring body
14.	106-1120	18" riser tube
14.	106-1100	24" riser tube
14.	111-1110	32" riser tube
15.	111-1119	Finger hook and screw
16.	111-1063	Washer
17.	111-1083	Spreader assembly
18.	111-1150	Tailpiece
19.	111-1151	Tailpiece nut
20.	111-1121	Wall mount base faucet with coupling
21.	111-1079	Washer
22.	111-1084	Coupling with washer

PARTS & ACCESSORIES FOR T&S BRASS PRE-RINSES



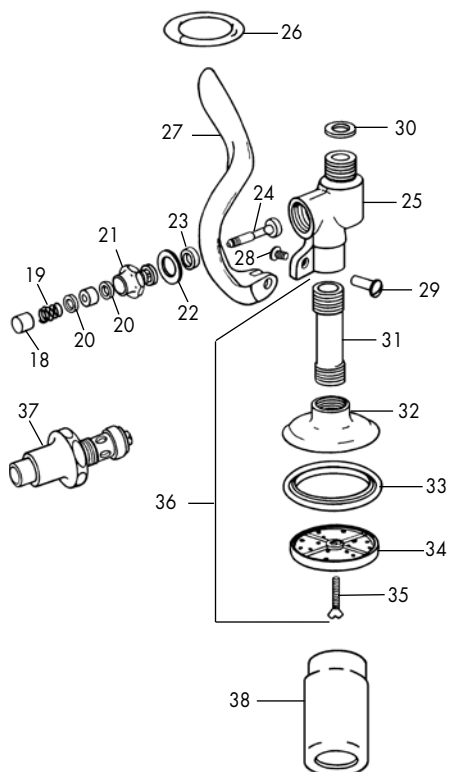
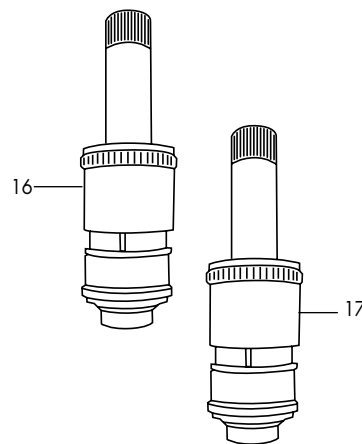
ETERNA PRE-RINSE STEMS AND PARTS

REF No.	ITEM No.	DESCRIPTION
1.	111-1146	Cold stem assembly (full-turn with check valve)
1.	111-1073	Hot stem assembly (full-turn with check valve)
2.	111-1132	Seat gasket
3.	111-1135	Cold insert
3.	111-1178**	Cold insert (Monel seat)
3.	111-1133	Hot insert
3.	111-1179**	Hot insert (Monel seat)
4.	111-1167	Spring check seat
5.	106-1109	Spring
6.	106-1108	Cold stem
6.	106-1112	Hot stem
7.	111-1134	Bonnet gasket
8.	111-1106	Bonnet
9.	111-1113	Packing
10.	111-1114	Packing nut
11.	111-1147	Cold handle assembly
11.	111-1075	Hot handle assembly
12.	111-1071	Cold index button
12.	111-1072	Hot index button
13.	111-1094	Handle screw
14.	111-1085	Seat washer-for older stems
15.	111-1091	Seat screw-for older stems

** Monel seat can withstand higher temperatures and hard water

CERAMIC CARTRIDGES WITH CHECK VALVES

REF No.	ITEM No.	DESCRIPTION
16.	111-1172	Cold stem assembly (quarter-turn)
17.	111-1171	Hot stem assembly (quarter-turn)



SPRAY VALVE PARTS

REF No.	ITEM No.	DESCRIPTION
18.	111-1066	Push-button
19.	111-1064	Bonnet spring
20.	111-1059	Bonnet washers
21.	111-1140	Bonnet body
22.	111-1054	Binding washer
23.	111-1144	Seat washer
24.	111-1057	Stem with packing
25.	111-1138	Squeeze valve body
26.	111-1082	Hold-down ring
27.	111-1068	Squeeze valve handle
28.	111-1070	Handle screw
29.	111-1076	Handle nut
30.	111-1097	Hose washer
31.	111-1131	Short pipe
32.	111-1120	Spray cup
33.	111-1112	Thin rubber ring
33.	111-1161	Thick rubber ring (new style)
34.	111-1053*	Spray face
35.	111-1089	Spray face screw
36.	111-1086	Spray face assembly
37.	111-1141	Complete bonnet assembly - includes 18 through 24
38.	111-1095	Shield for water-saving spray valves

*Conforms to the Energy Policy Act of 2005

PARTS & ACCESSORIES FOR T&S BRASS PRE-RINSES

T-40 UPGRADE KIT

No. 111-1009

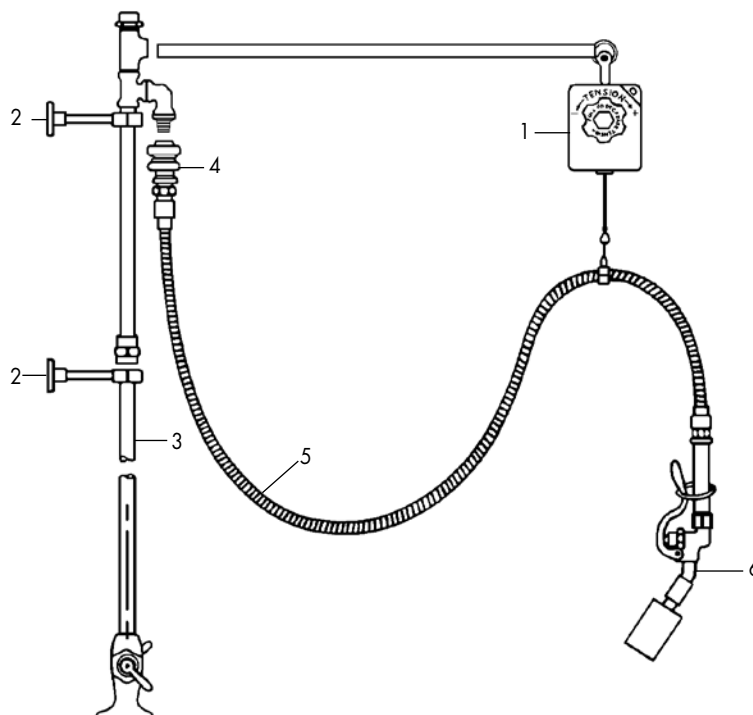
- Can be added to most pre-rinses, including competitive models with a $\frac{3}{8}$ " NPT riser
- 21" overhang
- Does not include mixing valve or hose

PARTS

REF

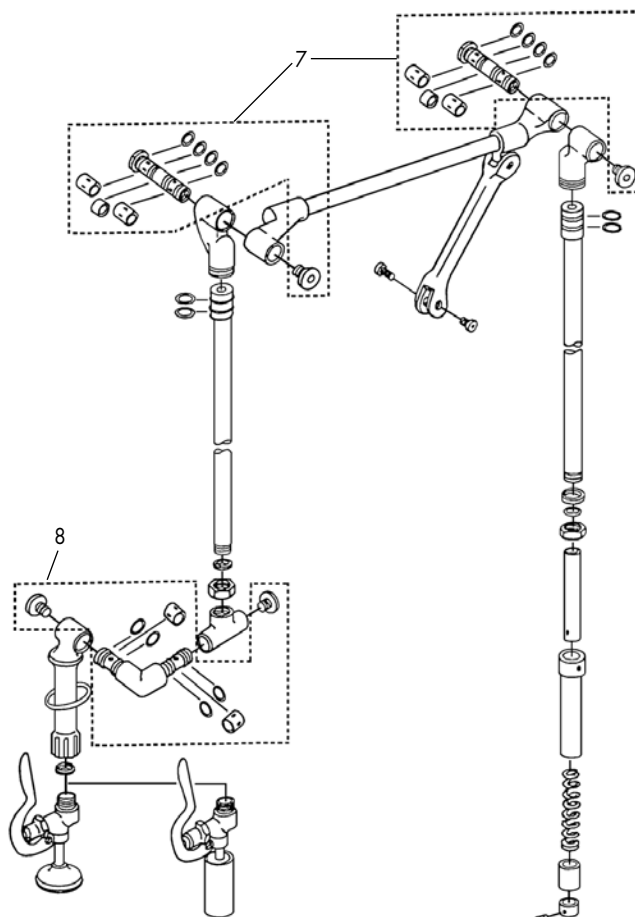
REF	ITEM No.	DESCRIPTION
1.	111-1005	Hose balance—with hose clamps
2.	111-1017	Wall bracket
3.	106-1100	24" lower riser tube
4.	111-1002	$\frac{3}{8}$ " NPT vacuum breaker
5.	111-1048	68" hose with handle
6.	111-1008*	Angled water-saving spray valve

* Conforms to the Energy Policy Act of 2005 and the ASTM F-2324 standard for water conservation.



REPAIR KITS

7. **No. 111-1152** Knuckle joint assembly
 - T&S Brass no. 9228-40
 - Kit includes: 1 shaft, 1 end cap, 1 sleeve, 1 loctite pack and lubricant; 2 bearings; 4 O-rings
8. **No. 111-1153** Elbow joint assembly
 - T&S Brass no. 9227-40
 - Kit includes: 1 swivel elbow assembly, 1 loctite pack and lubricant; 2 end caps, 2 bearings; 4 O-rings



PARTS & ACCESSORIES FOR T&S BRASS PRE-RINSES

BACKFLOW PREVENTER

No. 111-1013

- 3/4" garden hose female inlet
- 3/4" garden hose female outlet
- Rated 125 PSI for water
- Chrome-plated brass



WATTS BACKFLOW PREVENTER

No. 111-1012

- For use with T&S Brass
- For use on either side of pre-rinse hose
- 3/4-14 thread female inlet
- 3/4-14 thread male outlet
- Chrome-plated brass
- T&S no. B971



WATTS BACKFLOW PREVENTER

No. 117-1052

- For use on bottom of pre-rinse riser tubes
- 3/8" NPT male inlet
- 3/8" NPT female outlet
- Rated 125 PSI for water
- Chrome-plated brass



DOUBLE BACKFLOW PREVENTER

No. 113-1081

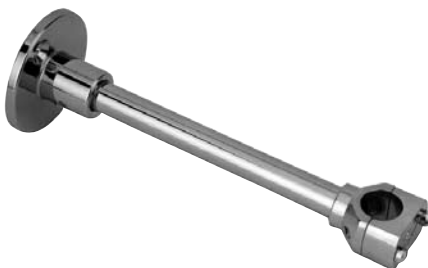
- For use between the pre-rinse hose and spray valve
- 2 check valves ensure safety in case one fails
- 3/4-14 thread female inlet
- 3/4-14 thread male outlet
- Chrome-plated brass



WALL HOOK

No. 113-1014

- For pre-rinse and pot hooks
- Chrome-plated brass with vinyl-coated hook



PRE-RINSE WALL BRACKETS

- Length shown above is the distance from the wall to the center line of the riser tube
- Can be cut in the field
- For 3/8" NPT riser pipe
- T&S no. B109 series

No. 111-1017 Adjusts from 2" to 6 3/4" long

No. 111-1018 Adjusts from 2" to 12 3/4" long

No. 111-1019 Adjusts from 2" to 18 3/4" long



ELBOW

No. 111-1166

- Used to connect wall mount faucet or pre-rinse to supply line
- Will fit within a standard 2" backsplash
- 1/2" NPT female inlet and outlet
- Brass

SPOUT ADAPTORS

1. No. 111-1042 Spout adaptor
 - Converts pre-rinse base to faucet base
2. No. 111-1043 Spout adaptor
 - Converts faucet base to pre-rinse base



HOSE ADAPTORS

- Fits T&S 3/4-14 pre-rinse hose thread

No. 111-1122 3/8" NPT male

No. 111-1123 3/8" NPT female

No. 111-1124 1/2" NPT male

No. 111-1125 1/2" NPT female

No. 111-1126 3/4" NPT male

No. 111-1129 Garden hose female



EASYINSTALL® ADAPTOR KIT FOR PRE-RINSE BASES

No. 111-1175

- Used to retrofit 3/8" NPT riser tube into existing EasyInstall pop and lock pre-rinse base faucet
- T&S no. EZ-K



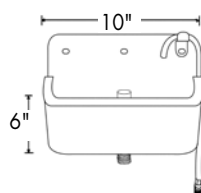
DIPPERWELLS & ACCESSORIES



SIDE MOUNTED DIPPERWELL

No. 117-1151

- Can be attached to the side of an ice cream cabinet or soda fountain
- 10" W x 6" H x 3" D
- $\frac{5}{8}$ " OD rubber bumper allows excess water to be tapped off
- $\frac{1}{4}$ " inlet tube with adaptor
- Includes 1" NPS drain, overflow tube, and mounting screws
- Stainless steel



DIPPERWELL INSTALLATION KIT

No. 117-1152

- For use with side mounted dipperwell (No. 117-1151)
- Kit includes all the components for water line and drain connections

REPLACEMENT OVERFLOW TUBE

No. 117-1153

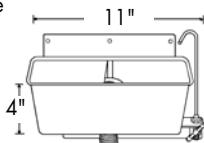
- For use with side mounted dipperwell (No. 117-1151)
- Brass



SIDE MOUNTED DIPPERWELL

No. 117-1060

- Can be attached to the side of an ice cream cabinet or soda fountain
- Includes stainless steel shut-off valve at the base of inlet tube
- Includes overflow tube
- $\frac{1}{4}$ " flare male inlet
- 1" NPS drain
- 2 GPM maximum output
- Stainless steel



REPLACEMENT OVERFLOW TUBE

No. 117-1135

- For use with dipperwell (No. 117-1060)
- 1" OD x $2\frac{1}{4}$ " H
- White PVC



REPLACEMENT FAUCET

No. 117-1136

- For use with dipperwell (No. 117-1060)
- $\frac{1}{4}$ " flare male inlet
- Stainless steel



Many items on this page are available
Lead-free Compliant.

Ask us about the item you need.

DIPPERWELLS & ACCESSORIES



DIPPERWELL FAUCET WITH LONG SHANK

No. 107-1034

- 1/2" NPS x 2 1/2" shank
- 5/16" ID sweat inlet connection
- Chrome-plated brass

No. 106-1172 Replacement stem assembly with handle



DIPPERWELL STANDARD FAUCET

No. 107-1033

- 1/2" NPS x 1 3/8" shank
- 1/4" NPT male inlet
- Chrome-plated brass

No. 106-1166 Replacement stem assembly with handle



DIPPERWELL ASSEMBLIES

- Will fit a 5 1/2" or 6" hole
- 7" outside diameter of finished edge
- 5 3/4" overall height
- 1 1/2" NPS stainless steel drain
- Stainless steel inner and outer can

No. 117-1129

- Dipperwell with faucet (No. 107-1033)

No. 117-1130

- Dipperwell with faucet (No. 107-1034)

No. 117-1127

- Dipperwell only

No. 117-1126 Replacement inner can

**See why the
Accusharp®
Knife Sharpener**



**is one of our
top selling
items!**

**See page 465 for
more information.**



DIPPERWELL FAUCET by FISHER

No. 112-1041

- For Fisher dipperwell model 3041
- 3/8" NPS x 1 1/4" shank
- Chrome-plated brass



DIPPERWELL ASSEMBLY

No. 117-1242

- Fits a 6" hole
- 7" outside diameter of finished edge
- 1 1/2" NPS drain
- 1/8" NPT inlet tube with adaptor
- Includes 1 1/2" x 4" plastic tailpipe
- Stainless steel

No. 117-1243 Replacement needle valve (not shown)

- 1/8" NPT inlet and outlet



Many items on this page are available
Lead-free Compliant.

Ask us about the item you need.

DIPPERWELL



SPADEWELL ICE CREAM SPADE CLEANING WELL by NEMCO®



Larger size to more easily accommodate ice cream spades. Features user-friendly rounded corners and a rubber bumper that provides protection and sound deadening when removing water from spades.

No. 400-1024

- Models 77316-19, 77316-19-2
- 7 $\frac{3}{4}$ " H x 19 $\frac{1}{4}$ " W x 5 $\frac{5}{8}$ " D
- $\frac{1}{4}$ " NPT inlet tube
- 1 $\frac{1}{2}$ " NPS drain
- Includes drain tube, ball valve, compression fitting, and mounting hardware
- Stainless steel

**Divider sold separately.
Do not install well into food
zone or sink compartment.**

FOUNTAIN & BEER FAUCET ACCESSORIES



SANI-TAP GERMICIDAL DRIP PAN STRIPS

Say good-bye to foul odors with these deodorizing and disinfecting strips. They control odors from mildew, fungi, algae, and slime. They even reduce the presence of fruit flies. Last up to 3 weeks!

No. 102-1158

- Used in beer tap and soda dispenser drip pans, and floor drains
- Can also be used in other areas, such as refrigerator drain pans and urinals
- Helps prevent drain overflows
- 5" x 1 $\frac{1}{2}$ " x $\frac{1}{2}$ " (127mm x 38mm x 13mm)
- Controlled release
- Pack of 10



SWIRL HOSES™



WITH STREET ELBOWS by DORMONT®

- For connecting foodservice equipment to a water supply such as ice machines, coffee makers, etc.
- 48" long (extended)
- 160° maximum working temperature
- 100 PSI
- Includes street elbow
- Spiral polyurethane tubing with brass fittings

No. 117-1139 $\frac{1}{4}$ " ID hose

- $\frac{1}{4}$ " NPT male x $\frac{1}{4}$ " NPT female fittings

No. 117-1140 $\frac{3}{8}$ " ID hose

- $\frac{3}{8}$ " NPT male x $\frac{3}{8}$ " NPT female fittings

No. 157-1116 $\frac{1}{2}$ " ID hose

- $\frac{1}{2}$ " NPT male x $\frac{1}{2}$ " NPT female fittings



SLOTTED TYPE DISCONNECT

No. 104-1068

- For gas – 2 slots
- $\frac{1}{4}$ " male flare
- Plastic



FLARE FITTING FOR $\frac{1}{4}$ " ID HOSE

No. 117-1141

- $\frac{1}{4}$ " NPT male x $\frac{1}{4}$ " female flare fitting

FOUNTAIN & BEER FAUCETS

BEER TOWER

No. 104-1073

- 2½" diameter
- 14½" high
- 9" deck to spout tip
- 48" tubing with 29/32-14 standard beer thread female inlet
- Handle not included
- Chrome-plated brass

No. 130-1000 Handle only

- 2¾" long



BEER FAUCETS

- Fits standard beer shank

No. 104-1006 Chrome-plated faucet only

No. 104-1007 Brass faucet only

No. 130-1000 Handle only

- Fits above faucets
- 2¾" long

FOUNTAIN DRAFT ARMS

- Handle positions for both coarse and fine streams
- ½" NPS x 3" shank
- ¼" ID hose barb inlet
- 15¼" high
- 5/16-18 handle stud
- Chrome-plated brass

No. 104-1070 Soda

No. 104-1071 Water

Note: Soda arm (No. 104-1070) is for carbonated water only, not syrup mixed sodas.

PARTS

No. 142-1127 Faucet wrench

No. 104-1079 Repair kit

- Contains 1 of each: adjusting screw, tumbler backing, soda and water tumbler, soda and water washer, soda spray washer



TAP LOCK

No. 104-1072

- Special lock for beer faucets
- Includes 1 key

TOMLINSON S SERIES FAUCETS



FAUCET

No. 286-1007

- 3/8" NPS x 1/2" shank
- Plastic
- Tomlinson nos. 1000669, SPBH

FAUCET

No. 286-1008

- 1 1/32-14 male thread
- Plastic
- Tomlinson nos. 1018305, SPB

No. 178-1001

- Wing nut only



FAUCETS

- 1 1/32-14 male thread

No. 286-1005 Chrome-plated brass

- Tomlinson nos. 1018647, SC

No. 286-1018 Chrome-plated brass with plastic bonnet (not shown)

- Tomlinson nos. 1000437, S

No. 190-1184 Chrome-plated brass with red plastic handle marked "water"

- Tomlinson no. 1000528



CARRIER FAUCETS

- 7/8-14 wing nut mounting

No. 286-1009 Chrome-plated brass

- Tomlinson nos. 1000600, SCM

No. 286-1010 Plastic

- Tomlinson nos. 1000690, SPBM

No. 242-1005 Wing nut washer only



FAUCET

No. 286-1015

- Commonly used on Colony, Enterprise, Westbend, and others
- 1/2" NPS male inlet
- Fits all 3/8" NPS union nut shanks
- Plastic
- Tomlinson nos. 1000650, SPB-3/8"



TRIP CUP DISPENSING FAUCET

No. 286-1011

- 1 1/32-14 male thread
- Chrome-plated brass
- Tomlinson nos. 1000725, TSC



FAUCETS WITH CLEAN-OUT CAP

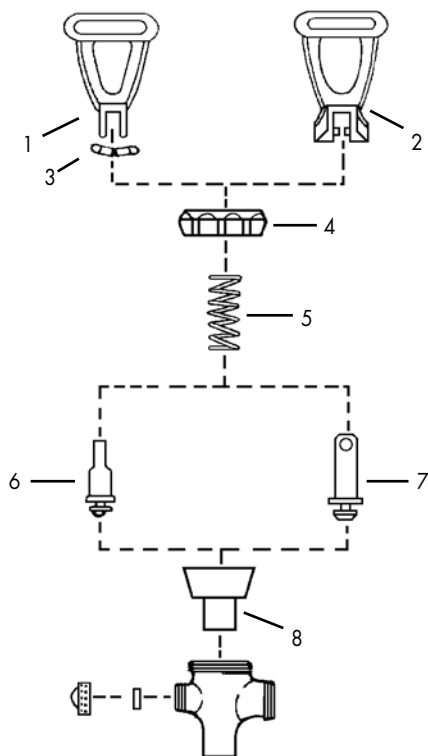
No. 286-1017 Chrome-plated brass

- 1 1/32-14 male thread
- Tomlinson nos. 1000583, SC1

No. 286-1019 Chrome-plated brass with plastic bonnet (not shown)

- 1 1/32-14 male thread
- Tomlinson nos. 1000476, S1

PARTS FOR S SERIES TOMLINSON FAUCETS & OTHERS



FAUCET PARTS

REF
No. ITEM No. DESCRIPTION

OLD STYLE PINNED HANDLES

- | | | |
|----|-----------------|----------------|
| 1. | 287-1009 | Black handle |
| 3. | 287-1017 | Pin |
| 4. | 287-1019 | Plastic bonnet |
| 5. | 287-1020 | Spring |
| 6. | 287-1021 | Stem |
| 8. | 287-1022 | Seat cup |

NEW STYLE PINLESS HANDLES

- | | | |
|----|-----------------|----------------|
| 2. | 287-1011 | Black handle |
| 4. | 287-1019 | Plastic bonnet |
| 5. | 287-1020 | Spring |
| 7. | 287-1013 | Stem |
| 8. | 287-1022 | Seat cup |



REPAIR KIT FOR PINLESS FAUCET

No. 287-1016

- Kit includes: 1 of each: spring, stem, and seat cup



REPAIR KIT FOR PINNED FAUCET

No. 287-1015

- Kit includes: 1 of each: pin, spring, stem, and seat cup



SEAT CUPS

No. 287-1026 Small size

- $\frac{13}{16}$ " top diameter

No. 287-1027 Medium size

- $\frac{15}{16}$ " top diameter

No. 287-1022 Large size

- $1\frac{1}{4}$ " top diameter for S and SP series faucets



PINLESS UPPER ASSEMBLY

No. 287-1014

- Includes 1 of each: black handle, plastic bonnet, spring, stem, and seat cup



PINNED UPPER ASSEMBLY

No. 287-1025

- Includes: 1 of each: black handle, pin, chrome bonnet, spring, stem, and seat cup



PLAIN SHANK

No. 287-1007

- Fits standard union nut faucets
- $\frac{1}{2}$ " NPS male inlet
- $1\frac{1}{32}$ -14 female thread outlet
- Chrome-plated brass
- Tomlinson no. A16C

SPECIALTY FAUCETS & ASSEMBLIES



1



2

FAUCETS

1. **No. 262-1096**

- For Rubbermaid® Brute Greenskeeper
- Rubbermaid no. 2624L3

2. **No. 262-1020**

- For Rubbermaid® models 3358, 3359, 3 gal and 5 gal beverage dispensers
- Rubbermaid no. 3358L6



CROCK FAUCET

No. 286-1000

- For earthenware crocks and thick walled containers
- $\frac{3}{4}$ -16 x $1\frac{1}{4}$ " threaded shank
- Plastic
- Tomlinson nos. 1000134, 1000145, 1000160, HFSG

No. 287-1041 Nut

- $\frac{3}{4}$ -16 thread
- Tomlinson part no. 1902524, 1917443

No. 287-1042 Washer

- Tomlinson part no. 1903259



SMALL SIZE PERCOLATOR FAUCET

No. 286-1013

- Commonly used on Westbend
- $\frac{1}{2}$ -20 x $\frac{5}{16}$ " shank
- $2\frac{3}{4}$ " overall length
- Plastic
- Tomlinson no. HPSBCI



WINE FAUCET

No. 286-1001

- Hose barb for $\frac{1}{2}$ " ID tubing and $\frac{3}{8}$ " NPS x $\frac{1}{2}$ " thread inlets
- Plastic
- Tomlinson nos. 1021127, HF5H



DRINKING FOUNTAIN FAUCET

No. 108-1001

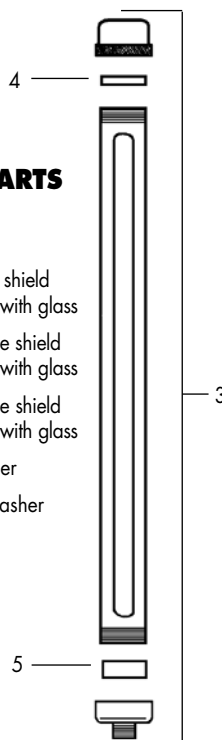
- $\frac{3}{8}$ " NPT female inlet
- Chrome-plated brass



GAUGE GLASS CUTTER

No. 142-1228

- Scores and cuts gauge glass and glass tubing quickly and easily



GAUGE SHIELD ASSEMBLIES AND PARTS

- With $\frac{5}{8}$ " OD gauge glass
- $\frac{1}{8}$ " NPT male inlet on base
- 3. **No. 287-1037** 9" gauge shield assembly with glass
- 3. **No. 287-1033** 10" gauge shield assembly with glass
- 3. **No. 287-1035** 15" gauge shield assembly with glass
- 4. **No. 287-1030** Top washer
- 5. **No. 287-1031** Bottom washer



GAUGE GLASS NUT AND WASHER

- Stainless steel hose fittings
- For $\frac{5}{8}$ " gauge glass
- 6. **No. 287-1029** Gauge glass nut
 - $\frac{1}{16}$ " ID
- 7. **No. 104-1077** Gauge glass washer
 - $\frac{13}{16}$ " OD x $\frac{9}{16}$ " ID x $\frac{1}{4}$ " thick



GAUGE GLASS

- No. 274-1084** $\frac{5}{8}$ " OD x 6" L
- No. 104-1076** $\frac{5}{8}$ " OD x 8" L
- No. 274-1085** $\frac{5}{8}$ " OD x 10" L
- No. 104-1074** $\frac{5}{8}$ " OD x 12" L
- No. 104-1075** $\frac{5}{8}$ " OD x 18" L

WATER STATION ACCESSORIES



WATER STATION

No. 117-1138

- 12" wide x 14" deep overall size
- 8 $\frac{3}{4}$ " x 8 $\frac{3}{4}$ " x 3" deep drainage area with grid
- Drainage area is 2" from riser hole
- $\frac{7}{8}$ " diameter hole for glass filler shank
- Includes $\frac{1}{2}$ " NPS drain
- Stainless steel



WATER STATION by FISHER

No. 113-1012

- 10 $\frac{1}{8}$ " x 8 $\frac{1}{2}$ " overall size
- 3 $\frac{1}{4}$ " deep
- $\frac{1}{16}$ " diameter hole for glass filler shank
- $\frac{3}{4}$ " NPS x 1 $\frac{3}{4}$ " drain
- Stainless steel
- Fisher no. 1400-0000



WATER STATION by T&S BRASS

No. 110-1090

- 10 $\frac{1}{2}$ " x 12 $\frac{1}{2}$ " overall size
- 4 $\frac{1}{2}$ " x 10" x 1 $\frac{1}{2}$ " deep drainage area
- Drainage area is 2 $\frac{3}{4}$ " from riser hole
- $\frac{7}{8}$ " diameter hole for glass filler shank
- 1 $\frac{1}{4}$ " OD x 4" long drain tailpiece
- Stainless steel
- T&S no. B1231

COUNTERTOP DRAIN TRAYS

- $\frac{1}{2}$ " x 2" NPS brass drain
- Stainless steel trough

No. 102-1088 14 $\frac{7}{8}$ " x 5 $\frac{3}{8}$ " x $\frac{3}{4}$ " D

No. 102-1090 24" x 5 $\frac{3}{8}$ " x $\frac{3}{4}$ " D

No. 102-1089 Grid only for No. 102-1088

No. 102-1117 Grid only for No. 102-1090



FLANGED DROP-IN DRAIN TRAYS

- $\frac{3}{8}$ " flange
- $\frac{3}{4}$ " deep
- $\frac{1}{2}$ " x 2" NPS brass drain
- Stainless steel trough

No. 102-1091 Fits 14 $\frac{7}{8}$ " x 5 $\frac{1}{2}$ " cut-out

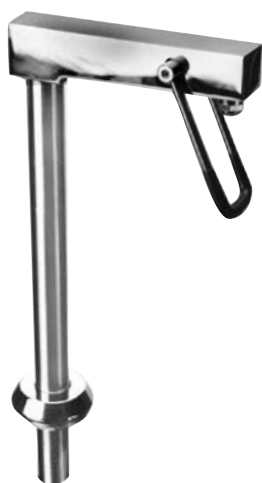
No. 102-1093 Fits 24 $\frac{1}{4}$ " x 5 $\frac{1}{2}$ " cut-out

No. 102-1089 Grid only for No. 102-1091

No. 102-1117 Grid only for No. 102-1093



GLASS FILLER FAUCETS



COMMERCIAL-DUTY GLASS FILLER

No. 106-1174

- Continuous flow position and manual water volume control adjustment
- 1/2" NPS x 2 3/4" shank with mounting hardware
- 8" height from deck to spout tip
- 4 1/4" projection
- Chrome-plated brass head
- Stainless steel riser



GLASS FILLER by FISHER

No. 112-1005

- Manual water volume control adjustment
- 3/8" NPS x 1 3/4" shank
- 8 1/2" height from deck to spout tip
- 4 3/4" projection
- Chrome-plated brass
- Fisher no. 1007



COMMERCIAL-DUTY WALL MOUNT GLASS FILLER

No. 106-1175

- Manual water volume control adjustment
- 1/2" NPS x 3" shank
- 3/8" ID
- 5 1/4" projection
- Chrome-plated brass



HOSE-TYPE GLASS FILLERS by T&S BRASS

- 1/2" NPT male hose inlet
- 36" stainless steel flexible hose

1. **No. 110-1089** Spray valve hose with aerator tip
 - T&S no. B101A

2. **No. 111-1102** Replacement spray valve with aerator tip

2. **No. 110-1079** Spray valve hose with spray head
 - T&S no. B101

- No. 111-1038** Valve repair kit (not shown)

- T&S no. B16K
- Kit includes: 1 spring, 2 brass washers, 2 packings, 2 seat washers, 2 binding washers, 2 fiber washers



Many items on this page are available
Lead-free Compliant.

Ask us about the item you need.

GLASS FILLER FAUCETS & ACCESSORIES



GLASS FILLER by T&S BRASS

No. 110-1086

- Manual water volume control adjustment
- 1/2" NPS x 2" shank
- 8" height from deck to spout tip
- 4 1/8" projection
- Chrome-plated brass
- T&S no. B1210

- **No. 110-1084** Replacement head only
- T&S no. B1205



WALL MOUNT GLASS FILLER by T&S BRASS

No. 110-1085

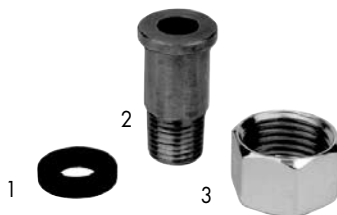
- Manual water volume control adjustment
- Fits up to a 7/8" hole
- Lock nut and adjustable flange included
- 3/8" NPT female inlet
- 4" projection
- Chrome-plated brass
- T&S no. B1200



GLASS AND PITCHER FILLER by T&S BRASS

No. 110-1088

- Manual water volume control adjustment on glass filler
- 1/2" NPS x 2" shank
- 8" height from deck to glass filler spout tip
- 14" height from deck to pitcher filler spout tip
- 4 1/8" glass filler projection
- 6" spout on pitcher filler
- Chrome-plated brass
- T&S no. B1225



PARTS FOR T&S BRASS GLASS FILLERS

- Connect water supply to glass filler
- 1. **No. 111-1157** Tailpiece washer
- 2. **No. 111-1155** Tailpiece
 - 1/4" NPT male
- 3. **No. 111-1156** Tailpiece nut
 - 1/2" NPT female



GLASS FILLER REPAIR KITS COMMERCIAL-DUTY

No. 106-1161 Repair kit

- Contains O-rings, cam, plunger, nozzle, spring, cap, activation lever and set screws

FISHER

No. 113-1020 Repair kit (not shown)

- Contains bonnet washer, bonnet nut, volume cock assembly, spring, retainer assembly, lift pin assembly, flow control axle screw and arm
- Fisher no. 1134

T&S BRASS

No. 111-1036 Repair kit (not shown)

- Contains handle screw and nut, lever arm, 2 bonnet washers, 2 hex cap washers, 2 springs, 2 seat washers, and 2 packings
- T&S no. B1255

REPLACEMENT GLASS FILLER ARMS

- **No. 111-1115** T&S arm
- Blue Lexan®

PARTS

- **No. 111-1070** Screw
- **No. 111-1076** Nut

- **No. 113-1019** Fisher arm
- White plastic



Many items on this page are available
Lead-free Compliant.

Ask us about the item you need.

VALVES



THERMOSTATIC MIXING VALVE by ZURN®

Prevents scalding water-related injuries.

No. 117-1287

- 3/4" compression inlet and outlet
- 95° to 115°F outlet temperature range
- 145 PSI maximum inlet pressure
- Includes two 3/8" compression fittings and mounting bracket
- Bronze body
- Zurn no. ZW3870-4P

BACKFLOW PREVENTER

No. 111-1013

- 3/4" garden hose female inlet
- 3/4" garden hose female outlet
- Rated 125 PSI for water
- Chrome-plated brass



ANGLE VALVE

No. 117-1018

- 3/4" NPT
- Rated 125 PSI for steam, 200 PSI for water
- Heat resistant handle
- Brass



LONG HANDLE ANGLE STEAM VALVE

No. 117-1064

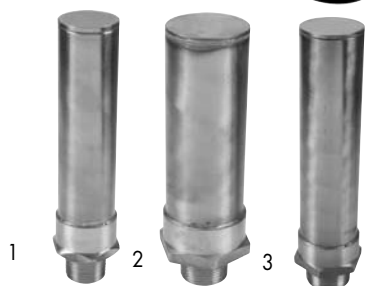
- 1/2" NPT
- Rated 125 PSI for steam, 200 PSI for water
- Brass



TRAP PRIMER by ZURN®

No. 117-1288

- 1/2" solder x 1/2" NPT
- Brass
- Zurn no. TP2920BR1



WATER ARRESTORS by ZURN®

- 150 PSI, 180°F maximum water rating
- ANSI-compliant
- Brass/copper

1. **No. 117-1284** 1/2" NPT
• Zurn no. 1250A
2. **No. 117-1285** 3/4" NPT
• Zurn no. 1250B
3. **No. 117-1286** 1" NPT
• Zurn no. 1250C

GLOBE VALVES

- Rated 150 PSI for steam, 300 PSI for water
- Heat resistant handle
- Brass

No. 117-1014 1/2" NPT
No. 117-1015 3/4" NPT



LONG HANDLE GLOBE STEAM VALVE

No. 117-1066

- 3/8" NPT
- Rated 125 PSI for steam, 200 PSI for water
- Brass



VACUUM BREAKERS

4. **No. 111-1014** 3/8" NPT
4. **No. 111-1015** 1/2" NPT
• Unfinished brass
5. **No. 117-1055** 3/4" NPT
• Chrome-plated brass



REPAIR KITS FOR VACUUM BREAKERS

- Each kit contains disk float, and O-ring

No. 117-1053 For 3/8" NPT

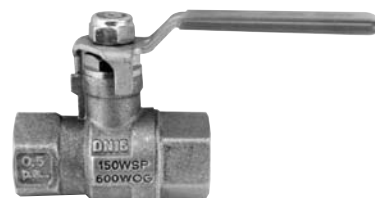
No. 117-1057 For 1/2" NPT

No. 117-1056 For 3/4" NPT

VERTICAL MOUNTING CHECK VALVE

No. 111-1022

- 1/2" NPT
- Rated 125 PSI for steam, 400 PSI for water
- Brass



HEAVY-DUTY BALL VALVES

- Rated 600 PSI for water, oil, and gas
- Brass

No. 117-1084 1/2" NPT

No. 117-1085 3/4" NPT

No. 117-1081 1" NPT

No. 117-1083 1 1/4" NPT

VALVES

CONBRACO PRESSURE RELIEF VALVES

- Commonly used on steam cooking equipment
- 3/4" NPT
- Chrome-plated brass

No. 117-1121 8 PSI
No. 117-1122* 8 PSI
No. 117-1116* 15 PSI
No. 117-1117 25 PSI
No. 117-1118 30 PSI
No. 117-1119 45 PSI
No. 117-1120 50 PSI

*Unplated brass



WATTS TEMPERATURE AND PRESSURE RELIEF VALVES

- 3/4" NPT
- 210°F temperature relief
- Bronze body

No. 117-1113
 • 125 PSI
No. 117-1114
 • 150 PSI



WATTS PRESSURE REDUCING VALVE

No. 117-1110

- 1/2" NPT
- Rated 25-75 PSI
- Bronze body



WATTS PRESSURE REDUCING VALVE

No. 117-1112

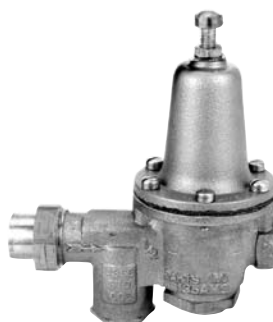
- 3/8" NPT
- Rated 10-100 PSI
- Bronze body



WATTS PRESSURE REDUCING VALVE

No. 117-1109

- 3/4" NPT
- With integral strainer and union inlet
- 10-35 PSI reducing range
- Bronze body



WATTS PRESSURE REDUCING VALVE

No. 117-1111

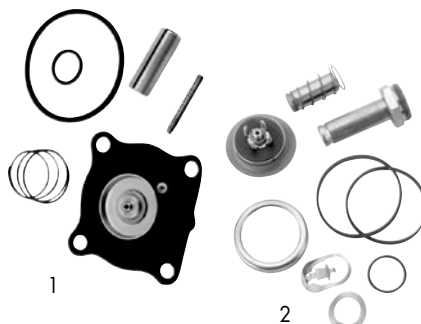
- 3/4" NPT
- Rated 25-75 PSI
- Bronze body



SOLENOID VALVE

No. 190-1015

- Commonly used on coffee equipment
- 1/8" NPT inlet and outlet
- Rated 90 PSI for water
- 120 volt



REPAIR KITS FOR ASCO VALVES

- No. 117-1088** 3/8", 1/2" NPT hot water
- No. 117-1089** 3/4" NPT hot water
- No. 117-1091** 3/8", 1/2", 3/4" NPT steam (old style)
- No. 117-1154** 3/8", 1/2" NPT steam (new style)
- No. 117-1155** 3/4" NPT steam (new style)

DIAPHRAGMS ONLY

- No. 117-1086** 3/8", 1/2" NPT hot water
No. 117-1087 3/4" NPT hot water
No. 117-1090 3/8", 1/2", 3/4" NPT steam (old style)

ASCO STEAM-RATED SOLENOID VALVES

- 300°F maximum temperature rating
- 50 PSI safe working pressure
- Normally closed

No. 117-1094 120 volt 3/8" NPT
No. 117-1092 120 volt 1/2" NPT
No. 117-1093 120 volt 3/4" NPT
No. 117-1096 240 volt 3/4" NPT

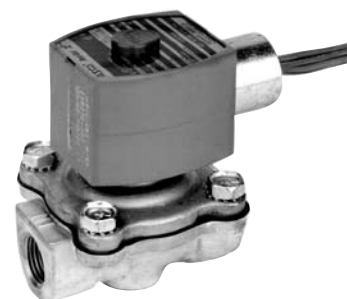


ASCO HOT WATER-RATED SOLENOID VALVES

- 210°F maximum temperature rating
- 125 PSI safe working pressure
- Normally closed

No. 117-1104 120 volt 3/8" NPT
No. 117-1102 120 volt 1/2" NPT
No. 117-1103 120 volt 3/4" NPT
No. 117-1107 240 volt 3/8" NPT
No. 117-1105 240 volt 1/2" NPT
No. 117-1106 240 volt 3/4" NPT

No. 117-1099 240 volt coil only



FLUSH VALVES

ROYAL® FLUSHOMETER VALVES by SLOAN®

- Chrome-plated brass
1. **No. 141-1044** Toilet valve, 3.5 GPF
 - Model 110
 - 1" NPS inlet x 1½" OD outlet tube
 1. **No. 141-1171** Toilet valve, 1.6 GPF
 - Model 111
 - For use on low water consumption toilets only
 - 1" NPS inlet x 1½" OD outlet tube
 2. **No. 141-1049** Urinal valve, 1.5 GPF
 - Model 186
 - ¾" NPS inlet x ¾" OD outlet tube



NEW



TOILET FLUSH HANDLES

- Includes threaded plastic nut and brass lever
- Chrome-plated brass

No. 106-1178 Left-hand
No. 106-1179 Right-hand



TOILET FLAPPER

No. 280-1247

- Adjustable to control amount of water per flush

REPLACEMENT PARTS FOR ROYAL® FLUSHOMETER VALVES by SLOAN®



DIAPHRAGM REPAIR KITS FOR FLUSH VALVES

- Contain all necessary internal parts

STANDARD CONSUMPTION

No. 141-1029 Urinal (1.5 GPF)
No. 141-1030 Toilet (4.5 GPF)

LOW CONSUMPTION

No. 141-1160 Urinal (1 GPF)
No. 141-1159 Toilet (1.6 GPF)



REPLACEMENT CAPS FOR FLUSH VALVES

- Chrome-plated brass

No. 141-1013 1⅞" OD
No. 141-1012 1½" OD



VACUUM BREAKER REPAIR KIT FOR FLUSH VALVES

No. 141-1031

- Contains all necessary internal parts



HANDLE REPAIR KIT FOR FLUSH VALVES

No. 141-1028

- Contains all necessary internal parts

FLUSH VALVES



INFRARED FLUSH KIT by SLOAN®

No. 141-2031

- Used to retrofit toilets and urinals with side mount infrared units
- "No Hands" operation
- Kit includes: Manual override,
Low battery warning light,
Infrared sensor range adjustment screw,
Reset button,
4 C batteries,
Installation tools

No. 253-1240 Replacement C battery



G2 OPTIMA PLUS® INFRARED FLUSH VALVE KITS



by SLOAN®

Automatic flush valves save water, are sanitary, and meet ADA requirements. Kits easily convert manual Sloan Flushometers to hands-free automatic operation that require no AC electric hook-up. Efficient 3 year battery life.

- Includes manual override
- 4 AA batteries included
- Low battery warning light

No. 141-1139 Urinal

- Model G2-RESS-U
- Fits urinal flush valve (No. 141-1049)
- Includes 2 flush regulators, 1.0 GPF and 1.5 GPF

No. 141-2026 Toilet

- Model G2-RESS-C
- Fits toilet flush valves (No. 141-1044 and 141-1171)
- Includes 2 flush regulators, 1.6 GPF and 3.5 GPF

No. 253-1241 Replacement AA battery

REPLACEMENT PARTS FOR OPTIMA PLUS® TOILET FLUSH VALVE CONVERSION KITS, RESS SERIES



ELECTRONIC MODULE

No. 141-2029

- For model RESS-C-1.6
- Includes 4 AA batteries

No. 253-1241 Replacement AA battery

STOP CAP

No. 141-2027

- For models RESS-C-1.6, RESS-C-3.5, RESS-C-4.5
- Used in 1" H600A/H700A Bak-Chek® Control Stop
- 1 1/8" OD
- Includes sleeve
- Chrome-plated brass



HANDLE CAP

No. 141-2030

- For models RESS-C-1.6, RESS-C-3.5, RESS-C-4.5
- 1 3/4" OD
- Includes gasket
- Chrome-plated brass



DIAPHRAGM KIT

No. 141-2028

- For models RESS-C-1.6, RESS-C-3.5, RESS-C-4.5
- Includes white regulator for 3.5/4.5 GPF

PEDAL & FOOT VALVES

FOOT VALVE by T&S BRASS

No. 110-1106

- Elevated mounting
- Self-closing valve with twin pedals
- 1/2" NPT female inlets on 2 1/2" centers on top
- 1/2" NPT female outlet on top
- 13 3/4" from wall to pedal tip
- Chrome-plated brass
- T&S no. B504

No. 111-1141 Replacement bonnet assembly

FLOOR MOUNTED DOUBLE PEDAL VALVE by T&S BRASS

No. 110-1067

- Self-closing valve with twin pedals
- 1/2" NPT female inlets on 2 1/2" centers on back
- 1/2" NPT female outlet on back
- 1" from floor to center of inlets
- Chrome-plated brass
- T&S no. B502

No. 111-1141 Replacement bonnet assembly

DOUBLE PEDAL VALVE by T&S BRASS

No. 110-1069

- Elevated mounting
- Self-closing valve with twin pedals
- 1/2" NPT female inlets on 2 1/2" centers on back
- 1/2" NPT female outlet on top
- Chrome-plated brass
- T&S no. B505

No. 111-1141 Replacement bonnet assembly



ENCORE® FLOOR MOUNTED DOUBLE PEDAL VALVE by CHG

No. 106-1144

- Self-closing valve with twin pedals
- 1/2" NPT female inlets on 2 1/2" centers on back
- 1/2" NPT outlet on back
- Color-indexed pedals
- Rough chrome body with polished chrome foot pedals

No. 106-1155 Replacement bonnet assembly



FLOOR MOUNTED SINGLE PEDAL VALVE by T&S BRASS

No. 110-1068

- For use with mixing valve (No. 111-1023)
- Self-closing valve with pedal
- 1/2" NPT female inlet and outlet on back
- 1" from floor to center of inlet
- Chrome-plated brass
- T&S no. B507



MIXING VALVE by T&S BRASS

No. 111-1023

- For use with single pedal valve (No. 110-1068)
- 3" centers
- 3/8" NPT female inlets and outlet on back
- Chrome-plated brass
- T&S no. B513



FOOT VALVE CYLINDER by FISHER

No. 113-1111

- For Fisher foot and knee valves
- Fisher no. 3070-0000

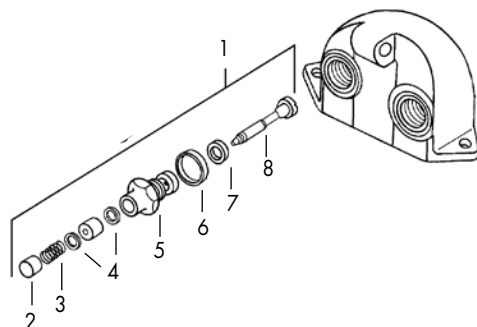
PEDAL AND FOOT VALVE PARTS by T&S BRASS

REF No.	ITEM No.	DESCRIPTION
1.	111-1141	Bonnet assembly
2.	111-1066	Push button
3.	111-1064	Spring
4.	111-1059	Bonnet washer
5.	111-1140	Bonnet body
6.	111-1054	Binding washer
7.	111-1144*	Seat washer
8.	111-1057	Stem with packing

*Includes 1 gray washer and 1 white hard rubber washer

No. 111-1011 Valve repair kit

- Kit includes:
 - 4 stems with packings (No. 111-1057)
 - 4 springs (No. 111-1064)
 - 4 binding washers (No. 111-1054)
 - 4 bonnet washers (No. 111-1059)
 - 4 gray seat washers (No. 111-1144)
 - 4 white seat washers, hard rubber (No. 111-1144)
- T&S Brass no. B50P



Are You Missing the FAX?



**Take advantage
of this
FREE SERVICE...
Get new product
updates &
exclusive savings
opportunities!
Call Sales to
register for
this service.**



PLUMBER'S PUTTY

No. 117-1156

- ½ pt, 14 oz (397g) net weight



EPOXY PUTTY

Mixes like putty, hardens like steel; it can be sawed, drilled, and tapped. Works on most metals, wood, masonry, ceramics, glass, plastic, or porcelain. Sets in 5 minutes—even under water. The one-piece formula leaves no leftovers and no mess.

- 4 oz (113g) tube

No. 142-1128 Gray/green

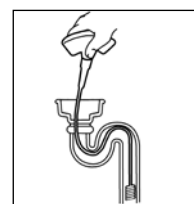
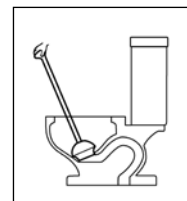
No. 142-1437 Aquamend



PIPE JOINT COMPOUND

No. 117-1036

- For use with water, steam and gas
- Non-corrosive
- 1 lb (237ml) can
- Brush is in cap



PLUNJ-N-SNAKE™ by DRAIN BLASTER®

Plunger and snake in one tool.

Handy tool can be used as a normal plunger to unclog sinks and toilets. Unscrew the T-shaped handle for a Snappy Snake™ which can be inserted into the drain or toilet to clear the clog.

No. 142-1457

- 5¾" (146mm) wide rubber base
- 24" (610mm) long snake with "corkscrew" head
- 27" (686mm) clear plastic handle



PLUNGER

No. 280-1246

- For use on toilets and sinks
- Black 6" (152mm) wide rubber base on a 21" (533mm) handle

HOSES & ACCESSORIES



HOSE CARRIER AND HOLDER

Fits easily around a 100' garden hose. The easy-to-use hook and loop closures adjust to fit most hose sizes. Can also be used for extension cords, tubing, etc.

No. 280-1177

- Tested up to 50 lb
- 3" wide
- Strong, reinforced black nylon with double stitched nylon binding and reinforced handle



INSULATED WASH-DOWN SPRAY NOZZLE

No. 159-1015

- 3/4" male thread on outlet for screwing on chemicals and other containers
- Insulated handle and grip for hot water applications (160°F maximum)
- 3/4" garden hose inlet
- Carded for point-of-purchase sale display



NEOPRENE STEAM HOSES WITH INTERNAL WIRE BRAIDS

- Maximum pressure 250 PSI
- For temperatures up to 450°F

ITEM No.	ID	LENGTH
117-1131	1/2"	10'
117-1133	3/4"	10'



HOSE RACK by STRAHMAN

No. 159-1016

- Holds up to 50' of hose
- Includes mounting hardware
- Stainless steel



STANDARD SPRAY NOZZLE

No. 159-1022

- Maximum water temperature 100°F
- Chip resistant powder coat finish
- Die-cast metal body



NOZZLE

No. 159-1147

- For use with 3/4" ID hose (No. 117-1133)
- 3/8" outlet
- 9 3/4" length
- White rubber with aluminum barb



TEFLON® TAPE

No. 117-1034

- 1/2" x 520" (13mm x 13M) roll



TEFLON® PACKING

No. 117-1011

- 3/32" round x 60" long (2mm x 1.5M)

HOSES & ACCESSORIES



CREAMERY WASH-DOWN HOSES

- For heavy-duty use
- 1/2" NPT male x 3/4" female garden hose thread
- 3/4" ID hose
- Maximum pressure 200 PSI
- Withstands hot water and saturated steam up to 298°F

No. 117-1000 25' long

No. 117-1001 50' long



INDUSTRIAL HOT WATER HOSES

- Crush-proof brass garden hose fittings
- Withstands temperatures to 180°F
- 500 lb burst strength
- Double spiral reinforcement for cut resistance
- Red, heavy-duty rubber

No. 159-1004 5/8" ID x 50' roll

No. 159-1011 3/4" ID x 50' roll



WASH-DOWN SPRAY NOZZLE by STRAHMAN

No. 159-1000

- Adjusts from a soft spray to a strong, straight spray as lever is pulled forward
- Automatically shuts off when handle is released
- Maximum water temperature 200°F
- Inlet coupling for 3/4" ID hose or 1/2" NPS female inlet
- Cast brass body with heat resistant rubber coating

No. 159-1008 Replacement cartridge

- Contains all internal moving parts

No. 159-1013 Replacement rubber cover



FITTINGS FOR SPRAY NOZZLES by STRAHMAN

- No. 159-1025** Swivel-pro adaptor
 - 1/2" NPT inlet and 3/4" garden hose thread outlet
- No. 159-1003** Swivel
 - 1/2" NPT male x 3/4" female garden hose thread swivel fitting
- No. 159-1002** Rigid
 - 1/2" NPT male x 3/4" female garden hose thread



MINI WASH-DOWN SPRAY NOZZLE by STRAHMAN

Mini version of No. 159-1000. Weighs only 1.8 lb!

No. 159-1034

- Automatically shuts off when handle is released
- Maximum water temperature 200°F
- 3/8" NPT x 3/4" female garden hose thread swivel fitting
- Brass body with black rubber coating



HYDRO-PRO150 SPRAY NOZZLE by STRAHMAN

No. 159-1024

- For use with creamery wash-down hoses (Nos. 117-1000 and 117-1001)
- Can be used with standard water hose (must use adaptor No. 159-1025)
- Ergonomic design reduces user fatigue
- Patented trigger locking mechanism
- 5 7/8" L x 7" H
- Maximum recommended operating temperature 200°F
- 1/2" NPT female inlet
- Black nylon, stay cool covering

TUBING FITTINGS



FEMALE SWIVEL FLARE HOSE NIPPLES

- Stainless steel

No. 104-1046 1/4" SAE x 1/4" ID hose

No. 104-1047 1/4" SAE x 3/8" ID hose

No. 104-1048 3/8" SAE x 1/4" ID hose

No. 104-1049 3/8" SAE x 3/8" ID hose



MALE FLARE HOSE NIPPLES

- Stainless steel

No. 104-1050 1/4" SAE x 1/4" ID hose

No. 104-1051 1/4" SAE x 3/8" ID hose

No. 104-1052 3/8" SAE x 1/4" ID hose

No. 104-1053 3/8" SAE x 3/8" ID hose



SWIVEL FLARE ELBOW HOSE NIPPLES

- Stainless steel

No. 104-1054 1/4" SAE x 1/4" ID hose

No. 104-1055 1/4" SAE x 3/8" ID hose

No. 104-1057 3/8" SAE x 3/8" ID hose



MALE PIPE HOSE NIPPLES

- Stainless steel

No. 104-1058 1/4" NPT x 1/4" ID hose

No. 104-1059 1/4" NPT x 3/8" ID hose

No. 104-1060 3/8" NPT x 1/4" ID hose

No. 104-1061 3/8" NPT x 3/8" ID hose



HOSE SPLICERS

- Stainless steel

No. 104-1043 1/4" ID hose

No. 104-1044 1/4" ID hose x 3/8" ID hose

No. 104-1045 3/8" ID hose



HOSE ELBOWS

- Stainless steel

No. 104-1042 1/4" ID hose

No. 104-1041 3/8" ID hose



HOSE TEES

- Stainless steel

No. 104-1040 1/4" ID hose

No. 104-1039 3/8" ID hose



EVA REINFORCED BEVERAGE TUBING

25' LENGTHS	100' LENGTHS	OD	ID	WALL
104-1033	104-1034	1 5/32"	1/4"	7/64"
104-1035	104-1036	5/8"	3/8"	1/8"



OETIKER CLAMP KIT

No. 142-1117

- Kit includes: 15 of each millimeter size: 8.7, 10.5, 11.3, 12.3, 13.3, 14.0, 14.5, 15.7, 17.0, 18.5; 30 of millimeter size: 19.8; and pliers

- Stainless steel stepless ear clamps

No. 142-1123 Pliers only



OETIKER CLAMPS

- Sold in quantities of 100
- Stainless steel

ITEM No.	CLAMP RANGE	FOR TUBING SIZE-OD
142-1120	.413" to .346"	3/8"
142-1122	.445" to .378"	7/16"
142-1118	.525" to .425"	1/2"
142-1443	.669" to .571"	5/8"



HOSE CLAMPS

- Standard-type with 1/2" wide band
- Sold individually
- Stainless steel clamp and screw

ITEM No.	QTY	CLAMP RANGE
142-1165*	4	1/4" to 5/8"
142-1166	6	7/16" to 25/32"
142-1116	8	1/2" to 29/32"
142-1167	10	9/16" to 1 1/16"
142-1114	12	1 1/16" to 1 1/4"

* 5/16" wide band

3M/CUNO WATER FILTERS



1



2



3



4

3M/CUNO REPLACEMENT CARTRIDGES

REF No.	FMP No.	CUNO MODEL No.	REDUCTION CLAIMS	MICRON
1	117-1264	CFS8112	Sediment, chlorine taste + odor	1
1	117-1217	CFS8112-S	Sediment, chlorine taste + odor, and scale inhibitor	1
1	117-1265	CFS8720	Sediment, chlorine taste + odor	5
1	117-1266	CFS8720-S	Sediment, chlorine taste + odor, and scale inhibitor	n/a
1	117-1267	CFS8110-S	Sediment, scale inhibitor	5
1	117-1268	CFS8000-S	Scale inhibitor	n/a
2	117-1269	CFS8112-EL	Sediment, chlorine taste + odor	1
2	117-1270	CFS8720-EL	Sediment, chlorine taste + odor	5
2	117-1271	CFS8112-ELS	Sediment, chlorine taste + odor, and scale inhibitor	1
2	117-1272	CFS8720-ELS	Sediment, chlorine taste + odor, and scale inhibitor	5
3	117-1206	CFS117S	Granulated activated carbon built-in scale inhibition	5



5



6



7



8



9

3M/CUNO IMPACT TECHNOLOGY REPLACEMENT CARTRIDGES

REF No.	FMP No.	CUNO MODEL No.	REDUCTION CLAIMS	MICRON
HI-FLOW BEVERAGE				
4	117-1255	HF40	Cysts, bacteria, chlorine taste + odor	0.2
5	117-1256	HF60	Cysts, bacteria, chlorine taste + odor	0.2
6	117-1257	HF90	Cysts, bacteria, chlorine taste + odor	0.2
HI-FLOW ICE				
4	117-1258	HF40-S	Cysts, bacteria, chlorine taste + odor, scale	0.2
5	117-1259	HF60-S	Cysts, bacteria, chlorine taste + odor, scale	0.2
6	117-1260	HF90-S	Cysts, bacteria, chlorine taste + odor, scale	0.2
HI-FLOW BREW				
7	117-1261	HF10-MS	Cysts, bacteria, chlorine taste + odor, scale	0.5
8	117-1262	HF20-MS	Cysts, bacteria, chlorine taste + odor, scale	0.5
9	117-1263	HF30-MS	Cysts, bacteria, chlorine taste + odor, scale	0.5



WRENCH

No. 117-1207

- For CFS22 filter canisters
- Cuno nos. 68900-32, 68900-33

WATER FILTER CROSS REFERENCE CHART

FMP #	Costguard		Cornelius Part #	Cuno Part #	Nu-Calgon Part #	Puremark Part #	Selecto Part #	Ecolab Part #	Bunn® Part #	Manitowoc Part #	Cuno-Aqua Pure Part #
Model #	Part #										
PREFILTERS											
117-1162	EC110	9534-40 DEV9109-08	COR101 COR105 COR120 COR150	CFS110 CFS111 CFS124 55591-08	NP48S	PFS101 PFS105 PFS120 PFS150	109-0010 109-230 109-232 109-235 109-240	9320-1135	S5-10	K-00069 K-00173	AP110 AP111 AP124
117-1157	EC210	9534-20 9534-26 DEV9109-12	COR201 COR205 COR220 COR250	CFS110-C20 CFS124-C20 55906-01	N/A	PFS201 PFS205 PFS220 PFS250	109-0020	9320-1143	S5-20	N/A	N/A
117-1166	N/A	N/A	N/A	N/A	N/A	N/A	101-230	101-230	N/A	N/A	N/A
GRANULAR CARBON											
117-1183	CGT-10	9108-11 DEV9108-11	N/A	CFS117	N/A	PFS17	101-200	9320-1143	C-10	N/A	AP-117
117-1184	CGT-20	9108-32 DEV9108-32	N/A	CFS017-C20	N/A	PFS27	N/A	N/A	C-20 ED-T2	N/A	N/A
117-1195	CGT-20S	9108-33 DEV9108-33	COR20As	CFS017S-C20	C-0070	PFS27s	N/A	N/A	CP-20 ED-TL2	Triliminator K-00070	N/A
117-1048	N/A	MH2 EV9613-21 EV9613-26	N/A	N/A	N/A	N/A	N/A	QC71	N/A	N/A	N/A
117-1180	N/A	BH2 EV9612-50 EV9612-51	N/A	N/A	N/A	N/A	N/A	QL3	N/A	N/A	N/A
CARBON BLOCK											
117-1185	CG5-10	9108-15 DEV9108-15	COR10B1 COR10B5	N/A	NP48C	PFS10B1 PFS10B5	N/A	9320-1002	N/A	N/A	N/A
117-1187	CG5-10S	9108-17 DEV9108-17	COR10B1s COR10B5s	N/A	NP48PC	PFS10B1s PFS10B5s	N/A	9320-1010	N/A	N/A	N/A
117-1186	CG5-20	9108-25 DEV9108-25	COR20B1 COR20B5	55907-01	N/A	PFS20B1 PFS20B5	N/A	9320-1069	N/A	N/A	N/A
117-1188	CG5-20S	9108-27 DEV9108-27	COR20B1s COR20B5s	N/A	N/A	PFS20B1s PFS20B5s	N/A	9320-1077	N/A	K-00174	N/A
117-1168	N/A	N/A	N/A	N/A	N/A	N/A	101-290 101-390	101-290	N/A	N/A	N/A
117-1169	N/A	N/A	N/A	N/A	N/A	N/A	101-300 101-298	101-300 101-298	N/A	N/A	N/A
SCALE REDUCTION											
117-1191	SR-10	9105-81 DEV9105-81	COR10sIMF	CFS420INF	NP486R	PFS10sIMF	101-260	9320-1150	P12-10	N/A	N/A
SOFTENING											
117-1189	SO-10	9105-41 DEV9105-41	N/A	N/A	N/A	N/A	N/A	9320-1176	WS-10	N/A	N/A

COSTGUARD FILTERS

PREFILTERS

1. **No. 117-1162** For all 10" bowls
 - EC110 cartridge
2. **No. 117-1157** For all 20" bowls
 - EC210 cartridge

ICE MACHINE REPLACEMENT CARTRIDGES

3. **No. 117-1183** Reduces chlorine, tastes, and odors for high flow rate capacities
 - 10" long
 - CGT10 cartridge
4. **No. 117-1184** Reduces chlorine, tastes, and odors for larger machines with very high flow rates
 - 20" long
 - CGT20 cartridge
4. **No. 117-1195** Reduces chlorine, tastes, odors, and scale formations
 - For use with Manitowoc Triliminator equipment
 - CGT20S cartridge
5. **No. 117-1187** Reduces chlorine, tastes, odors, and scale formations
 - 5 micron carbon filtration
 - 10" long
 - CG5-10S cartridge
6. **No. 117-1188** Reduces chlorine, tastes, odors, and scale formations for all 20" bowls
 - 5 micron carbon filtration
 - 20" long
 - CG5-20S cartridge
7. **No. 117-1191** Treats scale, corrosion, and iron
 - 10" long
 - SR10 cartridge

COFFEE AND ESPRESSO RELATED REPLACEMENT CARTRIDGES AND FILTERS

8. **No. 117-1189** 750 grains capacity softener
 - Used in espresso applications
 - SO10 cartridge

COMBINATION SYSTEMS/FOUNTAIN DRINK REPLACEMENT CARTRIDGES

9. **No. 117-1185** Reduces chlorine, tastes, and odors; filters particulate down to 5 microns
 - For all 10" bowls
 - 5 micron carbon cartridge
 - CG5-10
10. **No. 117-1186** Reduces chlorine, tastes, and odors. Filters particulate down to 5 microns
 - For all 20" bowls
 - 5 micron carbon cartridge
 - CG5-20

REPLACEMENT PARTS AND TOOLS

11. **No. 117-1194** Pressure gauge
 - No. 117-1192** O-ring, 3½" OD (not shown)
 - Fits 10" and 20" slimline bowls
 - No. 117-1193** Wrench (not shown)
 - Fits 10" and 20" slimline bowls



1



2



3



4



5, 9



6, 10



7



8



11

EVERPURE® WATER FILTERS

INSURICE® FILTRATION SYSTEMS AND CARTRIDGES FOR ICE MACHINES



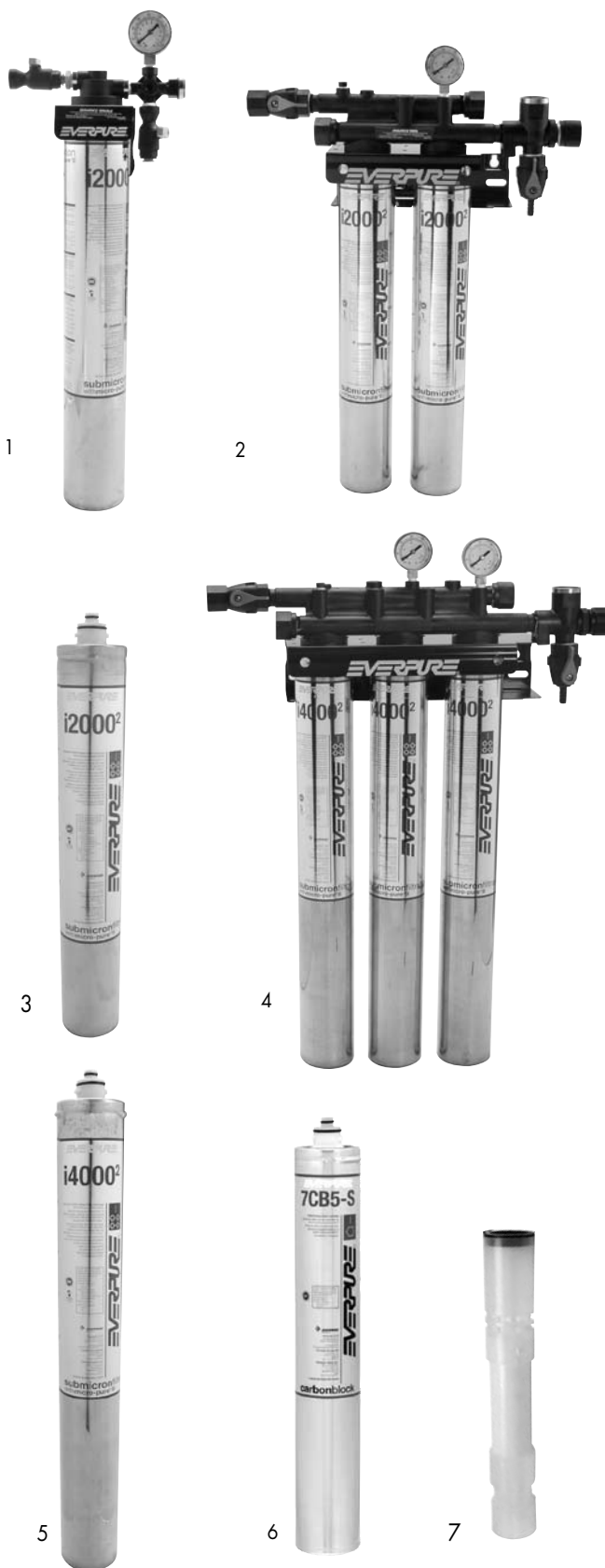
- Pressure gauges display 0–125 PSI
 - NSF listed for class 1 taste, odor, chlorine, submicron particulate, and cyst reduction
- No. 117-1198** InsurIce single filter system–I2000²
 - Filters up to 750 lb/day for most cubers and 1500 lb/day for most flakers
 - Includes cartridge head with water pressure gauge, I2000² filter cartridge (No. 117-1159), red plastic flush tubing
 - Everpure no. EV9324-01
 - No. 117-1199** InsurIce twin filter system–I2000²
 - Filters up to 1450 lb/day for most cubers and 2200 lb/day for most flakers
 - Includes twin cartridge head with water pressure gauge, 2 antimicrobial-treated I2000² filter cartridges (No. 117-1159), clear plastic flush tubing
 - Everpure no. EV9324-02
 - No. 117-1159** InsurIce I2000² cartridge
 - For single and twin ice machine filtration systems
 - Cartridge features antimicrobial treatment
 - Everpure nos. EV9612-21, EV9612-22
 - No. 117-1218** Triple filter system–I4000²
 - For high volume, high capacity ice machines
 - Includes triple cartridge head with inlet and outlet water pressure gauges, 3 antimicrobial-treated I4000² filter cartridges (No. 117-1160), clear PVC tubing, black plastic coupling, and tubing connector
 - Everpure no. EV9325-03
 - No. 117-1160** InsurIce I4000² cartridge
 - For triple and quad ice machine filtration systems
 - Cartridge features antimicrobial treatment
 - Everpure nos. EV9612-31, EV9612-32

REPLACEMENT CARTRIDGE

- No. 117-1179** 7CB5-S cartridge
 - For high turbidity or low flow water pressure
 - Everpure no. EV9618-21

SCALE STICKS™

- No. 117-1226** Scale Stick™, SS-IMF
 - Scale inhibitor
 - Fits old style IMF Housings
 - For 8" housing
 - Everpure no. EV9799-32
- No. 117-1203** Scale Stick™, SS-10
 - Scale inhibitor
 - For 10" housing
 - Everpure no. EV9799-02



EVERPURE® WATER FILTERS

KLEENSTEAM® AR-X FILTRATION SYSTEM CARTRIDGES FOR STEAMERS

1. **No. 117-1213** AR-X pre-filter housing
 - Used with Kleensteam AR-X system pre-filter cartridges
 - Includes O-ring (No. 117-1214)
 - Clear plastic
 - Everpure no. EV3070-19
- **No. 117-1214** Replacement O-ring (not shown)
 - Everpure no. EV3071-19
2. **No. 117-1203** Scale Stick™, SS-10
 - Replaces AR10 cartridge and is longer lasting
 - For 10" housing
 - Everpure no. EV9799-02
3. **No. 117-1209** A-10 pre-filter housing
 - Used with scale stick (No. 117-1203) and any other 10" filters
 - Clear plastic
 - Includes mounting bracket, screws, and O-ring
 - Everpure no. EV9100-01
4. **No. 117-1202** 7CB5 cartridge
 - Carbon block filter
 - 5 micron filter for taste and odor control
 - Everpure no. EV9618-11



COUNTERTOP KLEENSTEAM® CT SYSTEM

Provides high quality water and deliming capabilities. Carbon technology provides dirt, chlorine, taste, odor, and micron particulate reduction.

5. **No. 117-1248** Kleensteam® CT System
 - For use with countertop steamers
 - Includes 4CB5 carbon block cartridge (No. 117-1247), housing (No. 117-1213), Scale Stick™ (No. 117-1203), and 2 ScaleKleen® Scale Remover packets (No. 117-1197)
 - Everpure no. EV9797-50
6. **No. 117-1247** 4CB5 carbon block cartridge
 - For medium flow water pressure areas and low volume applications
 - 6000 gal (23000l) capacity
 - Everpure no. EV9617-11



KLEENSTEAM® II CARTRIDGE SYSTEM FOR STEAMERS

7. **No. 117-1250** Kleensteam® II System
 - Can accommodate a second filter cartridge for increased capacity
 - 3/4" NPT inlet and outlet
 - Includes:
 - 7CB5 filter cartridge (No. 117-1202)
 - Scale Stick SS-10 (No. 117-1203)
 - 2 packets 2.2 lb ScaleKleen (No. 117-1196)
 - Pressure gauge
 - SR-X scale reduction feeder housing
 - Dip tube for ScaleKleen delimer feed
 - Cartridge plug for second filter head
 - Bowl wrench (No. 117-1170)
 - Instructions and hardware
 - Everpure nos. 979721, EV9797-21, EV9797-21A



EVERPURE® WATER FILTERS

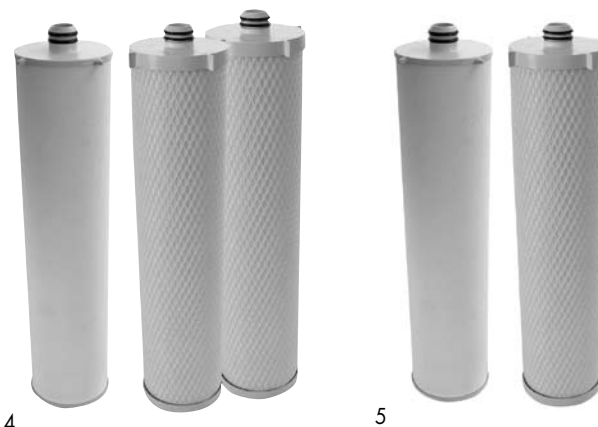
FOUNTAIN/COMBINATION FILTER SYSTEM AND REPLACEMENT CARTRIDGES

1. **No. 117-1244** CB20-124E fountain/combo system with cartridge
 - For high flow, high volume foodservice applications requiring chloramine reduction
 - Includes 1 CC1E cartridge (No. 117-1245), service wrench, and mounting screws
 - 0-100 PSI outlet pressure gauge
 - Everpure nos. EV9100-51, CB20-124E
2. **No. 117-1245** CC1E cartridge
 - 20,000 gallon capacity
 - Includes bowl O-ring
 - Everpure nos. EV9105-02, CC1E



CARTRIDGE FOUNTAIN SYSTEM AND REPLACEMENT CARTRIDGES

3. **No. 117-1219** Triple filter system—CB20-312E
 - For high flow, high volume fountain applications requiring chloramine reduction
 - Includes 1 CC1E and 2 CC3E cartridges (No. 117-1220), PVC drain tubing, cartridge housing wrench, 2-way water valve, fittings, and hardware
 - Everpure no. EV9100-37
4. **No. 117-1220** CB20-312E triple cartridge kit
 - Kit consists of 1 CC1E cartridge and 2 CC3E cartridges
 - Everpure no. EV9105-34
5. **No. 117-1221** CB20-302E dual cartridge kit
 - Kit consists of 1 CC1E cartridge, and 1 CC3E cartridge
 - Everpure no. EV9105-21

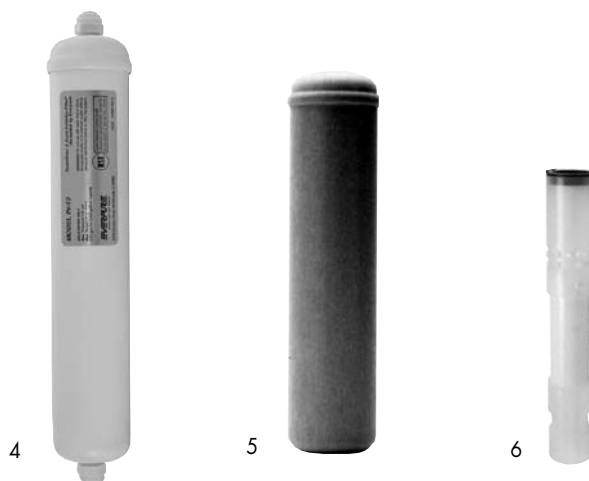
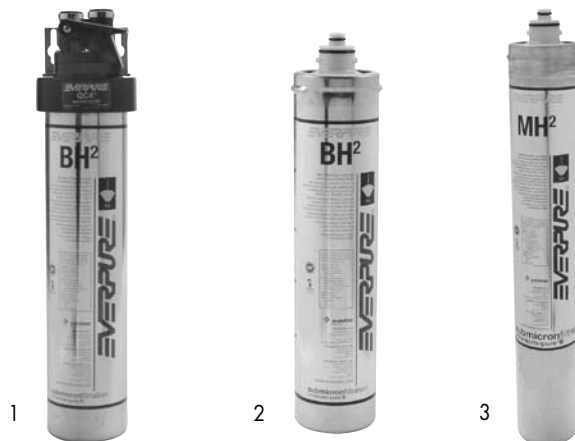


EVERPURE® WATER FILTERS

COFFEE-RELATED FILTER SYSTEM AND REPLACEMENT CARTRIDGES

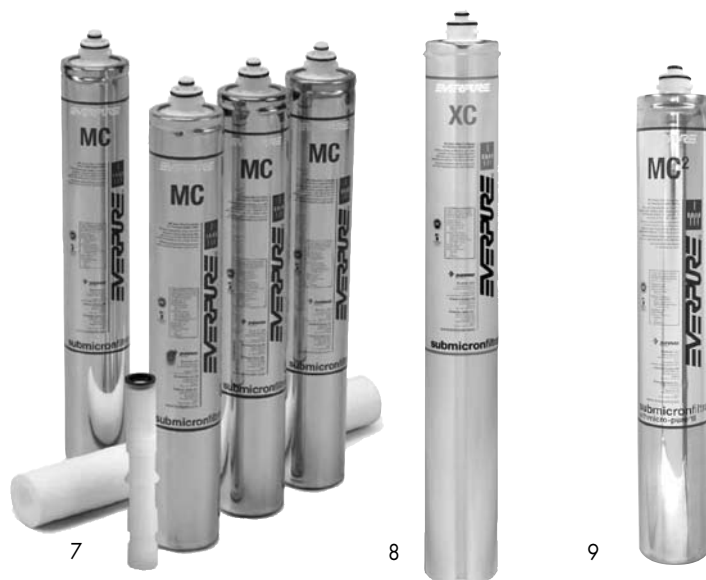
- NSF listed for class 1 taste, odor, chlorine, submicron particulate, and cyst reduction

- No. 117-1223** QL3-BH system
 - For low flow, medium volume coffee brewers
 - Includes 1 BH² cartridge (No. 117-1180), QL3 cartridge head with water shut-off valve, fittings, and hardware
 - Everpure no. EV9272-00
- No. 117-1180** BH² cartridge
 - 3000 gallon capacity
 - AglON™ antimicrobial protection
 - Everpure nos. EV9612-00, EV9612-50
- No. 117-1048** MH² cartridge
 - 9000 gallon capacity
 - AglON™ antimicrobial protection
 - Everpure nos. EV9613-01, EV9613-21
- No. 117-1225** IN-10 in-line scale reduction filter
 - 2400 gallon capacity
 - Includes 1/4" tubing inlet and outlet fittings
 - Everpure no. EV9100-06
- No. 117-1181** IN-12 in-line scale reduction filter
 - 4800 gallon capacity
 - 1/4" female NPT
 - Everpure no. EV9100-07
- No. 117-1226** Scale Stick™, SS-IMF
 - Fits old style IMF housings
 - For 8" housing
 - Everpure no. EV9799-32
- No. 117-1203** Scale Stick™, SS-10
 - For 10" housing
 - Everpure no. EV9799-02



COMBINATION SYSTEM REPLACEMENT CARTRIDGES

- No. 117-1226** Scale Stick™, SS-IMF
 - Fits old style IMF housings
 - For 8" housing
 - Everpure no. EV9799-32
- No. 117-1203** Scale Stick™, SS-10
 - For 10" housing
 - Everpure no. EV9799-02
- No. 117-1232** Quad-MC cartridge kit
 - For CSR Quad-MC system
 - Includes 4 MC filter cartridges (No. 117-1047), 1 EC210 prefilter cartridge (No. 117-1157), 1 Scale Stick SS-IMF (No. 117-1226) with spacer, and 1 O-ring
 - Everpure no. EV9628-08
- No. 117-1227** XC cartridge
 - For fountain beverage and combination filtration systems
 - 33% more capacity than the MC cartridge
 - 12,000 gallon capacity
 - Everpure no. EV9613-09
- No. 117-1047** MC² cartridge
 - For fountain beverage and combination systems; helps retain the carbonation in fountain drinks
 - 9000 gallon capacity
 - Inhibits bacterial growth with Micro-Pure II/AgION™ antimicrobial protection
 - Everpure nos. EV9612-06, EV9612-55, EV9612-56



EVERPURE® WATER FILTERS

DRINKING FOUNTAIN REPLACEMENT CARTRIDGES

1. **No. 117-1182** OW200L cartridge
 - For lead removal and scale retardation
 - Everpure no. EV9619-01
2. **No. 117-1047** MC²
 - For fountain beverage and combination systems; helps retain the carbonation in fountain drinks
 - Inhibits bacterial growth with Micro-Pure II/AglON™ antimicrobial protection
 - Everpure nos. EV912-06, EV9612-55, EV9612-56

COARSE PREFILTER SYSTEM AND REPLACEMENT CARTRIDGES

3. **No. 117-1224** E-Series, 20" System
 - For fountain beverage systems, ice makers, and combination systems
 - Filters large dirt and rust particles extending carbon filter life
 - Includes 1 EC210 cartridge, 1 cartridge wrench, 1 O-ring, a cartridge head, and housings
 - Everpure no. EV9795-90
4. **No. 117-1157** EC210 cartridge
 - For all 20" bowls
5. **No. 117-1162** EC110 cartridge
 - For all 10" bowls

DIRTY WATER FILTRATION REPLACEMENT CARTRIDGE

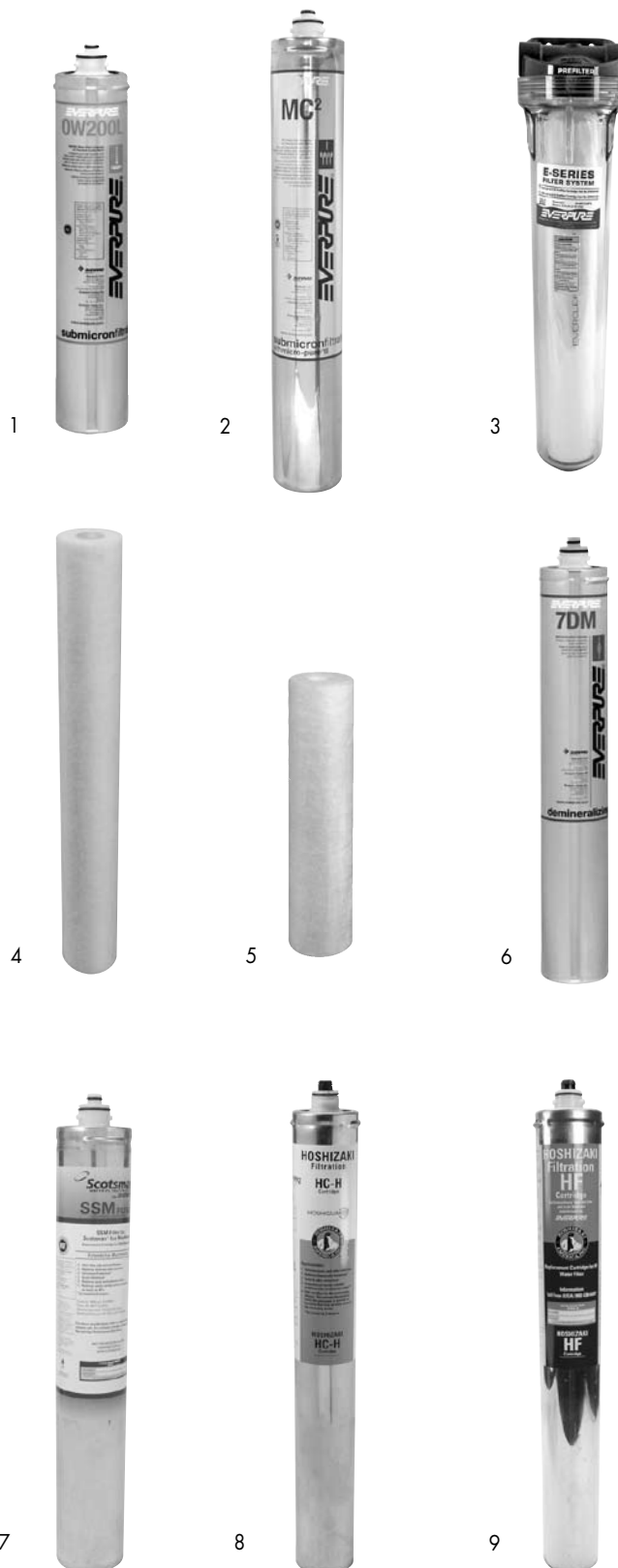
6. **No. 117-1201** DM cartridge
 - For high mineral content and low water volume
 - Everpure no. EV9607-01

SCOTSMAN® WATER FILTRATION SYSTEM CARTRIDGE

7. **No. 117-1236** SSM cartridge
 - For Scotsman® ice machines
 - Class 1 ultra-fine submicron filtration
 - Provides scale inhibition and corrosion protection
 - Everpure no. EV9624-16

HOSHIZAKI® FILTRATION SYSTEM CARTRIDGES

- For Hoshizaki ice machines
 - Reduce lime scale formation and corrosion due to chlorine vapor
8. **No. 117-1237** HC-H cartridge
 - For coarse particle filtration
 - Everpure nos. EV9655-07, EV9655-08
 9. **No. 117-1238** HF cartridge
 - For fine particle filtration
 - Everpure no. EV9656-06



EVERPURE® WATER FILTERS

DISPOSABLE PRECOAT FILTER REPLACEMENT CARTRIDGE

1. **No. 117-1229** 959-PM cartridge
 - Fits all T9 series filters
 - Bayonet style inlet fitting
 - Everpure no. EV9630-01

HIGH TEMPERATURE SCALE CONTROL SYSTEM

2. **No. 117-1216** Kleenware System—HTS-11
 - For use in high temperature applications like dish machines and booster heaters
 - 200°F (93°C) maximum water temperature inlet
 - Includes mounting bracket, screws, housing, HydroBlend® cartridge, service wrench
 - Everpure no. EV9799-10 and EV9799-11

PREFILTER HOUSING

3. **No. 117-1231** For old style K series prefilters
 - Includes O-ring
 - Clear plastic
 - Everpure no. EV3070-18

GASKET

4. **No. 117-1230** For T-9 series 20" bowls
 - 8" (203mm) ID, 8½" (216mm) OD
 - Square cut gray rubber
 - Everpure no. EV0944-00

SCALE KLEEN™ SCALE REMOVERS

- For all coffee, steam, and ware washing equipment
- Food grade crystals

5. **No. 143-1091** 1¾ oz
 - Everpure nos. EV9796-50, EV979831
5. **No. 117-1197** 7 oz
 - Everpure no. EV9798-20
5. **No. 117-1196** 2½ lb
 - Everpure nos. EV9798-01, EV9798-35



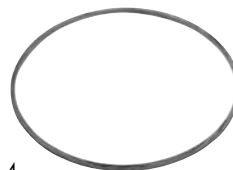
1



2



3



4



5



Y-TYPE IN-LINE STRAINER

No. 117-1123

- ½" NPT PVC strainer with plug
- Rated 200 PSI for water
- #100 screen mesh



IN-LINE STRAINER

No. 190-1031

- Commonly used on coffee equipment
- Can be taken apart for cleaning
- ¼" flare

SELECTO SCIENTIFIC WATER FILTERS

WATER FILTER SYSTEM



1. **No. 117-1273** SMFIC620-2 Complete System (formerly IC10/620-2 and MF620CC)
 - For fountain beverage machines
 - Reduces chlorine, chloramines, sediment, bad tastes and odors, THM, organics, and tannins
 - 200,000 gallon capacity
 - 10 GPM flow rate
 - 0-160 PSI outlet pressure gauge
 - Includes inlet shut-off valve, 1/2" inlet and outlet hose barbs, 4 O-rings, 2 tubes of O-ring lubricant, and 2 connectors
 - Selecto Scientific no. 80-6202
2. **No. 117-1166** MF5/600 prefilter cartridge
 - 5 micron
 - 9 3/4" long
 - Selecto Scientific no. 101-230
3. **No. 117-1274** SMFIC620-2 replacement cartridge
 - Includes O-ring and O-ring lubricant
 - Sold by the pair
 - Selecto Scientific no. 108-0202



2

POLYCARBON FILTER CARTRIDGES

4. **No. 117-1168** 10" long
 - For newer style MF5/600, MF600, and MF600C
 - Selecto Scientific no. 101-290
5. **No. 117-1169** 20" long
 - For newer style MF5/620 and MF620
 - Selecto Scientific nos. 101-298, 101-300



3



4



5

SCALE FILTER CARTRIDGE

6. **No. 117-1167** For model MF5/620-5
 - Replacement scale inhibiting cartridge
 - Includes O-ring and O-ring lubricant
 - Selecto Scientific no. 101-260

REPLACEMENT FILTER KITS

7. **No. 117-1234** For model IC10/620-2 (formerly MF620CC)
 - Reduces chlorine, chloramines, lead, bad tastes and odors; removes cysts
 - Includes two 101-300 filters, 101-231P filter, 3 O-rings, and 3 tubes of O-ring lubricant
 - 20" long
 - Selecto Scientific nos. 109-0027C, 109-0050
8. **No. 117-1249** For model IC10/620 (formerly MF620C)
 - Includes 1 prefilter, 1 sediment pre-filter cartridge, 4 filter O-rings, O-ring lubricant, and identification stickers
 - Selecto Scientific nos. 109-0040, 109-0028C



6



7



8



WRENCHES

9. **No. 117-1170** Black
 - For older style black and clear filter housings
 - Selecto Scientific no. 700-300
10. **No. 117-1171** White
 - For newer style white filter housings
 - Selecto Scientific no. 700-301



9



10